

19-17W

COUNTY SURVEYORS FILE DATA
NOT REMOVE FROM OFFICE

FILED
RECEIVED

MAY 26 1971

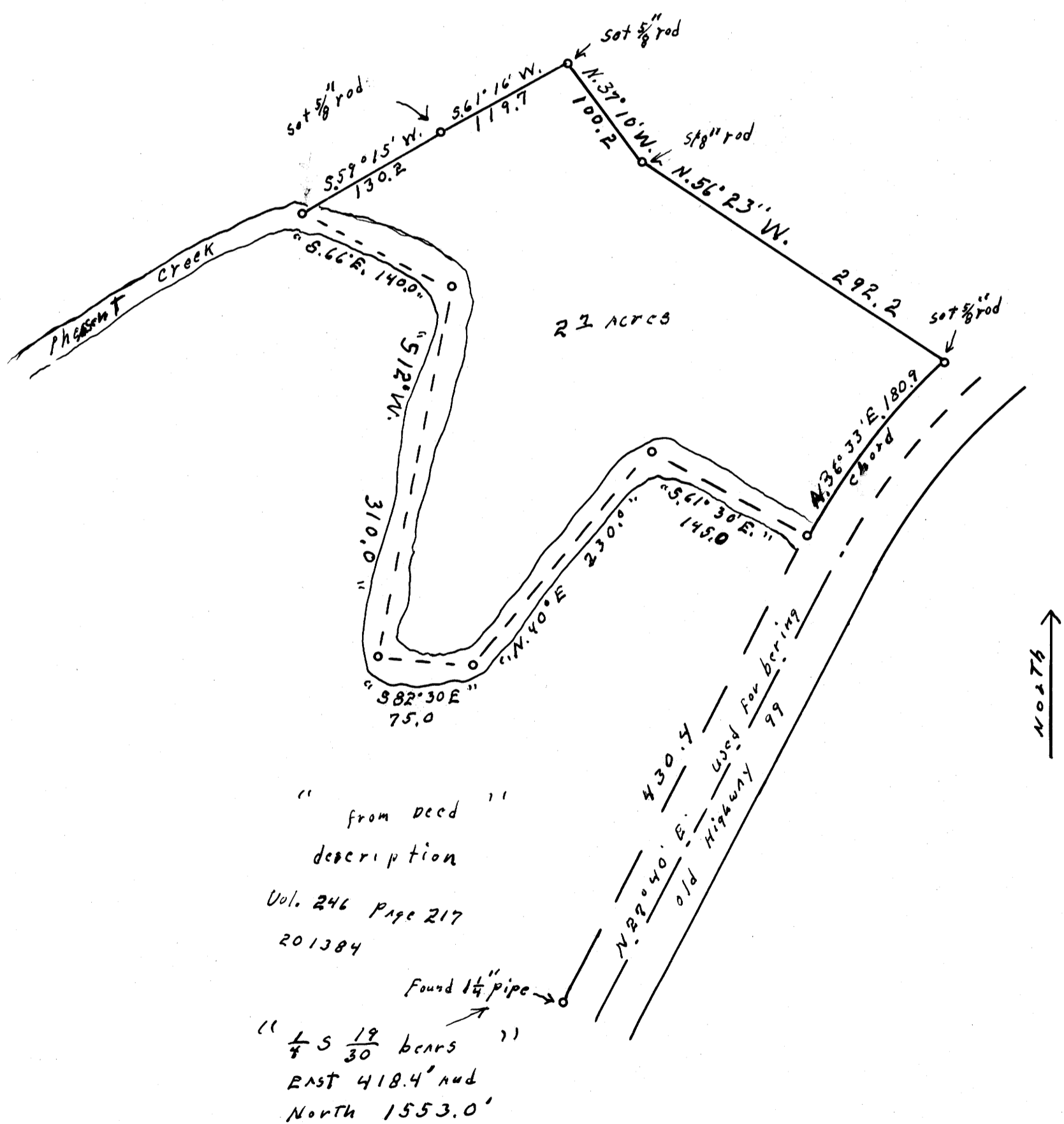
COUNTY SURVEYOR
DOUGLAS COUNTY, ORE.

SECT 30, T.21S., R. 4 W., W. M.

Floyd D + Lucille Z McMichael

MAY 21, 1970

Scale 1" = 100'



REGISTERED
OREGON
LAND SURVEYOR

Wilford N. Haines

MAY 7, 1948
WILFORD N. HAINES
239