

SURVEY FOR DESCRIPTION IN GEO. T. DAY D.L.C. #47 IN SECTION 9, T.30 S., R.4 W.,  
 W.M.,

MAY, 1971

DOUGLAS CO., OREGON

SCALE 1" = 50'

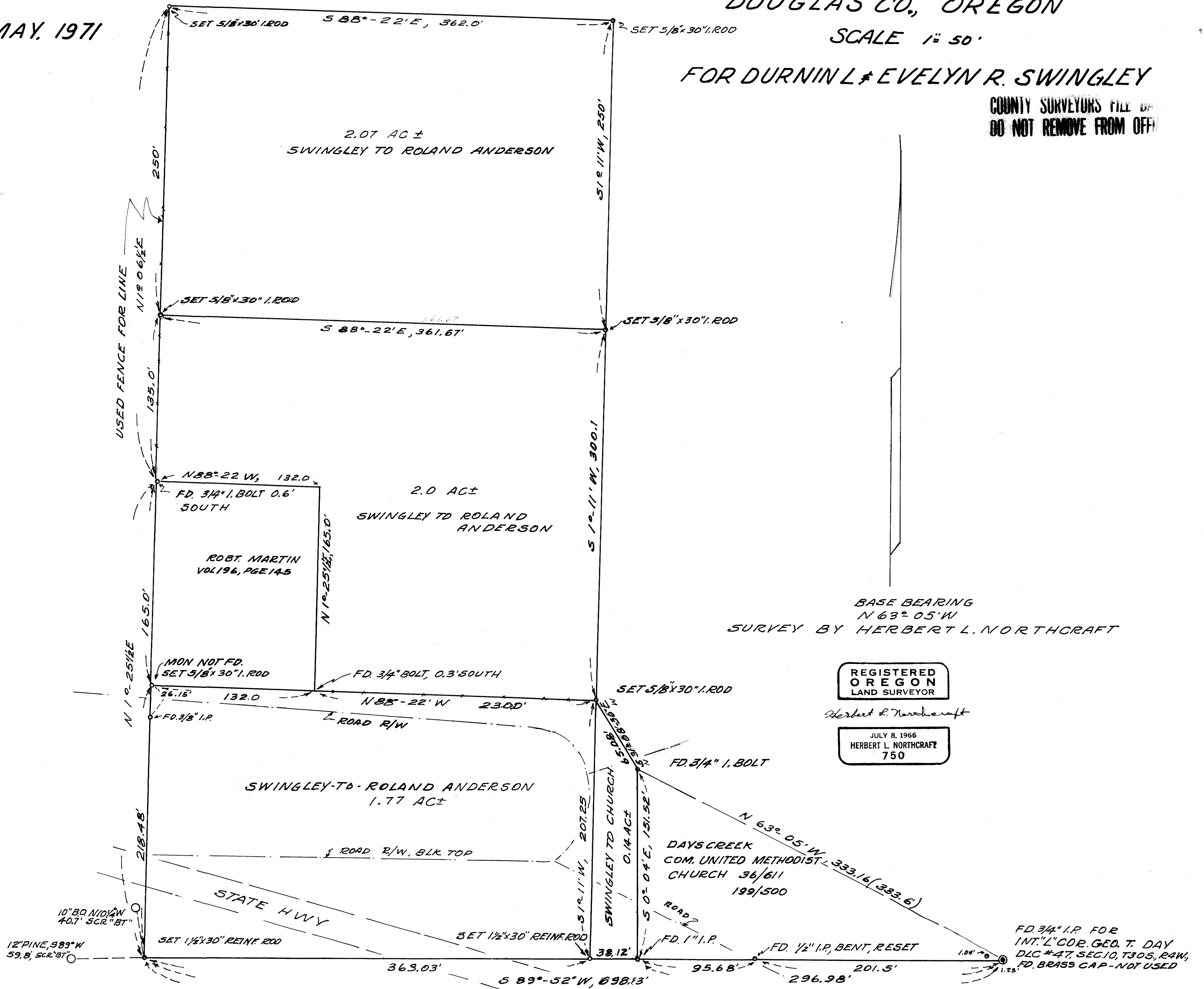
FOR DURMIN L & EVELYN R. SWINGLEY

COUNTY SURVEYORS FILE OR  
 DO NOT REMOVE FROM OFFICE

FILED  
 RECEIVED

MAY 21 1971

COUNTY SURVEYOR  
 DOUGLAS COUNTY, ORE.



M 41-60

M 41-60