

SURVEYED TO ESTABLISH BLOCK NO. 19

KINNEY'S IMPROVED PLAT

FOR JAMES & STREITZKE CONST. CO. DEC. 1970

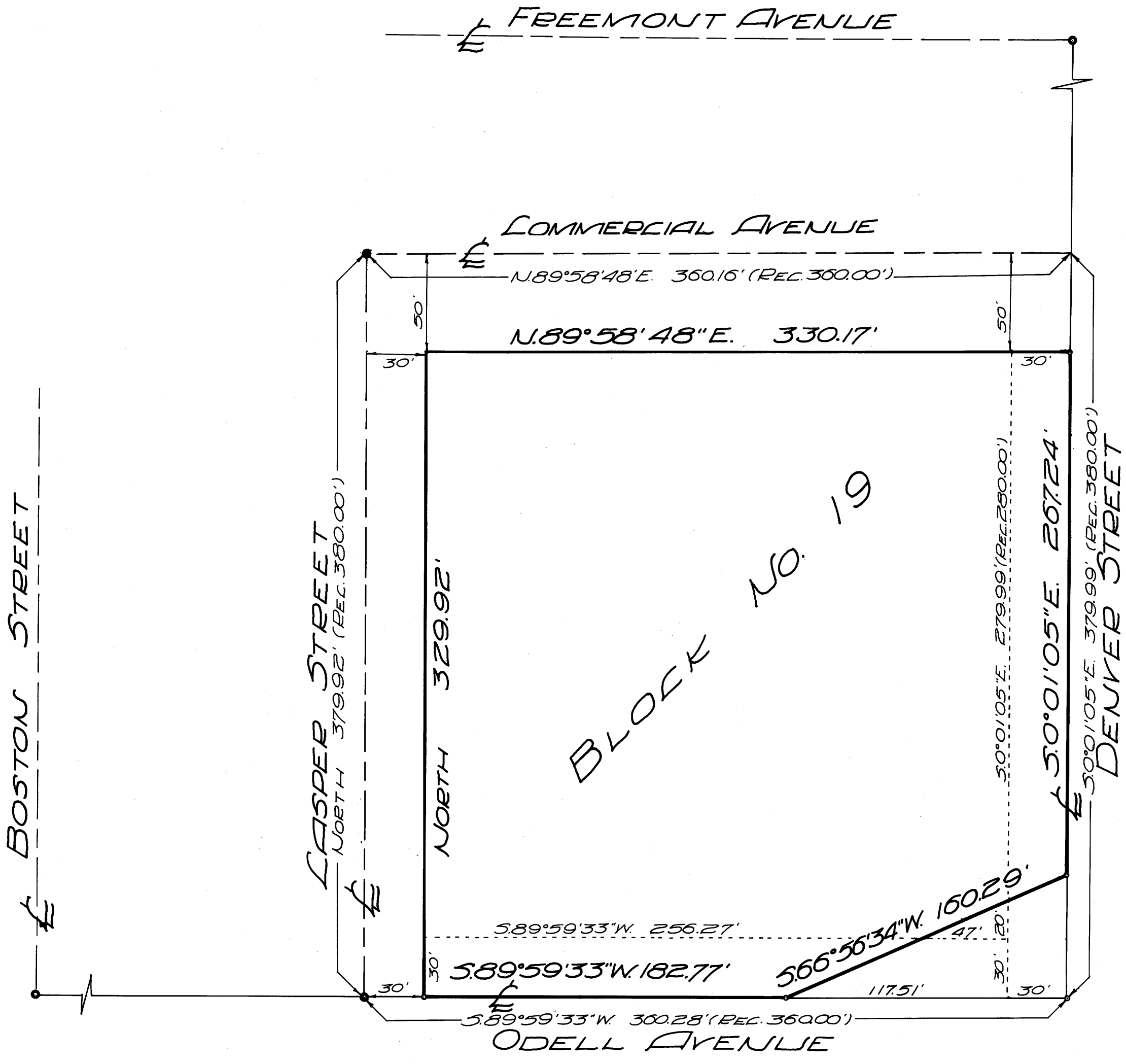
BY BAUGHMAN & ACKARET INC.

SCALE 1"=50'

COUNTY SURVEYORS FILE DATA
DO NOT REMOVE FROM OFFICE

FILED
RECEIVED
JAN 19 1971
COUNTY SURVEYOR
DOUGLAS COUNTY, ORE.

REGISTERED
OREGON
LAND SURVEYOR
Glenn S. Baughman
JULY 14, 1961
GLENN S. BAUGHMAN
536



BASE BEARING KINNEY'S IMPROVED PLAT

- SCALE 1"=50'
- SET 5/8" IRON ROD
 - FOUND $\frac{1}{2}$ STREET MONUMENT