

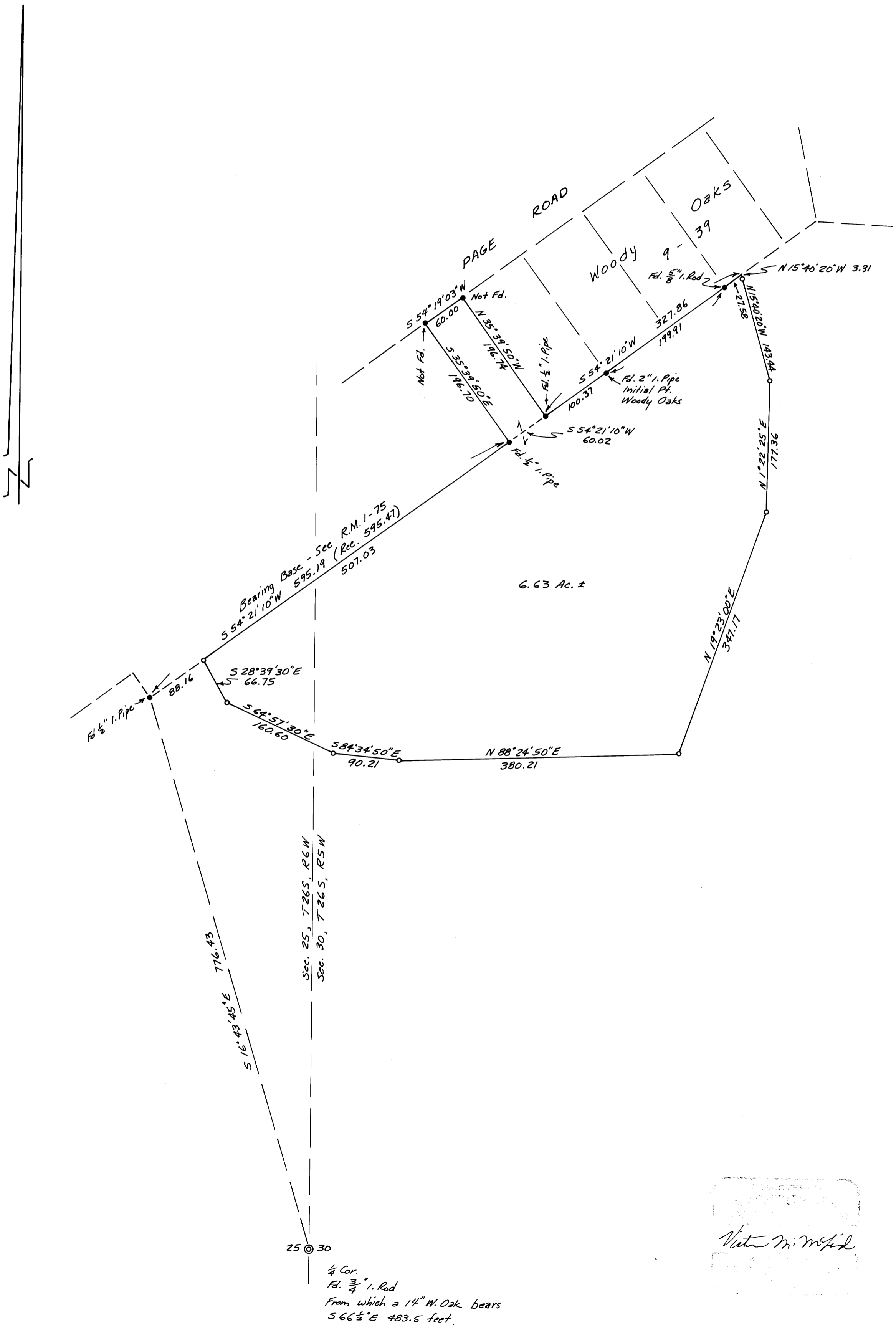
NOT REMOVE FROM OFFICE

SL
77

SURVEY IN THE NE 1/4 OF SEC. 25, T26S, R6W, AND THE NW 1/4 OF SEC. 30, T26S, R5W, W.M.
Surveyed For Pete Leiken by Victor M. McLind
May 1971

Scale : 1" = 100'

- o Set 5/8" I. Rod
- Monument Found Unless otherwise noted



Victor M. McLind