

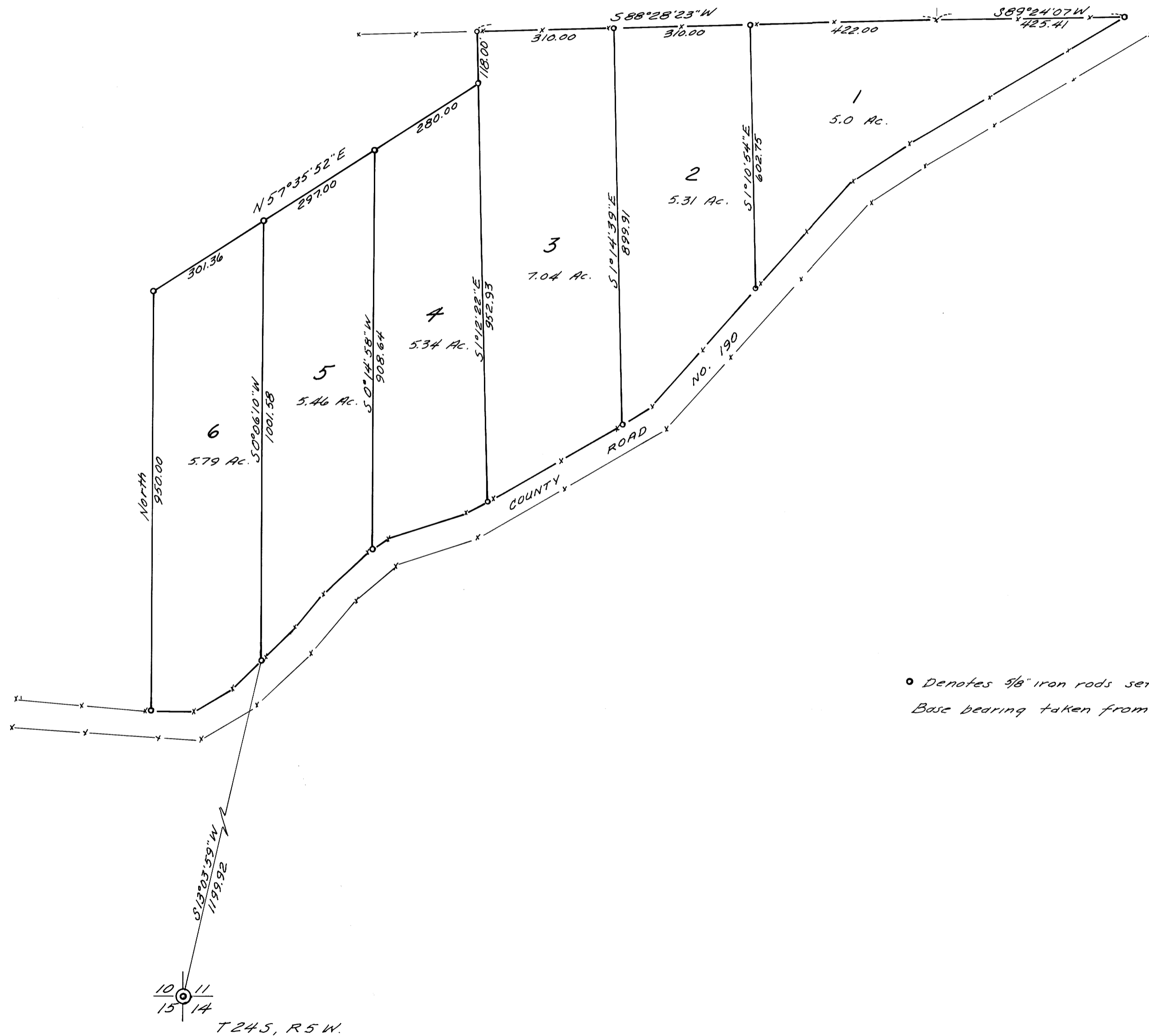
COUNTY SURVEYORS FILE DATA
DO NOT REMOVE FROM OFFICE

SURVEY IN SEC. 11, T24 S, R 5 W. W. M.
DOUGLAS COUNTY, ORE.
SURVEYED FOR - AL SHAW
SURVEYED BY - W. S. BARNES
APRIL 1971
SCALE 1" = 200'

Handwritten initials

M 41 - 50

Claude Green et al.
Instr. No. 68-4977



• Denotes $\frac{3}{8}$ " iron rods set.
Base bearing taken from Mag. North Var. 20°.



M 41 - 50