

COUNTY SURVEYORS FILE DATA
DO NOT REMOVE FROM OFFICE

FILED
RECEIVED

APR 29 1971

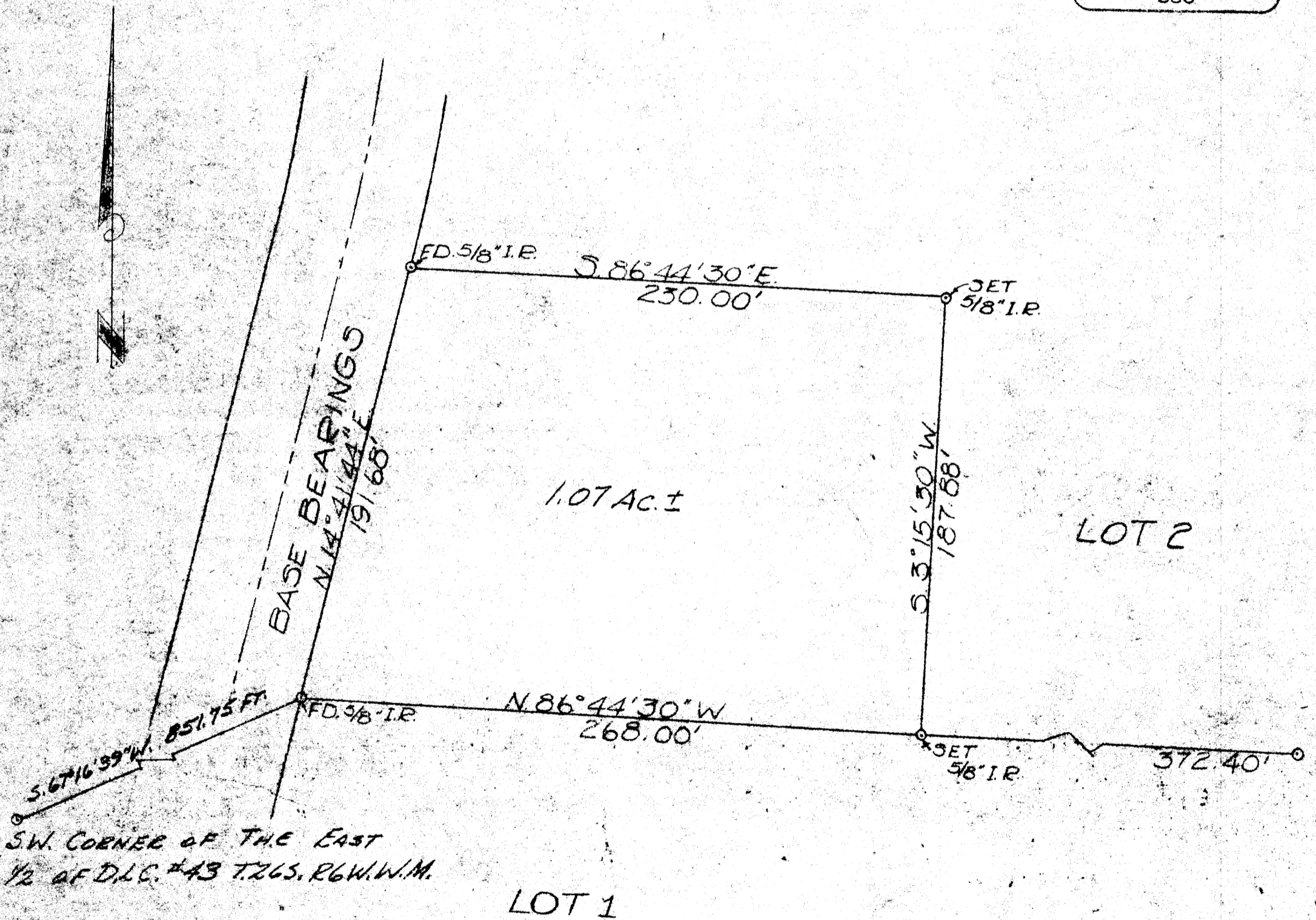
COUNTY SURVEYOR
SOUWAS COUNTY

SURVEYED FOR DEED DESCRIPTION
FOR ELVIN WOODS
BY BAUGHMAN SURVEYING
A PART OF PARCEL #2 COUNTRY HILLS
SECTION 27, T. 26S. R. 6W. W.M.
SCALE 1" = 50' MARCH 1971

REGISTERED
OREGON
LAND SURVEYOR

Glenn S. Baughman

JULY 14, 1961
GLENN S. BAUGHMAN
536



NORTH ARROW ADDED
REV 10-19-72 FAB

MAP FILE M 41-47