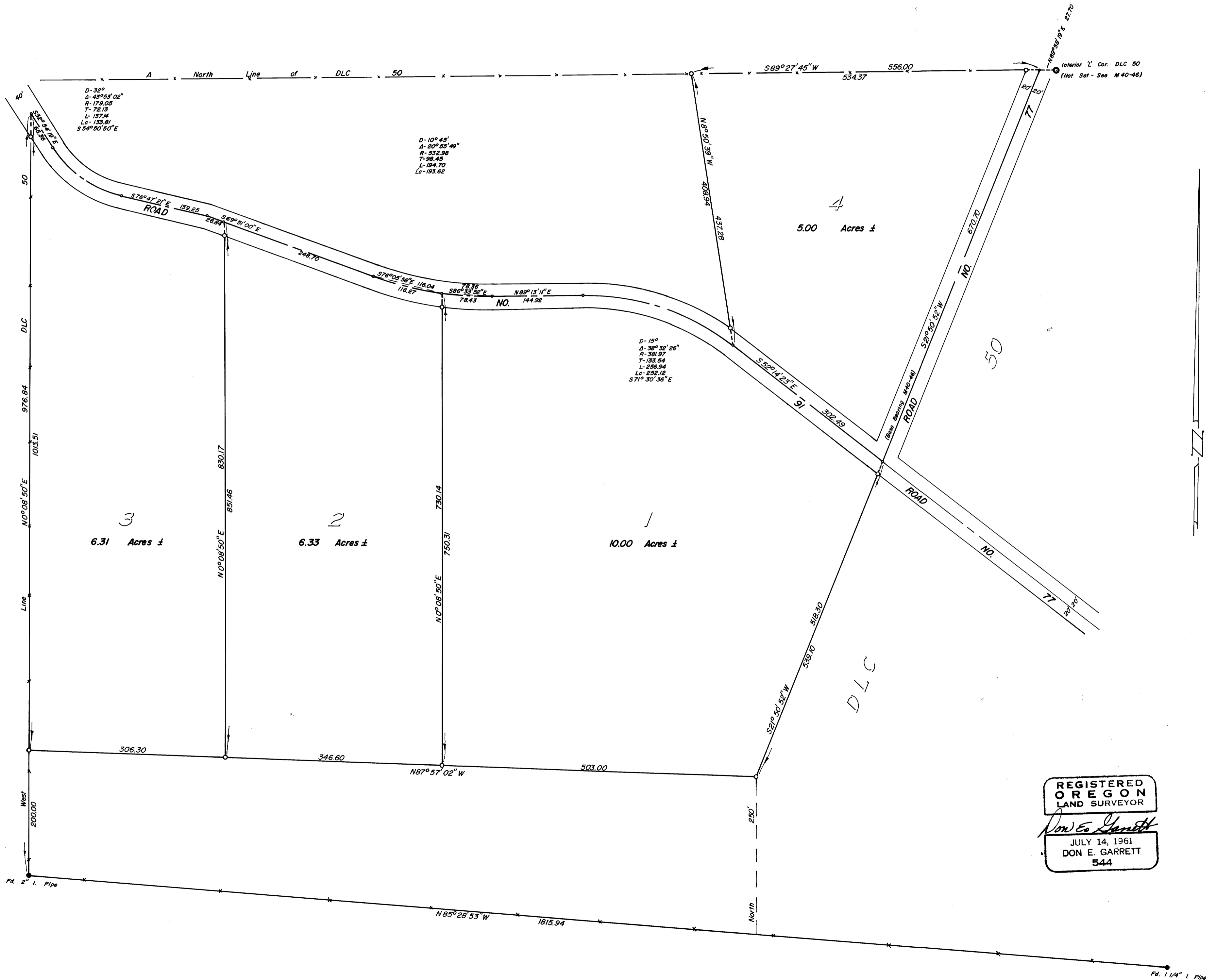


SURVEY IN SECTION 15, DLC 50, TOWNSHIP 25 SOUTH, RANGE 6 WEST, WILLAMETTE MERIDIAN
Surveyed for Earl Stonerod by Don E. Garrett
April 1971
 o-Set 5/8" I. Rod

COUNTY SURVEYORS FILE DATA
DO NOT REMOVE FROM OFFICE

Scale 1" = 100'

FILED
 RECEIVED
 JUN 9 1971
 COUNTY SURVEYOR
 DOUGLAS COUNTY, OREGON



M 41-38