

COUNTY SURVEYORS FILE DATA
DO NOT REMOVE FROM OFFICE

SURVEY IN SECTION 18, TOWNSHIP 29 SOUTH, RANGE 4 WEST, WILLAMETTE MERIDIAN
Surveyed for Orval Weaver by Don E. Garrett
March 1971

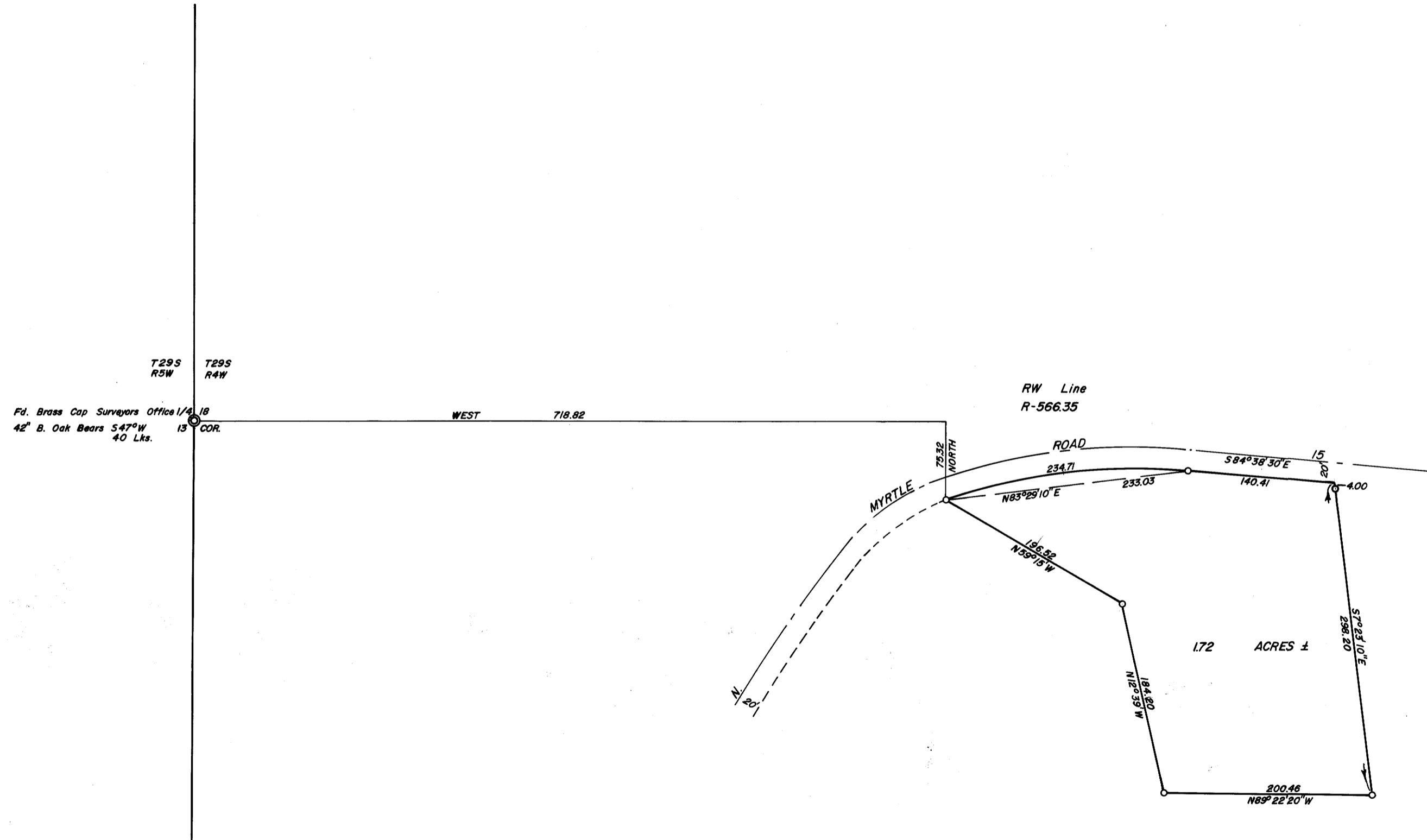
o - Set 5/8" I. Rod
Bearings are based on a Solar Observation taken March 19, 1971.

Scale 1" = 100'

FILED *LG*
RECEIVED

MAR 25 1971

COUNTY SURVEYOR
DOUGLAS COUNTY, ORE.



REGISTERED
OREGON
LAND SURVEYOR
Don E. Garrett
JULY 14, 1961
DON E. GARRETT
544

17-36

17-36