

COUNTY SURVEYORS FILE DATA  
DO NOT REMOVE FROM OFFICE

FILED  
RECEIVED

MAR 26 1971

COUNTY SURVEYOR  
DOUGLAS COUNTY, OREGON

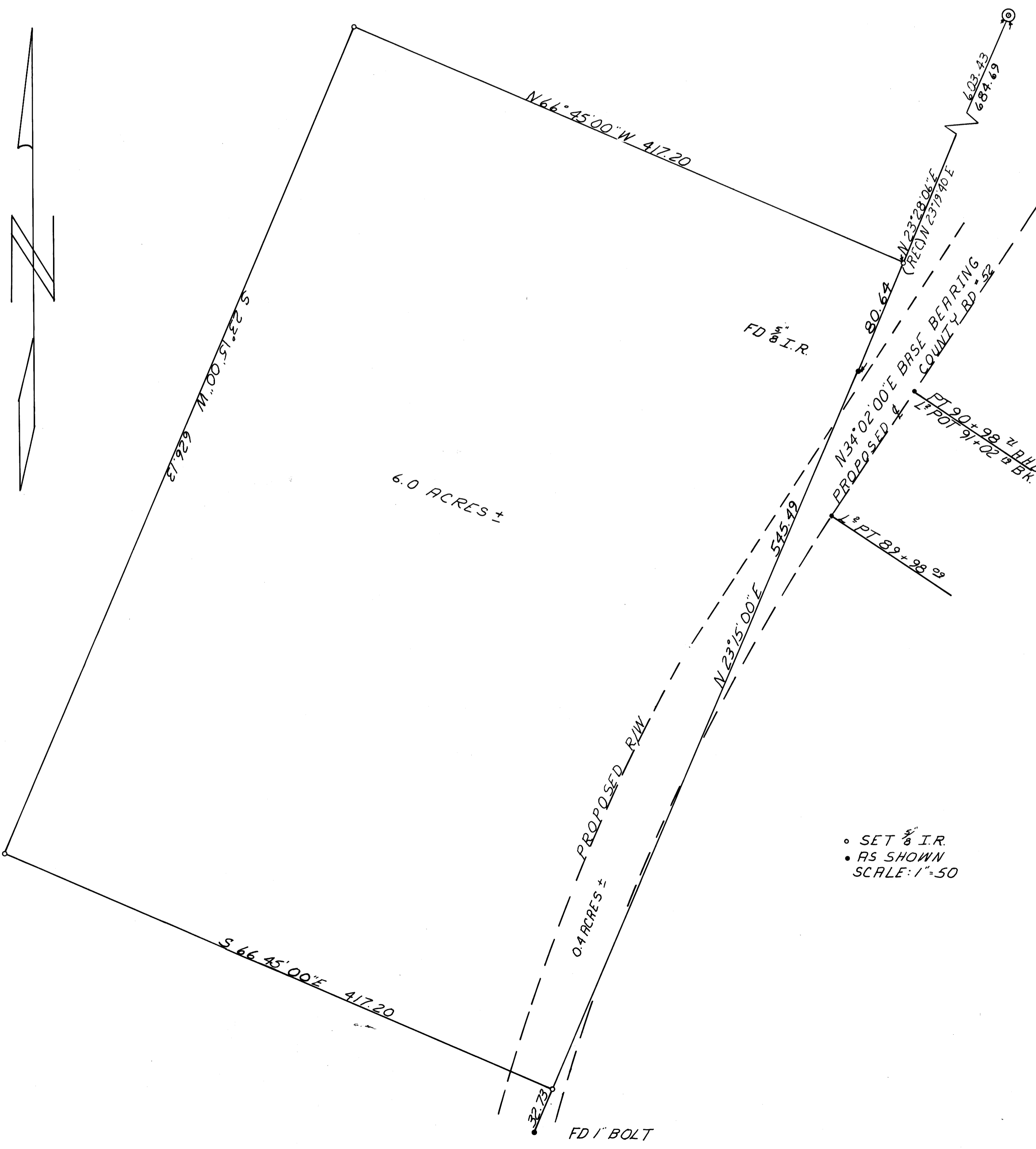
SURVEYED FOR DEED DESCRIPTION  
SITUATED IN NE 1/4 NE 1/4 SEC 26 T27S R7W  
SURVEYED FOR DOUG MATTHEWS  
SURVEYED BY BAUGHMAN SURVEYING  
JANUARY 1971

REGISTERED  
OREGON  
LAND SURVEYOR

*Glenn S. Baughman*

JULY 14, 1961  
GLENN S. BAUGHMAN  
536

FOUND BRASS CAP  
COMMON TO SECS.  
23/24/25/26 T27S R7W  
FOUND BEARING TREES  
7" OAK N82°E 9'  
15" OAK N6°W 34'  
7" OAK S40°W 22'



• SET 5/8\" I.R.  
• AS SHOWN  
SCALE: 1" = 50'