

COUNTY SURVEYORS FILE DATA
DO NOT REMOVE FROM OFFICE

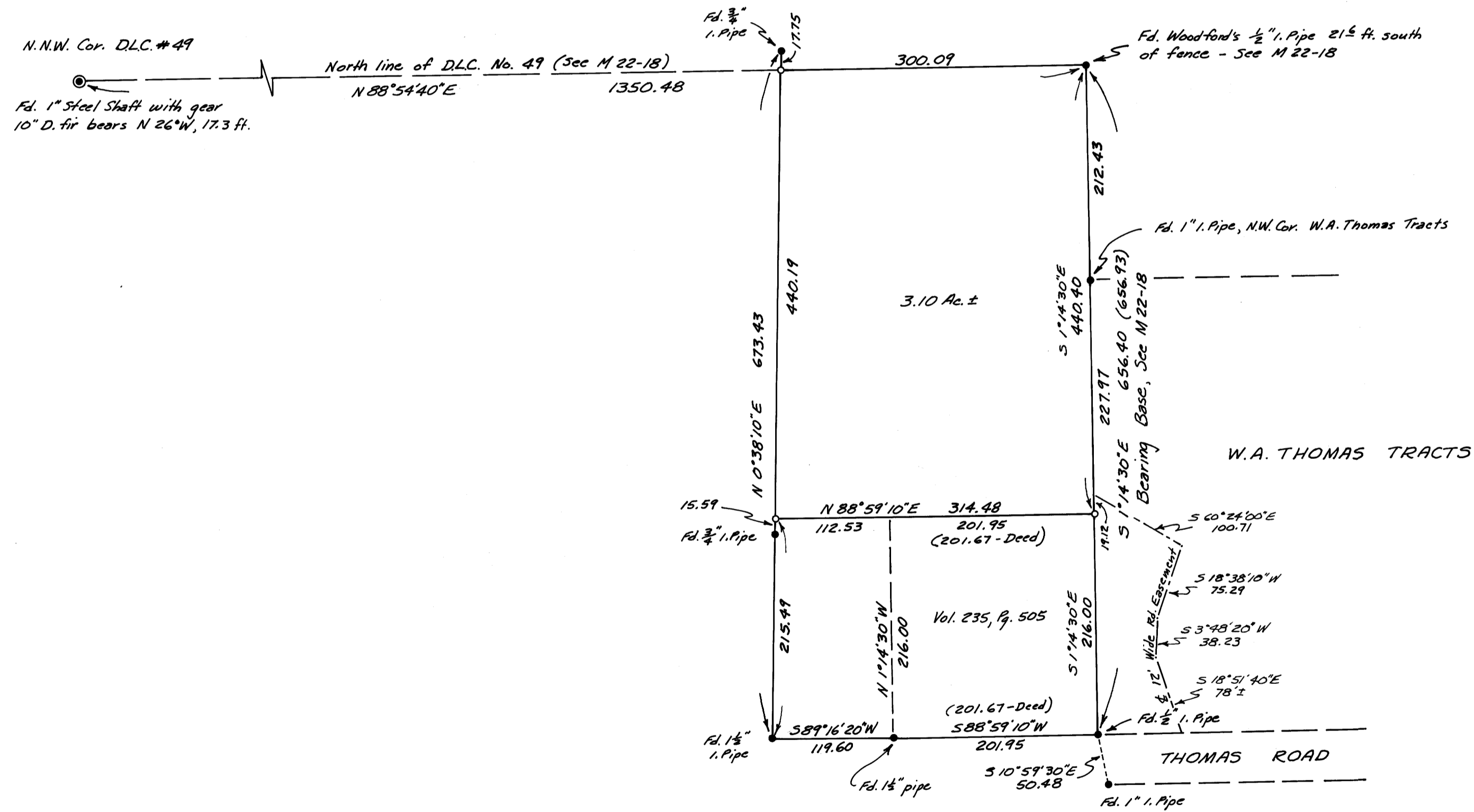
FILED
RECEIVED

MAR 26 1971

COUNTY SURVEYOR
DOUGLAS COUNTY, ORE.

SURVEY IN D.L.C. #49, T25S, R4W, W.M., DOUGLAS CO., ORE.
Surveyed for Arthur Wuthrich and C.L. Parsons by Victor M. McLind
March, 1971
Scale: 1" = 100'

- Indicates monument found as noted
- Indicates set $\frac{3}{8}$ " Iron Rod



Victor M. McLind

M 41 - 32

M 41 - 32