

COUNTY SURVEYORS FILE DATA  
DO NOT REMOVE FROM OFFICE

SURVEY FOR DEED DESCRIPTION IN LOT 15, BLOCK 7, PLAT I, S. L. & W. CO.  
IN T25S, R5W, W.M.

Surveyed for George Smith by Victor M. McLind  
March, 1971

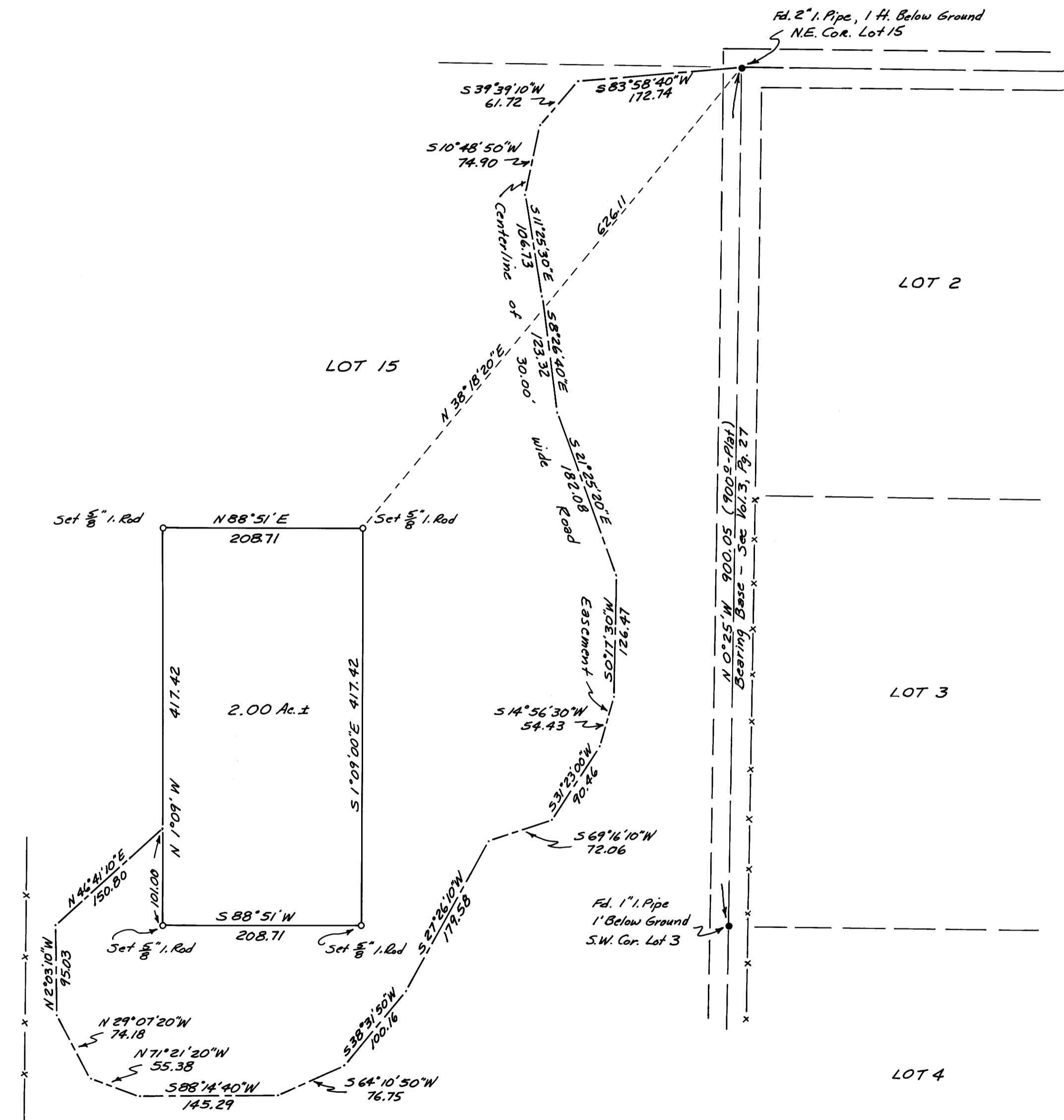
Scale: 1 inch = 100 feet

FILED  
RECEIVED

MAR 26 1971

COUNTY SURVEYOR  
DOUGLAS COUNTY, ORE.

M 41 - 31 P



Victor M. McLind

M 41 - 31