

FILED
RECEIVED

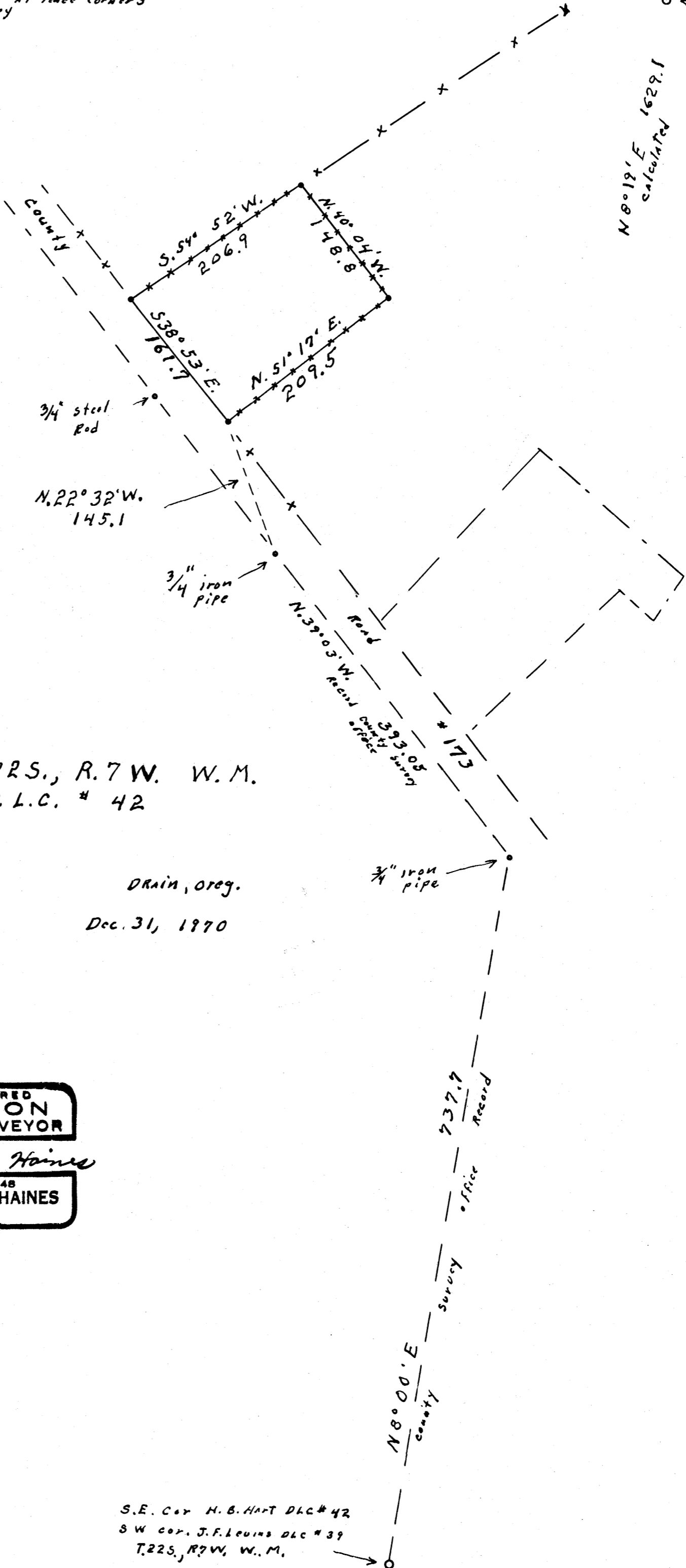
JAN 5 1971

COUNTY SURVEYOR
DOUGLAS COUNTY, ORE.

- $\frac{3}{8}$ " Steel Rods set at fence corners this survey
- Monuments found

○ ← Found hole for NW corner D.L.C. # 39
Rock is about 40.0 S.W.

North ↑



N 8° 19' E calculated 1629.1

N.W. $\frac{1}{4}$ SECT 19, T.22S., R.7W. W.M.
H. B. HART D.L.C. # 42

for

WARREN T. De La Vergne

DRAIN, Oreg.

Scale: 1" = 100'

Dec. 31, 1970

REGISTERED
OREGON
LAND SURVEYOR

Wilford N. Haines

MAY 7, 1948
WILFORD N. HAINES
239

S.E. Cor H. B. Hart D.L.C. # 42
S.W. Cor. J. F. Lewis D.L.C. # 39
T.22S., R.7W., W.M.