

COUNTY SURVEYORS FILE DATA  
DO NOT REMOVE FROM OFFICE

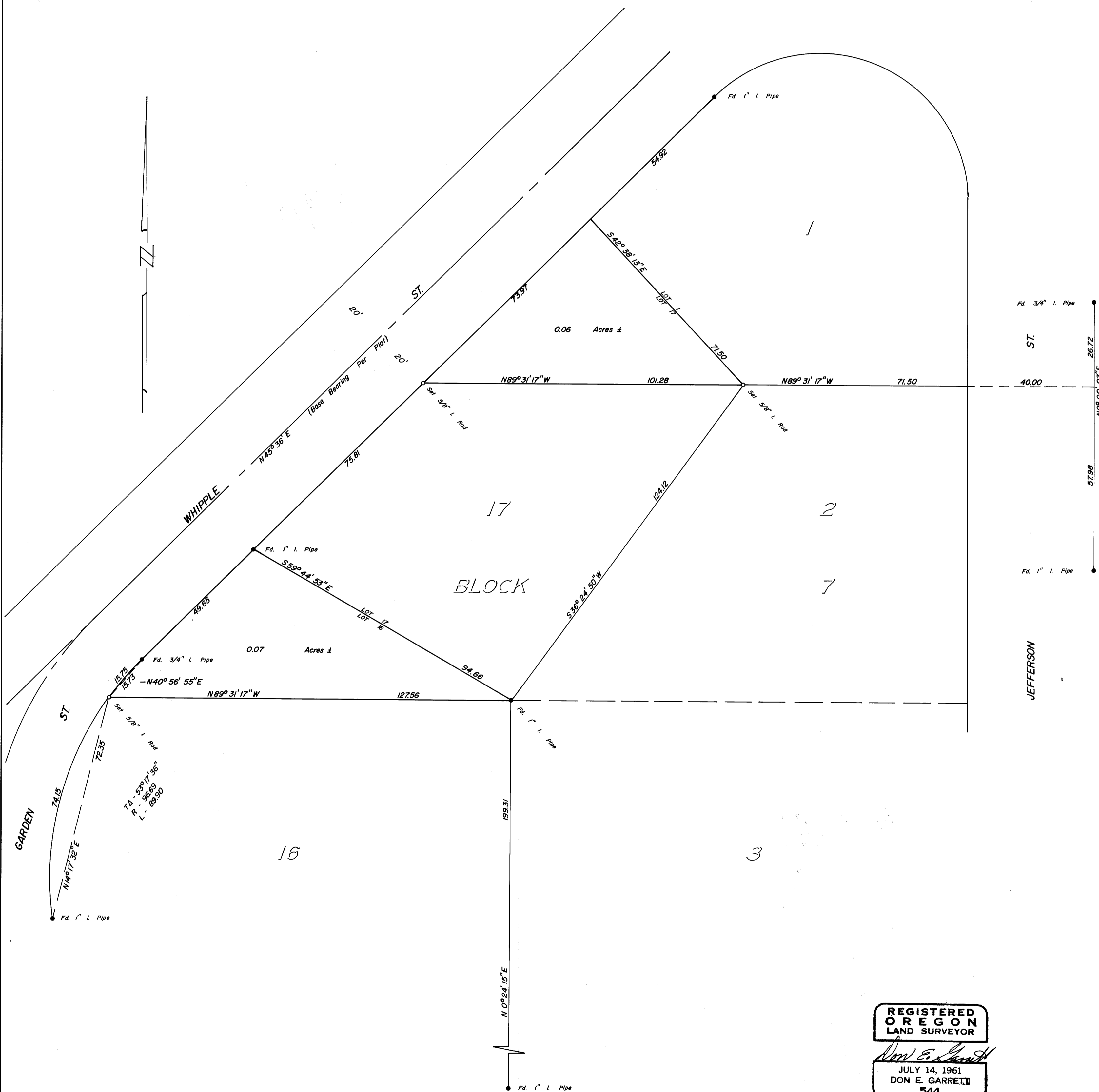
SURVEY IN LOTS 16 & 17, BLOCK 7, GARDEN HOMES, SEC. 14, T 27 S, R 6 W, W.M.  
Surveyed for S & S Builders Inc. by Don E. Garrett  
March 1971

Scale 1" = 20'

FILED  
RECEIVED

MAR 22 1971

COUNTY SURVEYOR  
DOUGLAS COUNTY, OREGON



REGISTERED  
OREGON  
LAND SURVEYOR

*Don E. Garrett*

JULY 14, 1961  
DON E. GARRETT  
544