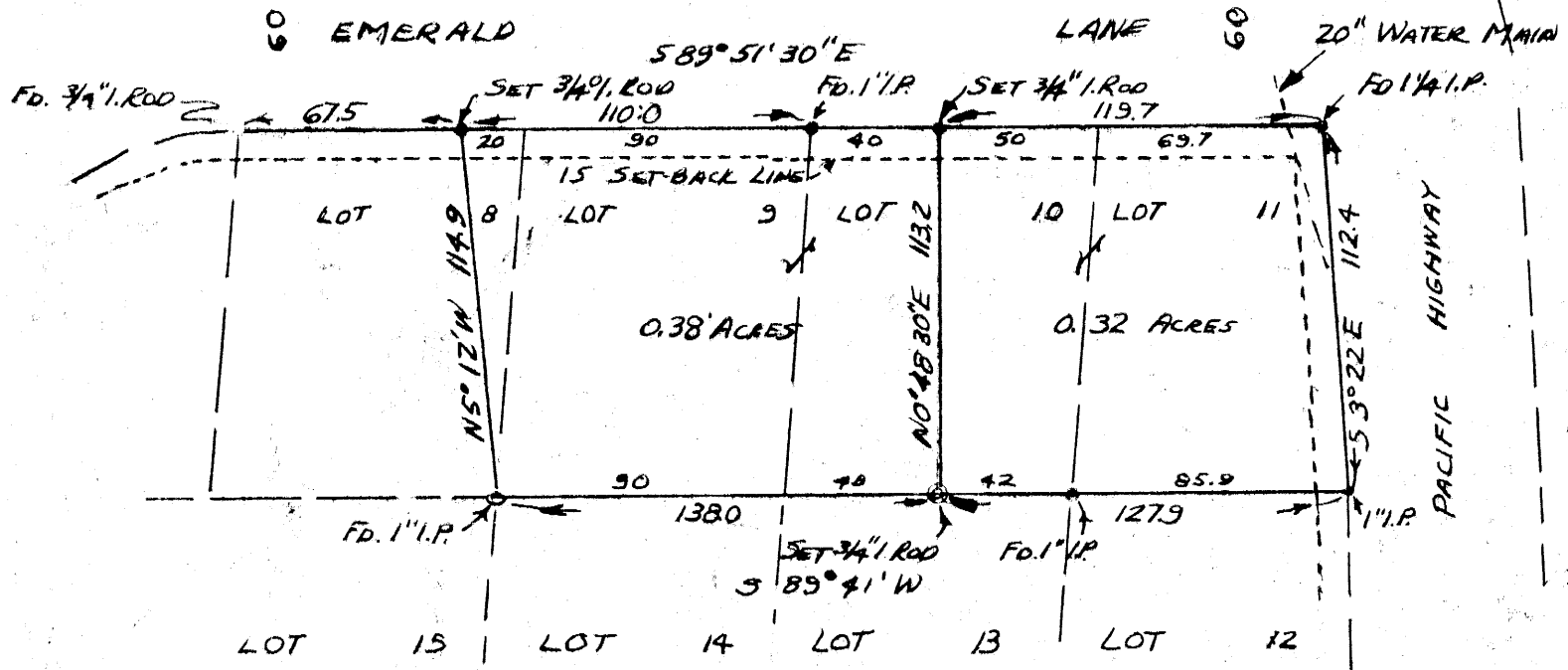


# BONNYVIEW

FILED  
RECEIVED

MAR 1 1971

COUNTY SURVEYOR  
DOUGLAS COUNTY, ORE.



PARTIAL RETRACEMENT OF  
COUNTY SURVEYOR'S MC-79  
FOR LES BLACK  
BY BRUCE ROGERS  
FEB., 1971

## TERRACE

- - FD. ORIGINAL MONUMENT Feb, 1971
- ⊙ - SET 5/8" IRON ROD Feb, 1971

REGISTERED  
OREGON  
LAND SURVEYOR  
**Bruce L. Rogers**  
JULY 10, 1964  
BRUCE L. ROGERS  
650

COUNTY SURVEYOR'S OFFICE  
DOUGLAS COUNTY, OREGON

SURVEY FOR DEED DESCRIPTION  
BONNYVIEW TERRACE

BEN B. IRVING COUNTY SURVEYOR  
SURVEYED NOV. 24, 1954 BY  
JAMES W. BYRON - DEPUTY SCALE 1" = 60'  
SURVEYED FOR A.H. WEBER

THIS COPY MADE FROM  
A XEROX 2510  
DATE Aug 2, 89