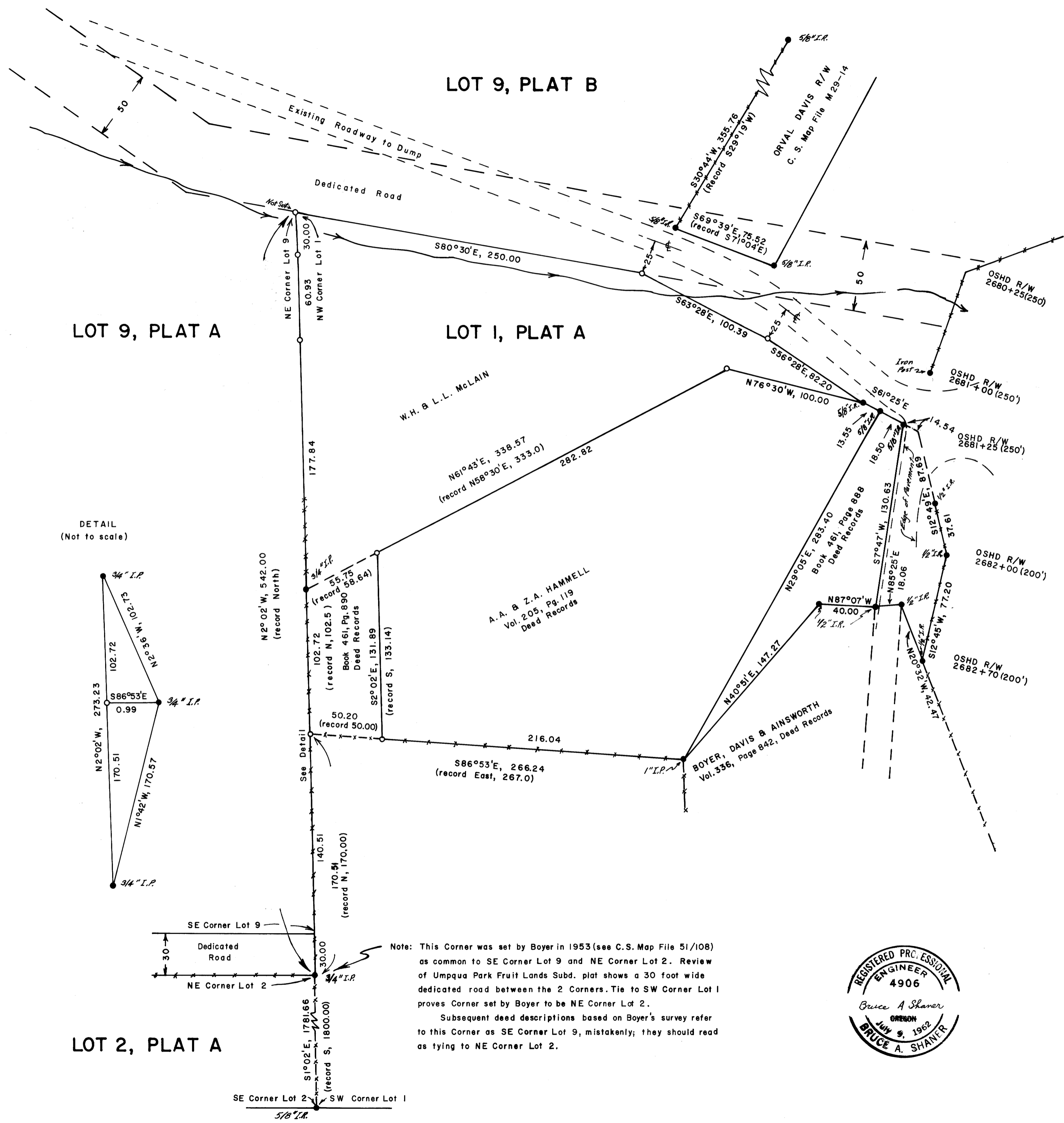


COUNTY SURVEYORS FILE DATA
DO NOT REMOVE FROM OFFICE

FILED
RECORDED
MAR 5 1971
COUNTY SURVEYOR
DOUGLAS COUNTY, OREGON
ML

M 41-19



LOT 9, PLAT A

LOT 9, PLAT B

LOT 1, PLAT A

DETAIL
(Not to scale)

LOT 2, PLAT A

Note: This Corner was set by Boyer in 1953 (see C.S. Map File 51/108) as common to SE Corner Lot 9 and NE Corner Lot 2. Review of Umpqua Park Fruit Lands Subd. plat shows a 30 foot wide dedicated road between the 2 Corners. Tie to SW Corner Lot 1 proves Corner set by Boyer to be NE Corner Lot 2. Subsequent deed descriptions based on Boyer's survey refer to this Corner as SE Corner Lot 9, mistakenly; they should read as tying to NE Corner Lot 2.



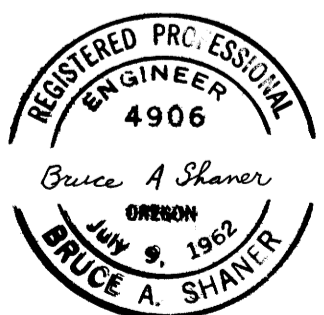
SCALE: 1" = 50'

Basis of Bearings: C.S. Map File M 30-62 & RM 1-50

LEGEND

- Points found as noted
- 5/8" Iron Rod set

SURVEY ESTABLISHING NORTH BOUNDARY OF LOT 1, PLAT A, UMPQUA PARK FRUIT LANDS IN SECTION 35, T27S, R6W, W.M. DOUGLAS COUNTY, OREGON



SURVEYED FOR W.H. McLain

SURVEYED BY BRUCE A. SHANER

MARCH 1, 1971

61-14W