

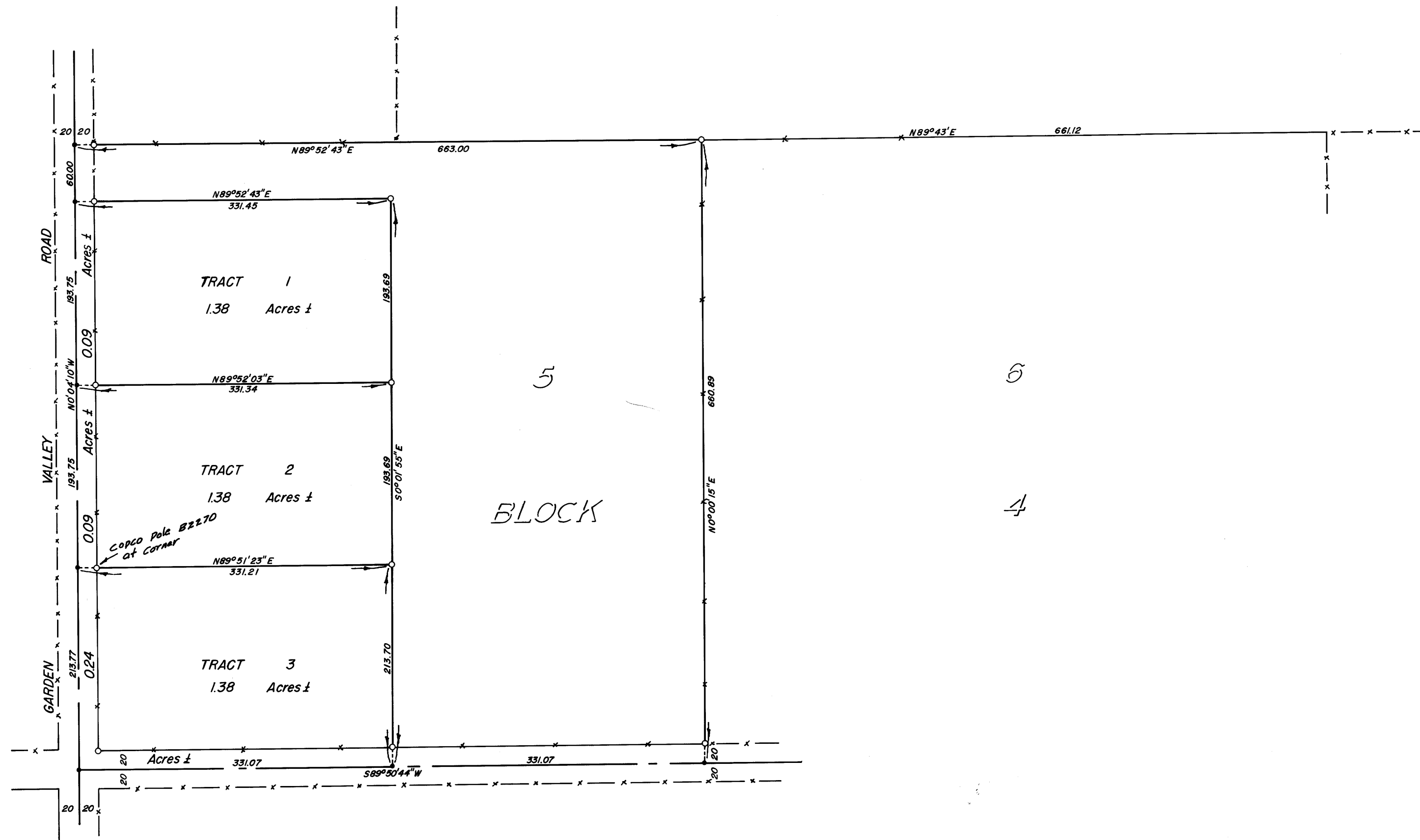
SURVEY OF LOT 5, BLOCK 4, PLAT 'B', ROSEBURG HOME ORCHARD TRACTS, SEC. 29, T 26 S, R 6 W, W.M.  
 Surveyed for Cliff Hess by Don E. Garrett  
 February 1971

COUNTY SURVEYORS FILE DATA  
 DO NOT REMOVE FROM OFFICE

Scale 1" = 100'

FILED  
 RECEIVED  
 FEB 22 1971  
 COUNTY OF DOUGLAS  
 DOUGLAS COUNTY

Bearings are based on a Solar Observation taken February 12, 1971.  
 o - Set 5/8" I. Rod



REGISTERED  
 OREGON  
 LAND SURVEYOR  
 Don E. Garrett  
 JULY 14, 1961  
 DON E. GARRETT  
 544

M 41 - 17

M 41 - 17