

COUNTY SURVEYORS FILE DATA  
DO NOT REMOVE FROM OFFICE

FILED  
RECEIVED

FEB 16 1971

COUNTY SURVEYOR  
DOUGLAS COUNTY, OREGON

**SURVEY IN SECTION 14, TOWNSHIP 28 SOUTH, RANGE 6 WEST, WILLAMETTE MERIDIAN**

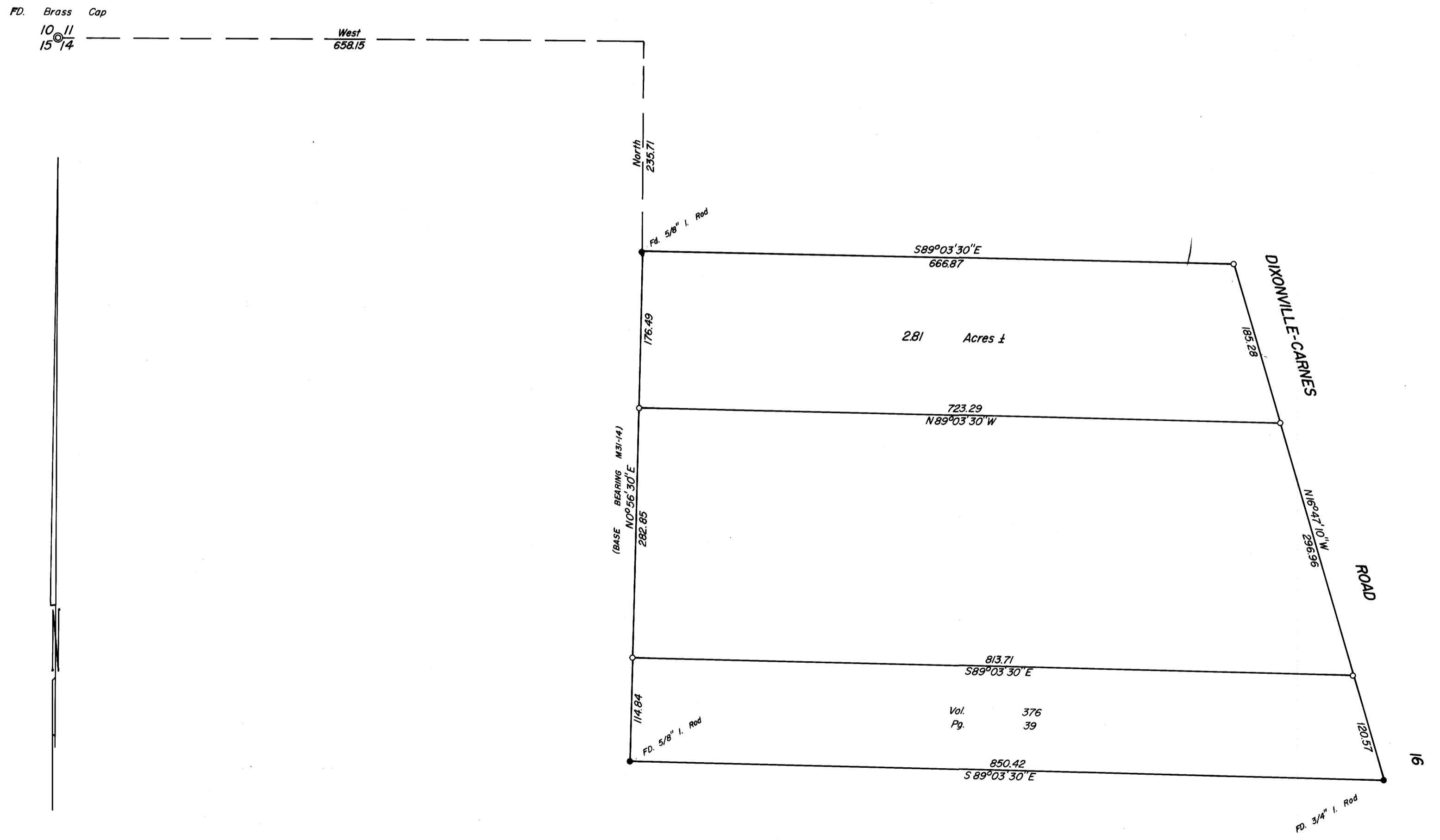
Surveyed for Oren Locks by Don E. Garrett

February 1971

Scale 1" = 100'

o - Set 5/8" I. Rod

NOTE: Based on "Pearl Subdivision" as recorded in Vol. 8 Page 42, Plat Records of Douglas County, Oregon, field measurements taken during November, 1978, indicate actual bearings to be approximately 1° 20' counterclockwise from the values as stated on this survey map. See C.S. File 59/43. November 14, 1978 G.L.L. Douglas County Surveyor's Office.



REGISTERED  
OREGON  
LAND SURVEYOR

*Don E. Garrett*

JULY 14, 1961  
DON E. GARRETT  
544

71-174

MAP FILE M 41-14