

FILED  
RECEIVED

JUL 3 1970

COUNTY SURVEYOR  
DOUGLAS COUNTY, ORE.

Portions of Sections 14 and 23

Twp. 22 S., R. 10 W.

DOUGLAS COUNTY, ORE.

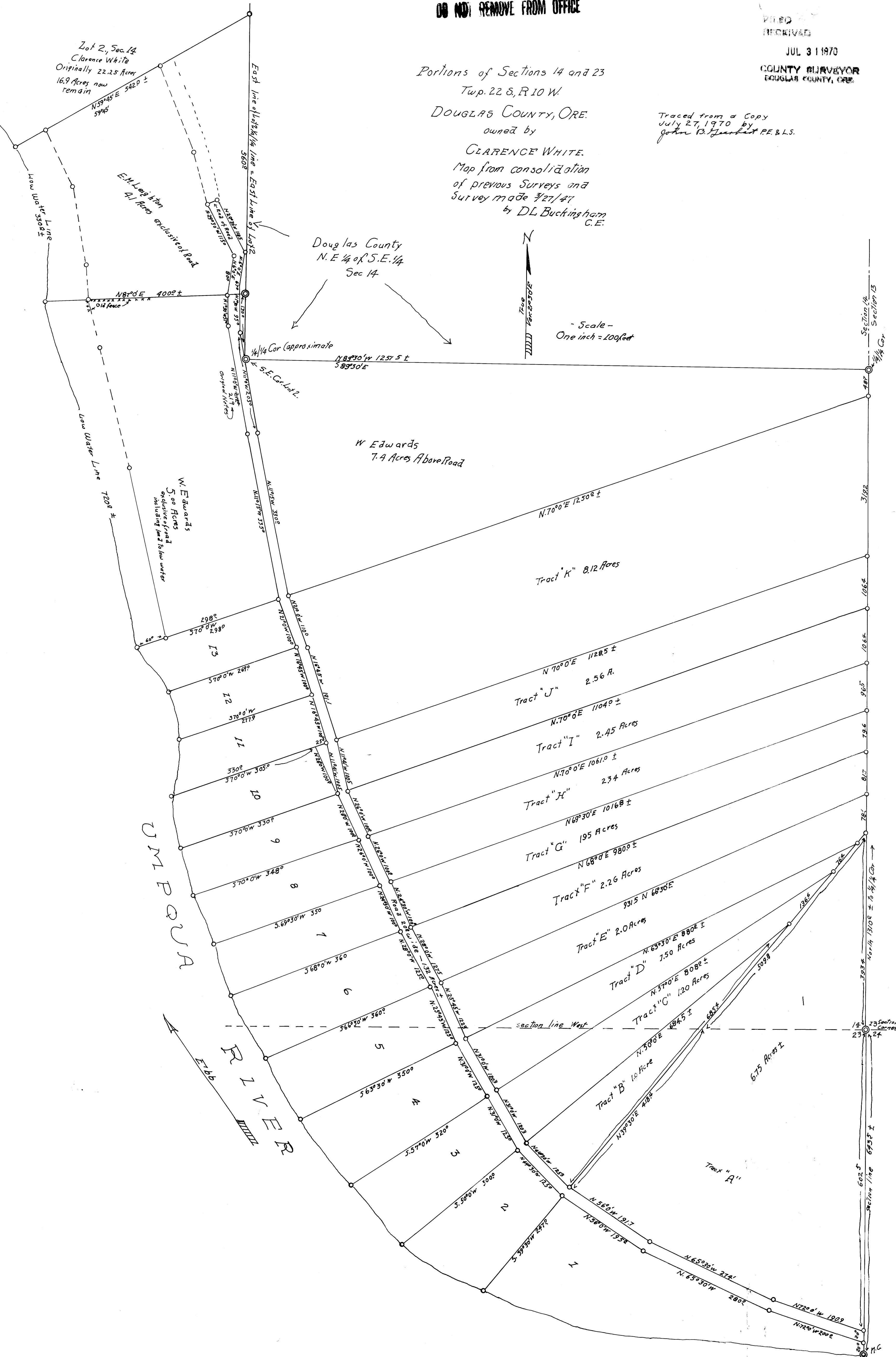
owned by

CLARENCE WHITE.

Map from consolidation  
of previous Surveys and  
Survey made 3/27/47

by DL Buckingham  
C.E.

Traced from a Copy  
July 27, 1970 by  
John B. Lambert P.E. & L.S.



UMPUQA

RIVER

Section 14  
Section 23

Section 15  
Section 24

Section 14  
Section 23

Section 15  
Section 24

Section 14  
Section 23

Section 15  
Section 24

Section 14  
Section 23

Section 15  
Section 24

Section 14  
Section 23

Section 15  
Section 24

Section 14  
Section 23

Section 15  
Section 24

Section 14  
Section 23

1449 FILE 114219