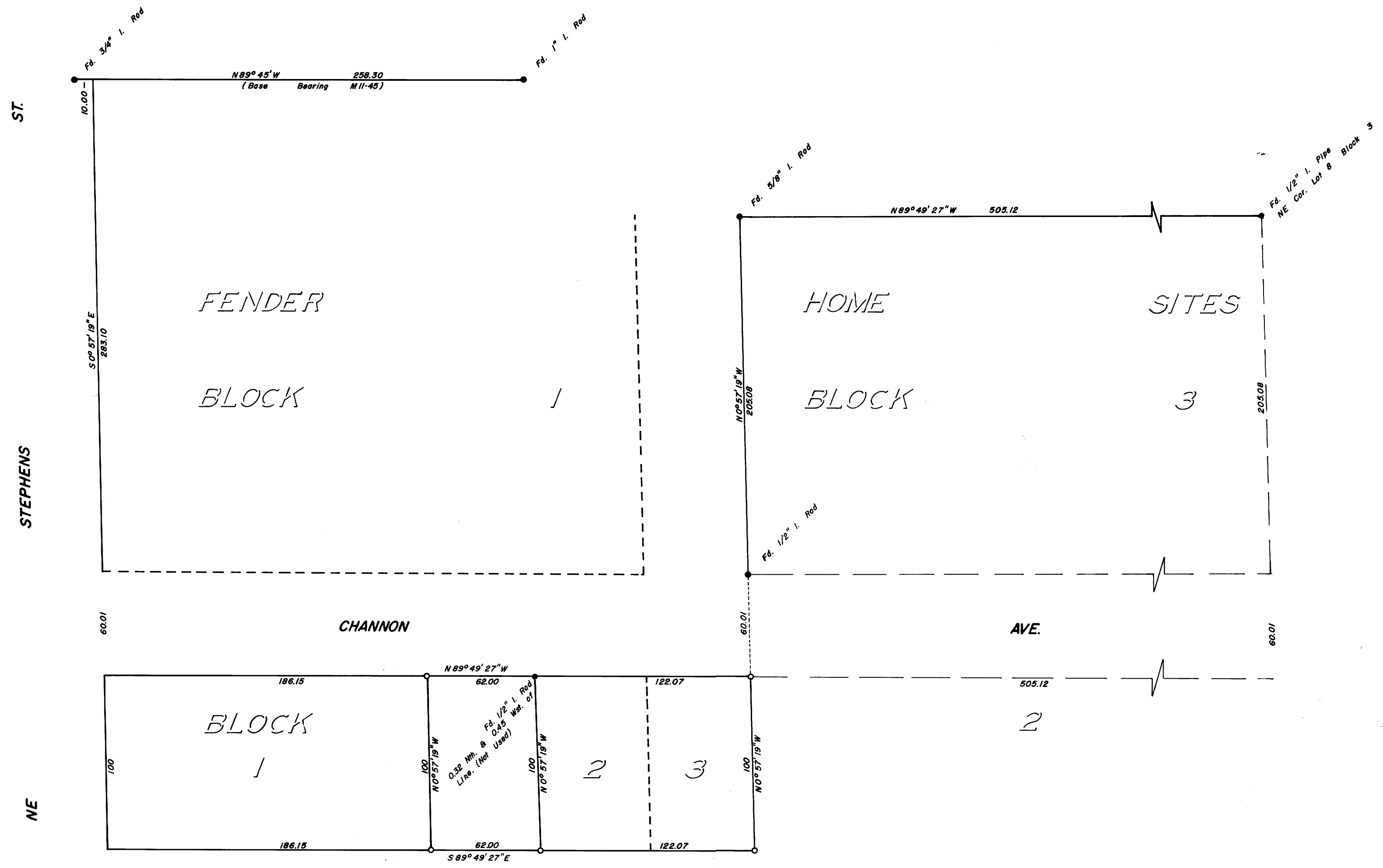


COUNTY SURVEYORS FILE DATA
DO NOT REMOVE FROM OFFICE

LOTS 1, 2, & 3, BLOCK 2, FENDER HOME SITES
SURVEYED FOR THE APOSTOLIC FAITH BY DON E. GARRETT
JULY 1970
SCALE 1" = 50'
O-SET 5/8" I. ROD

REGISTERED
OREGON
LAND SURVEYOR
Don E. Garrett
JULY 14, 1961
DON E. GARRETT
544

FILED
RECEIVED
JUL 30 1970
COUNTY SURVEYOR
DOUGLAS COUNTY, ORE.



M 40 - 8

M 40 - 8