

SURVEY IN LOTS 1, 2, 3, 4, 5 & 6 PLAT "G" ROSEBURG HOME ORCHARD TRACTS IN SECTION 6, TOWNSHIP 26 SOUTH, RANGE 5 WEST, W.M.

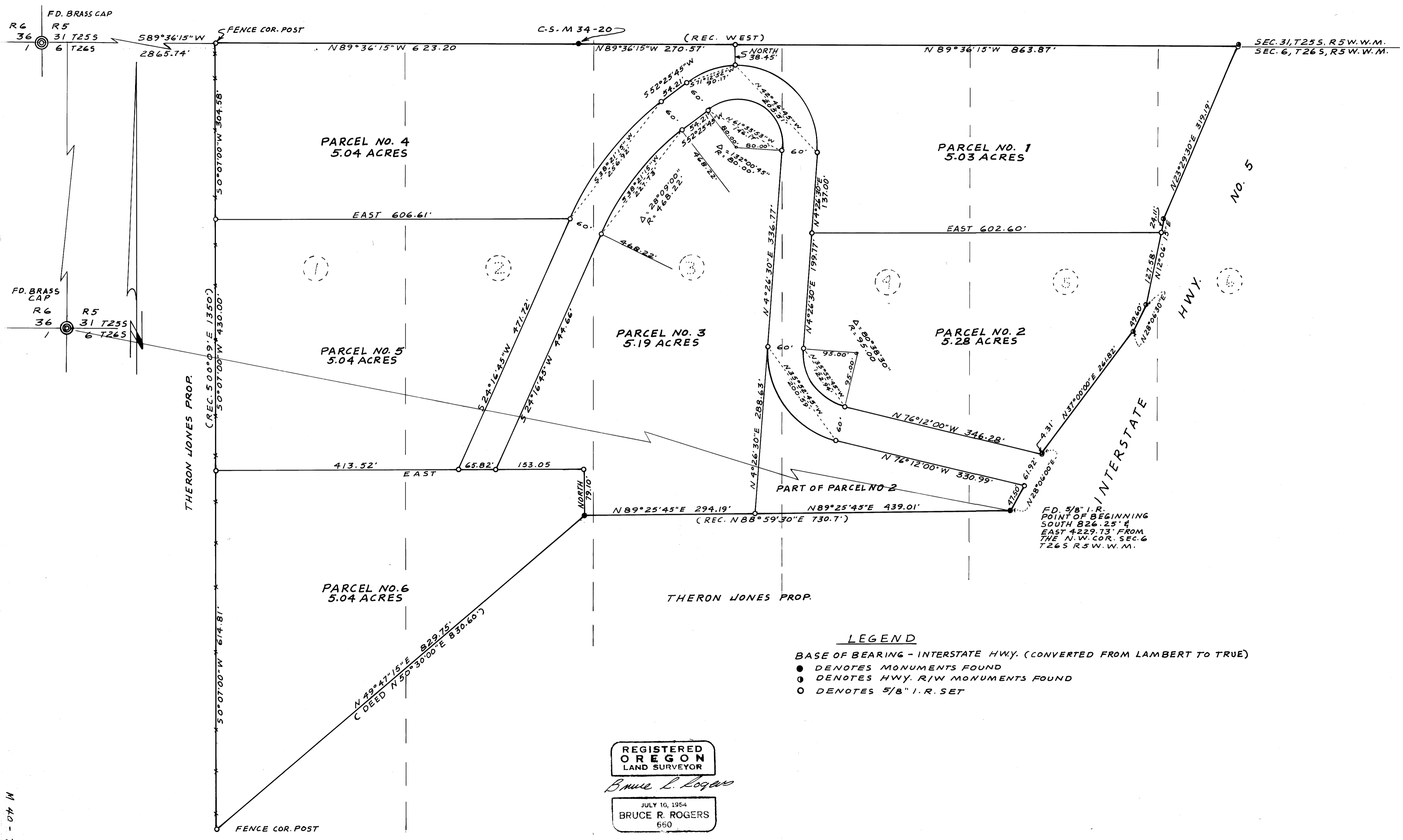
SURVEYED FOR - STANLEY F. & ALICE S. MOHR
SURVEYED BY - BRUCE R. ROGERS

COUNTY SURVEYORS FILE DATA
DO NOT REMOVE FROM OFFICE

AUGUST, 1970
SCALE 1" = 100'

FILED
RECEIVED
AUG 17 1970
COUNTY SURVEYOR
DOUGLAS COUNTY, OREGON

M 40 - 77



LEGEND

- BASE OF BEARING - INTERSTATE HWY. (CONVERTED FROM LAMBERT TO TRUE)
- DENOTES MONUMENTS FOUND
- DENOTES HWY. R/W MONUMENTS FOUND
- DENOTES 5/8" I.R. SET

REGISTERED
OREGON
LAND SURVEYOR

Bruce R. Rogers

JULY 10, 1954
BRUCE R. ROGERS
660

M 40 - 77