

FILED  
RECEIVED

DEC 4 1970

COUNTY SURVEYOR  
DOUGLAS COUNTY, ORE.

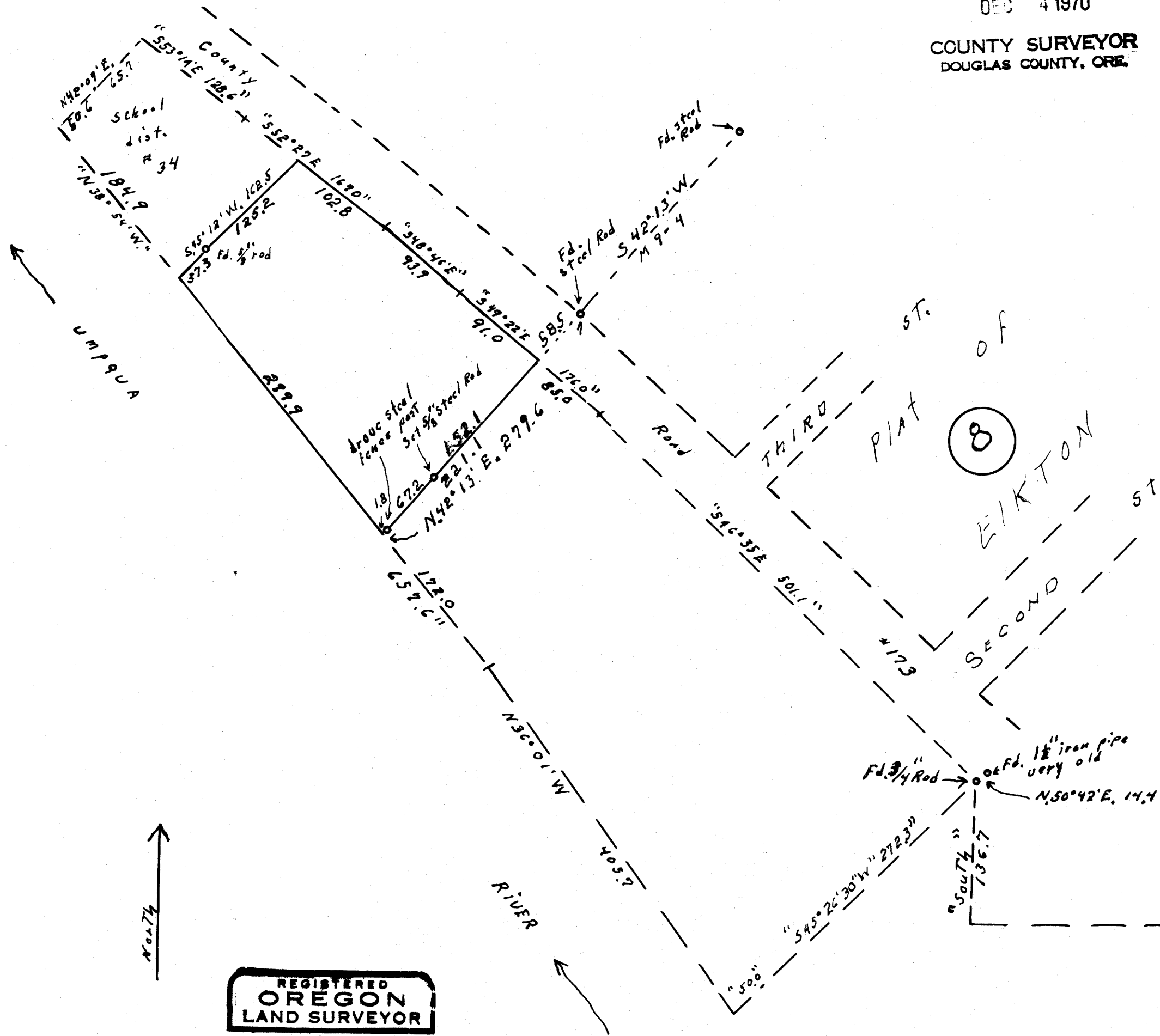
SURVEY FOR DEED DESCRIPTION  
SECT. 19, T.22S. R.7W. WM  
CITY OF ELKTON

Arley Marsh

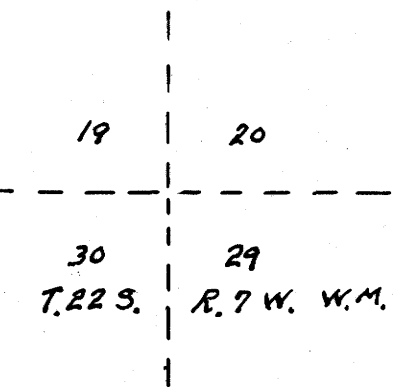
ELKTON OREG.

Scale: 1" = 100'

Nov. 2, 1970



REGISTERED  
OREGON  
LAND SURVEYOR  
*Wilford N. Haines*  
MAY 7, 1948  
WILFORD N. HAINES  
239



MAY FILE M 40-65

M 40-65