

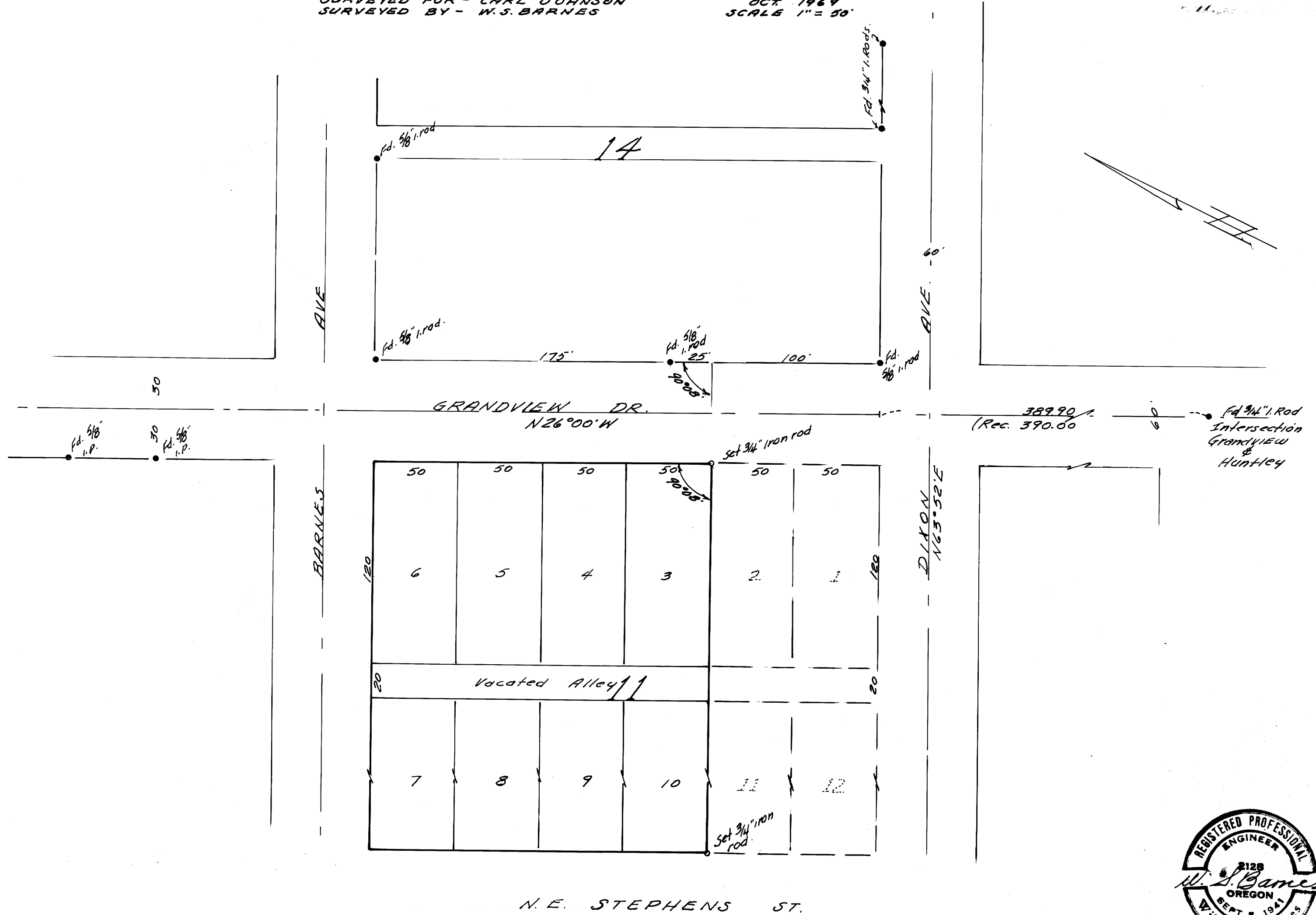
COUNTY SURVEYORS FILE DATA
DO NOT REMOVE FROM OFFICE

DEC 2 1970

SURVEY TO ESTABLISH PROPERTY LINES
IN BLOCK 11, JONES' ADDITION.
ROSEBURG, ORE.

SURVEYED FOR - CARL JOHNSON
SURVEYED BY - W.S. BARNES

OCT. 1969
SCALE 1" = 50'



MAP FILE M 40-64