

SURVEY IN SECTIONS 1 & 2, TOWNSHIP 26 SOUTH, RANGE 3 WEST, WILLAMETTE MERIDIAN

Surveyed for Lavola J. Bakken by Don E. Garrett

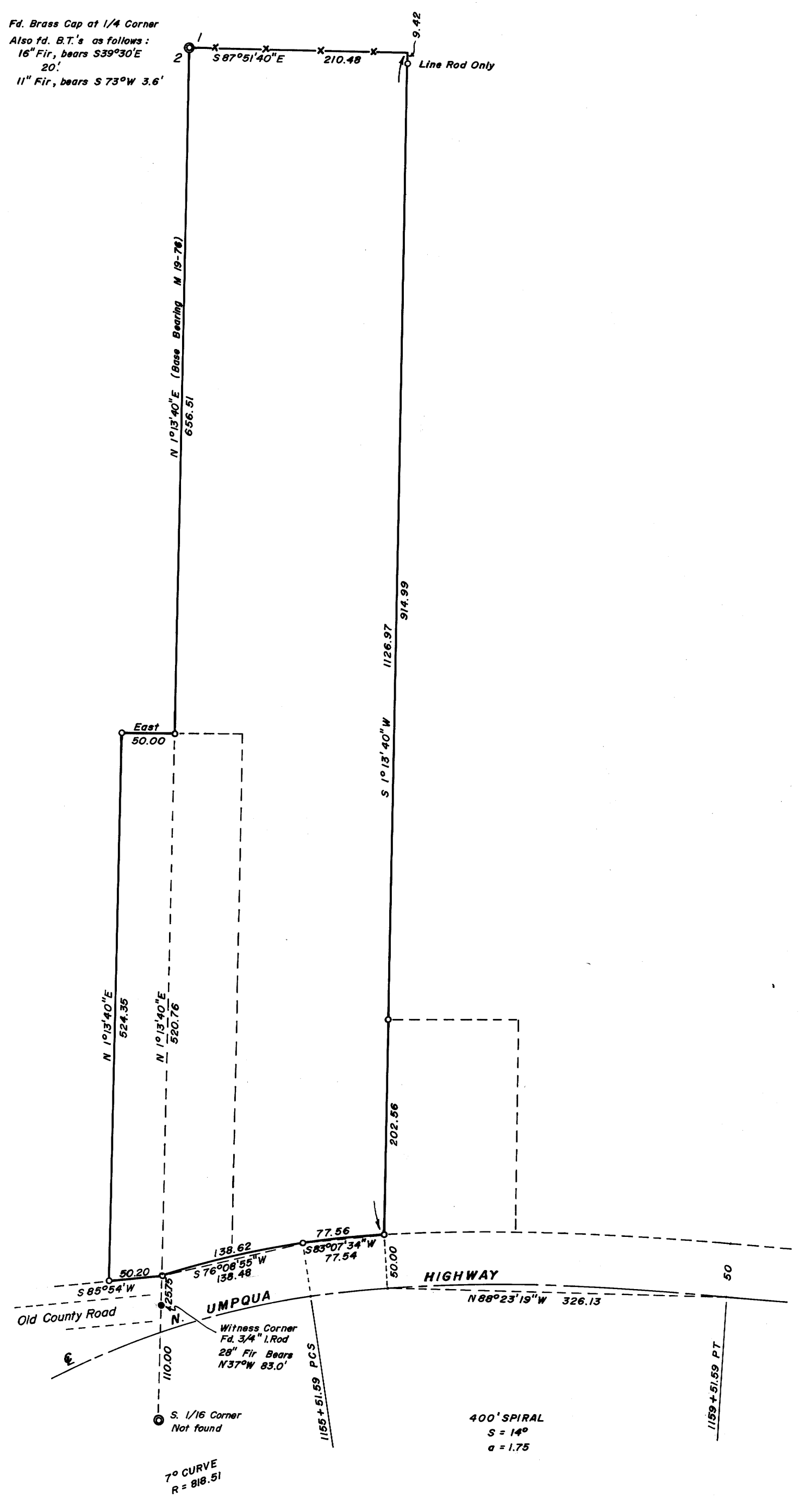
COUNTY SURVEYORS FILE DATA  
DO NOT REMOVE FROM OFFICE

Scale : 1" = 100'

November 1970

o - Set 5/8" I. Rod

FILED  
NOV 27 1970  
COUNTY SURVEYORS  
OFFICE



REGISTERED  
OREGON  
LAND SURVEYOR  
*Don E. Garrett*  
JULY 14, 1961  
DON E. GARRETT  
544

Note: No R/W monuments found. Highway centerline located from center of asphalt surface