

SURVEY FOR DEED DESCRIPTION
IN LOT 21, BLOCK I, PLAT J,
S. L. & W. CO., DOUGLAS CO., ORE.

SURVEYED FOR - FRED PALERMO
SURVEYED BY - W. S. BARNES

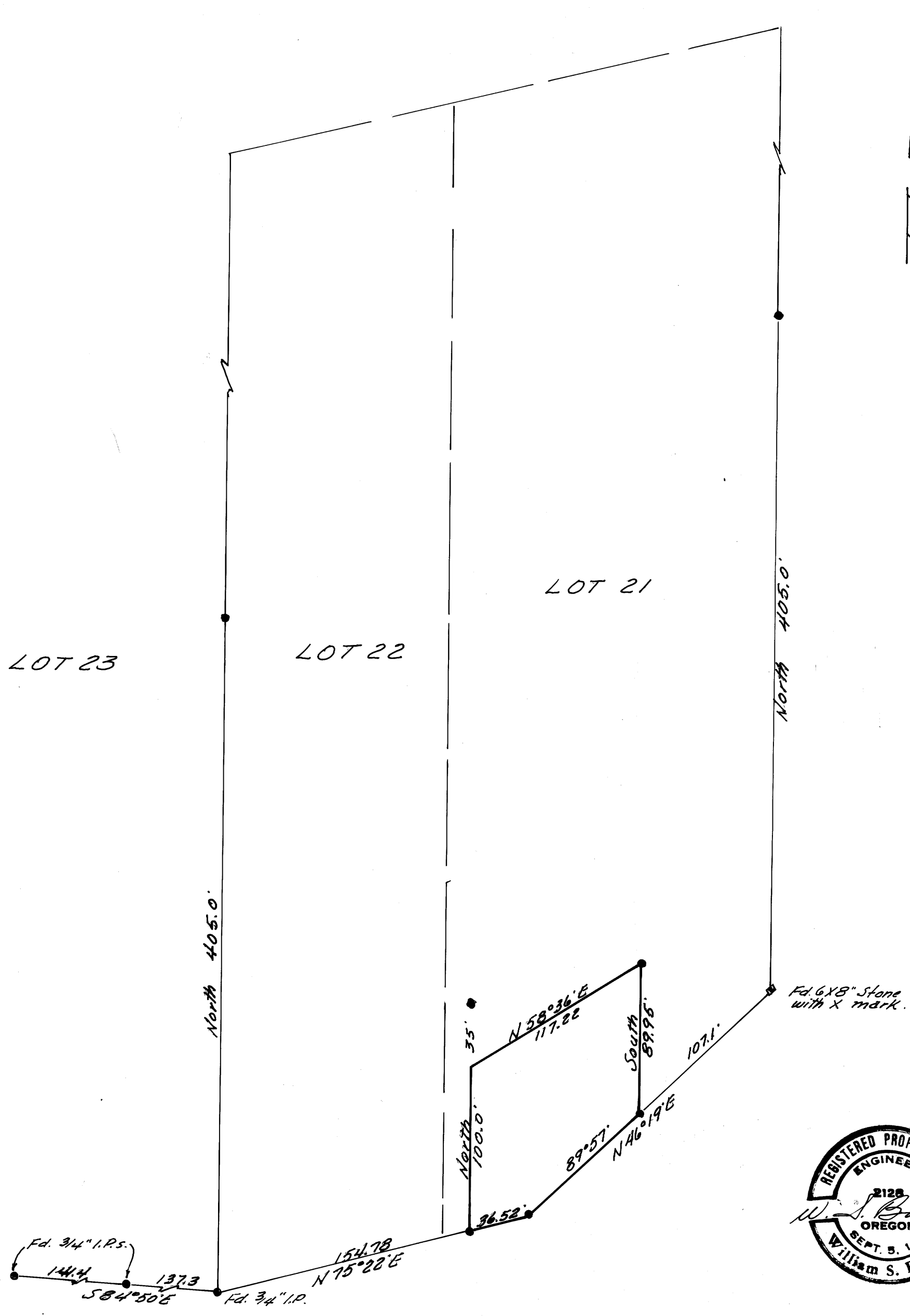
NOV. 1970
SCALE 1" = 60'

FILED
RECEIVED

NOV 25 1970

COUNTY SURVEYOR
DOUGLAS COUNTY, ORE.

COUNTY SURVEYORS FILE DATA
DO NOT REMOVE FROM OFFICE



- 5/8" iron rods found, except as noted.
- Base bearing taken from South line of Lots 23 & 24.
- Reference M 39-28