

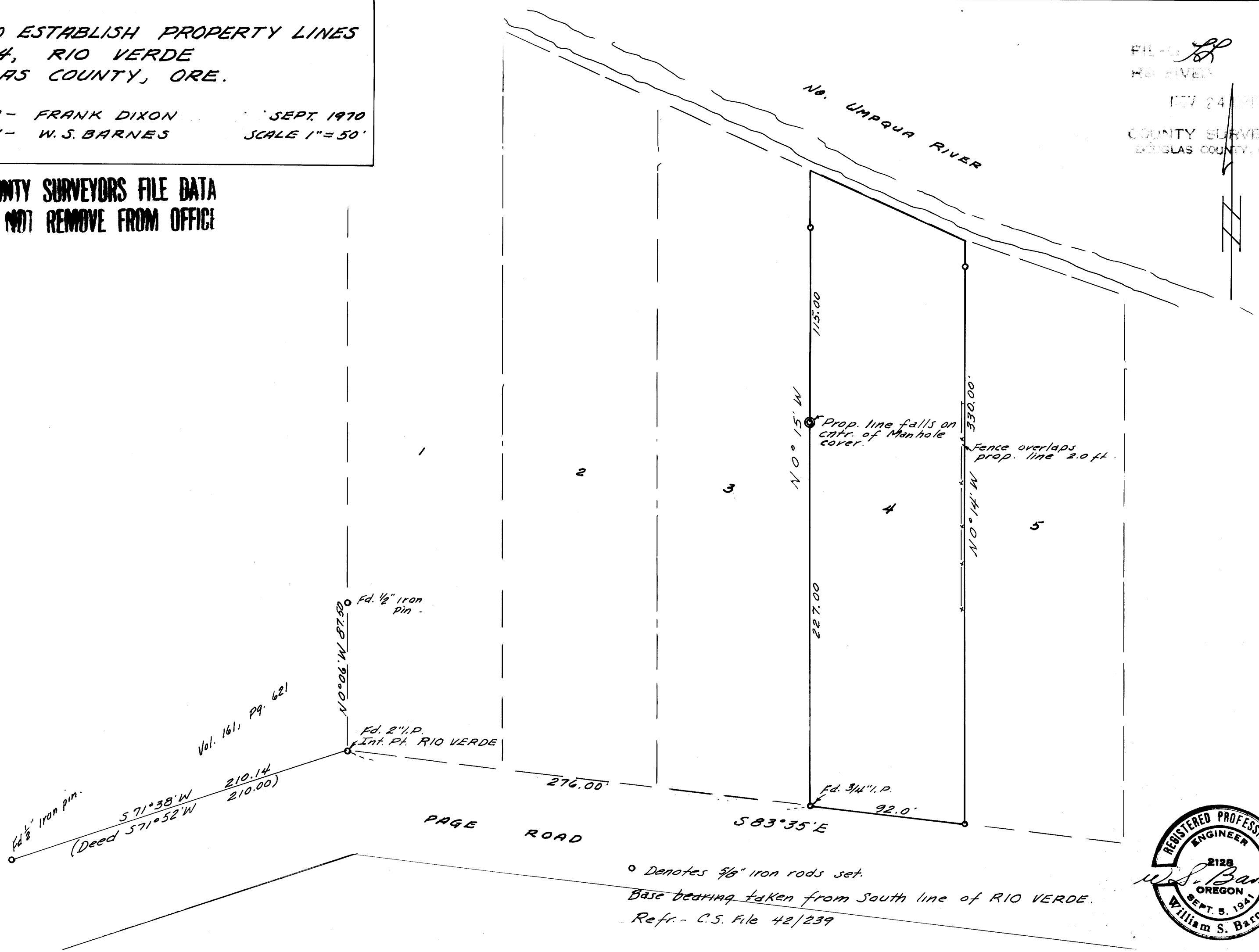
**SURVEY TO ESTABLISH PROPERTY LINES
LOT 4, RIO VERDE
DOUGLAS COUNTY, ORE.**

SURVEYED FOR - FRANK DIXON
SURVEYED BY - W.S. BARNES

SEPT. 1970
SCALE 1" = 50'

FILED *SB*
RECEIVED
SEP 24 1970
COUNTY SURVEYOR
DOUGLAS COUNTY, ORE.

**COUNTY SURVEYORS FILE DATA
DO NOT REMOVE FROM OFFICE**



o Denotes 3/8" iron rods set.
Base bearing taken from South line of RIO VERDE.
Refr. - C.S. File 42/239



M 40-61

M 40-61