

COUNTY SURVEYORS FILE DATA
DO NOT REMOVE FROM OFFICE

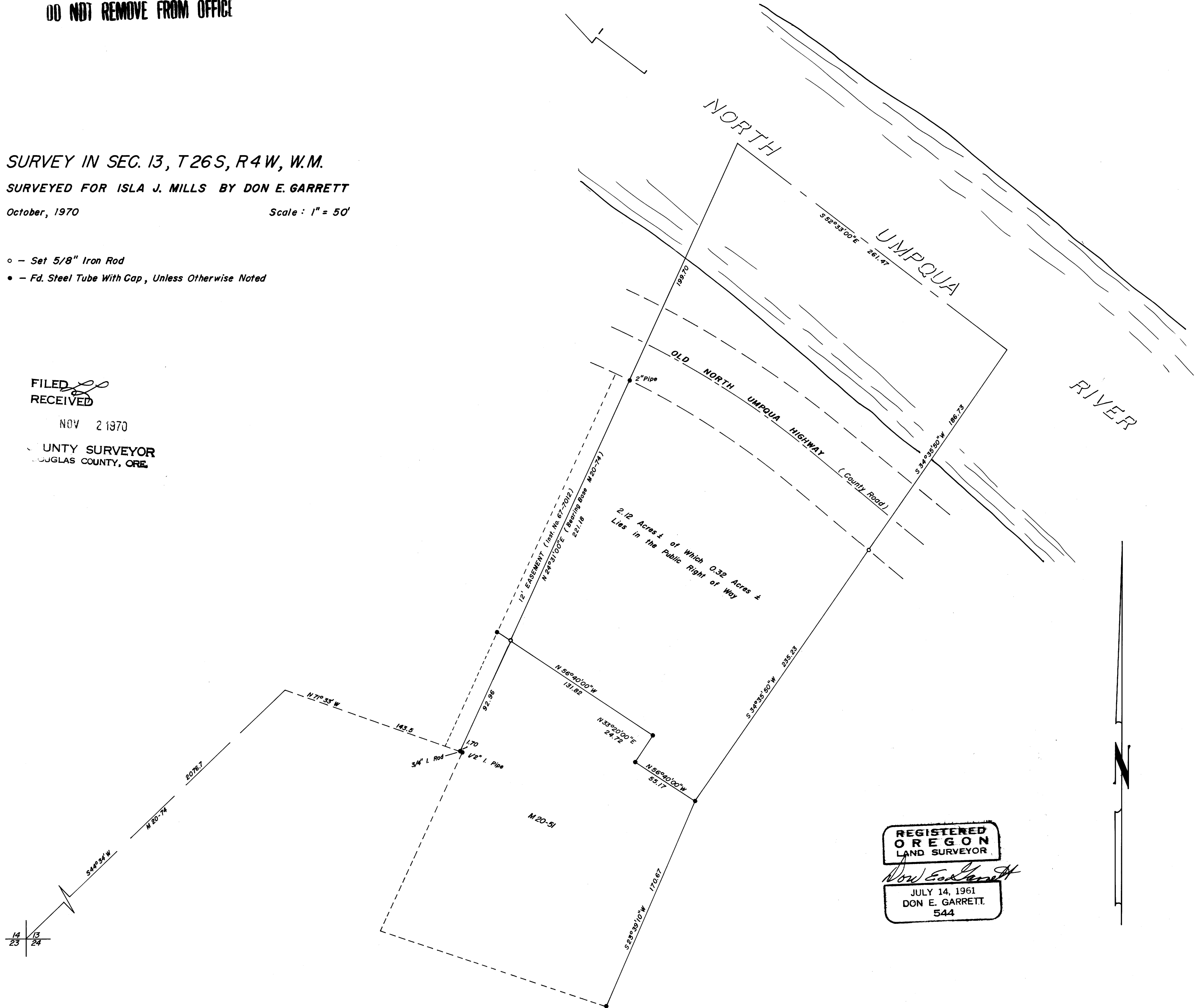
SURVEY IN SEC. 13, T26S, R4W, W.M.
SURVEYED FOR ISLA J. MILLS BY DON E. GARRETT
October, 1970 Scale: 1" = 50'

- o - Set 5/8" Iron Rod
- - Fd. Steel Tube With Cap, Unless Otherwise Noted

FILED
RECEIVED

NOV 2 1970

COUNTY SURVEYOR
DOUGLAS COUNTY, ORE.



REGISTERED
OREGON
LAND SURVEYOR

Don E. Garrett
JULY 14, 1961
DON E. GARRETT
544

M 40-53

M 40-53