

SURVEY IN SECT. 15, DLC 50, TWP. 25 SOUTH, RNG. 6 WEST, WILLAMETTE MERIDIAN  
 Surveyed for Earl Stonerod by Don E. Garrett  
 October 1970

COUNTY SURVEYORS FILE DATA  
 DO NOT REMOVE FROM OFFICE

Scale 1" = 100'

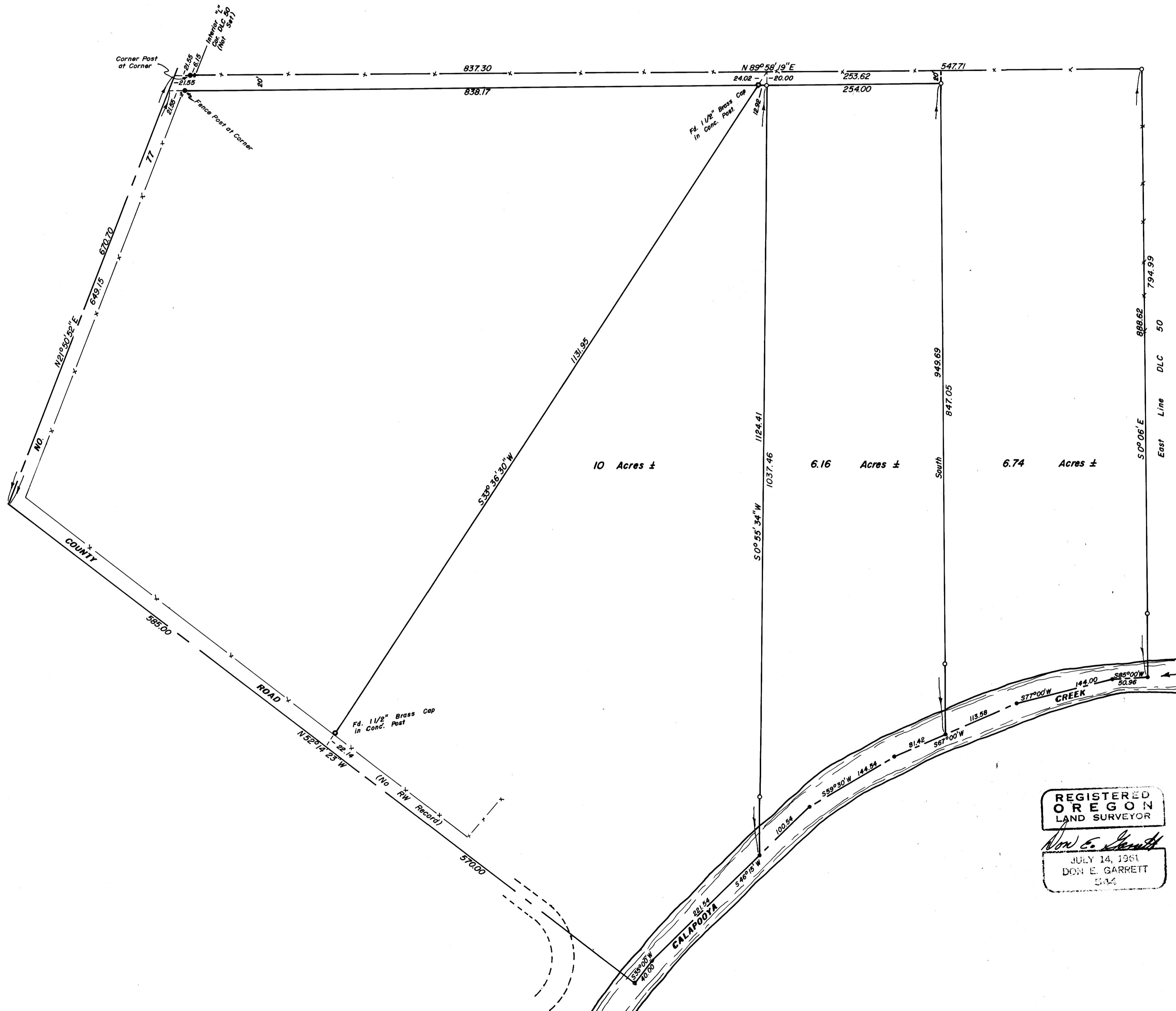
BEARINGS BASED ON SOLAR OBSERVATION TAKEN OCTOBER 1, 1970

○ SET 5/8" IRON ROD

FILED  
 RECEIVED

OCT 19 1970

COUNTY SURVEYOR  
 DOUGLAS COUNTY, OREGON



M 40 - 46

M 40 - 46