

**SURVEY IN LOT 8, BLOCK 3, PLAT "J";
S.L. & W. CO. SUTHERLIN, ORE.**

SURVEYED FOR - U.S. NAT. BANK.
SURVEYED BY - W.S. BARNES

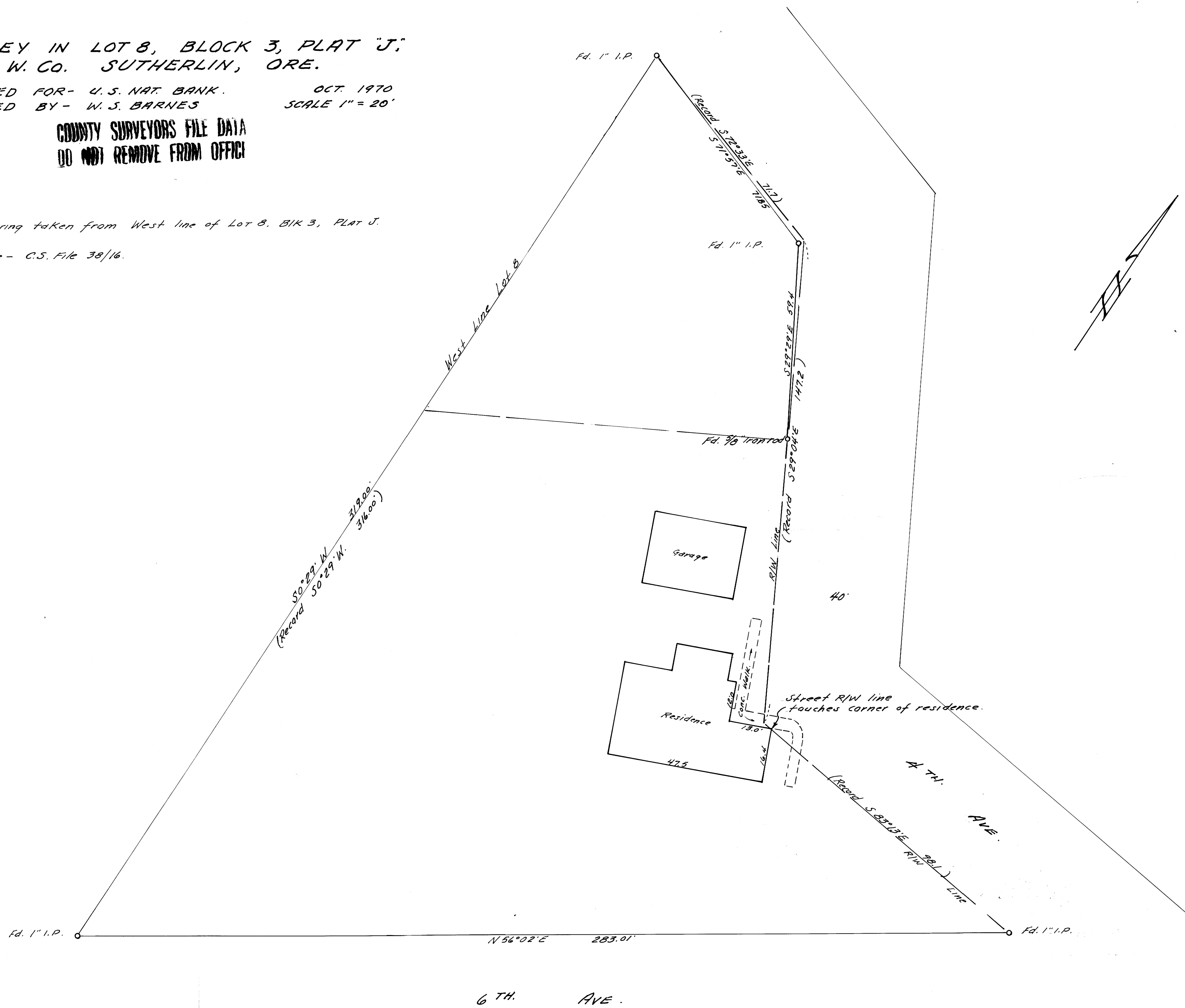
OCT. 1970
SCALE 1" = 20'

**COUNTY SURVEYORS FILE DATA
DO NOT REMOVE FROM OFFICE**

Base bearing taken from West line of Lot 8, BIK 3, PLAT J.

Reference - C.S. File 38/16.

FILED
RECEIVED
OCT 15 1970
COUNTY OF CLATSOP
DOUGLAS COUNTY, ORE.



M 40 - 45

M 40 - 45