

tt - ot w

DO NOT REMOVE FROM OFFICE

FILED
RECEIVED

OCT 12 1970

COUNTY SURVEYOR
DOUGLAS COUNTY, ORE.

SECT. 9, T. 23 S., R. 4 W. W.M.

Mrs. Evelyn Patrick

Eugene, Ore.

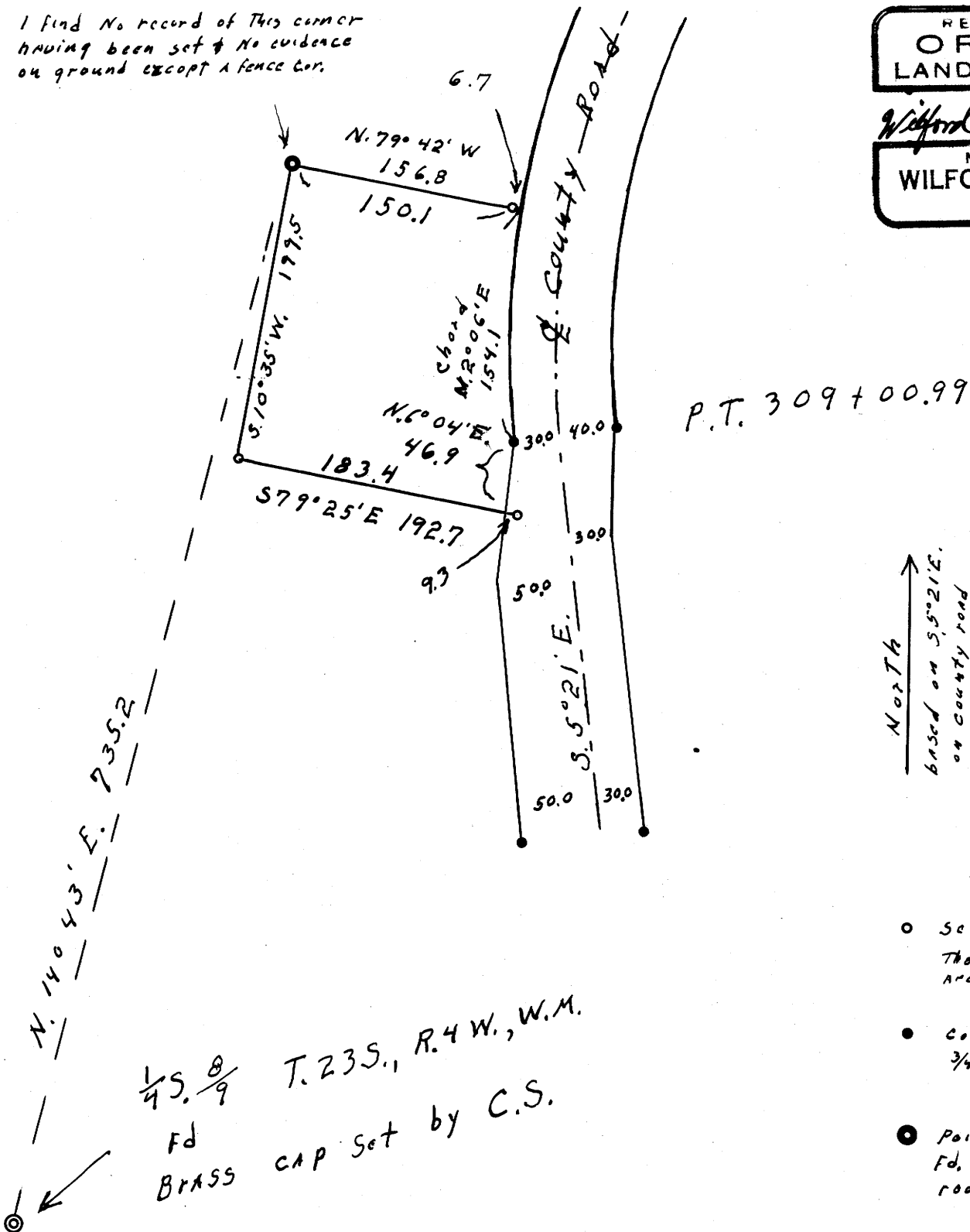
Scale: 1" = 100'

Oct. 8, 1970

Deed description calls for this point to be 560 ft South and 198 ft East of N.W. corner of the 6 W 1/4 of NW 1/4 Sect 9 T23S R4W

I find no record of this corner having been set & no evidence on ground except a fence cor.

REGISTERED
OREGON
LAND SURVEYOR
Wilford N. Haines
MAY 7, 1948
WILFORD N. HAINES
239



- Set 5/8" steel Rods
Those set on County road are on fence line
- County road R/W
3/4" rods + posts
- Point of beginning
Fd. 1 1/4" pipe set 3/8" rod inside

1/4 S. 8/9 T. 23 S., R. 4 W., W.M.
Fd BRASS CAP set by C.S.