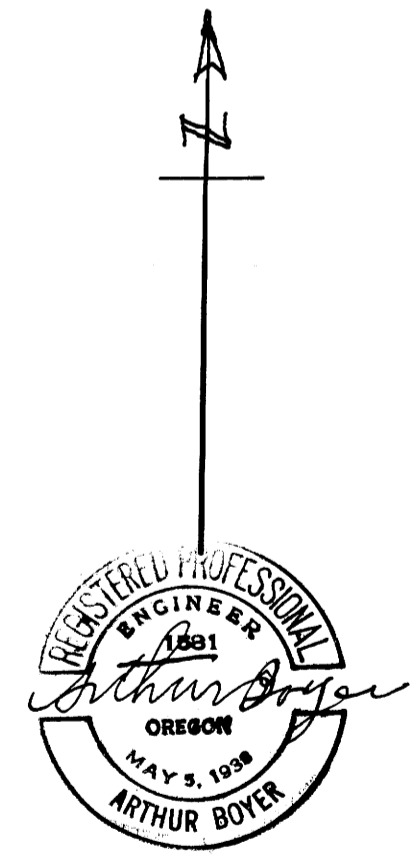
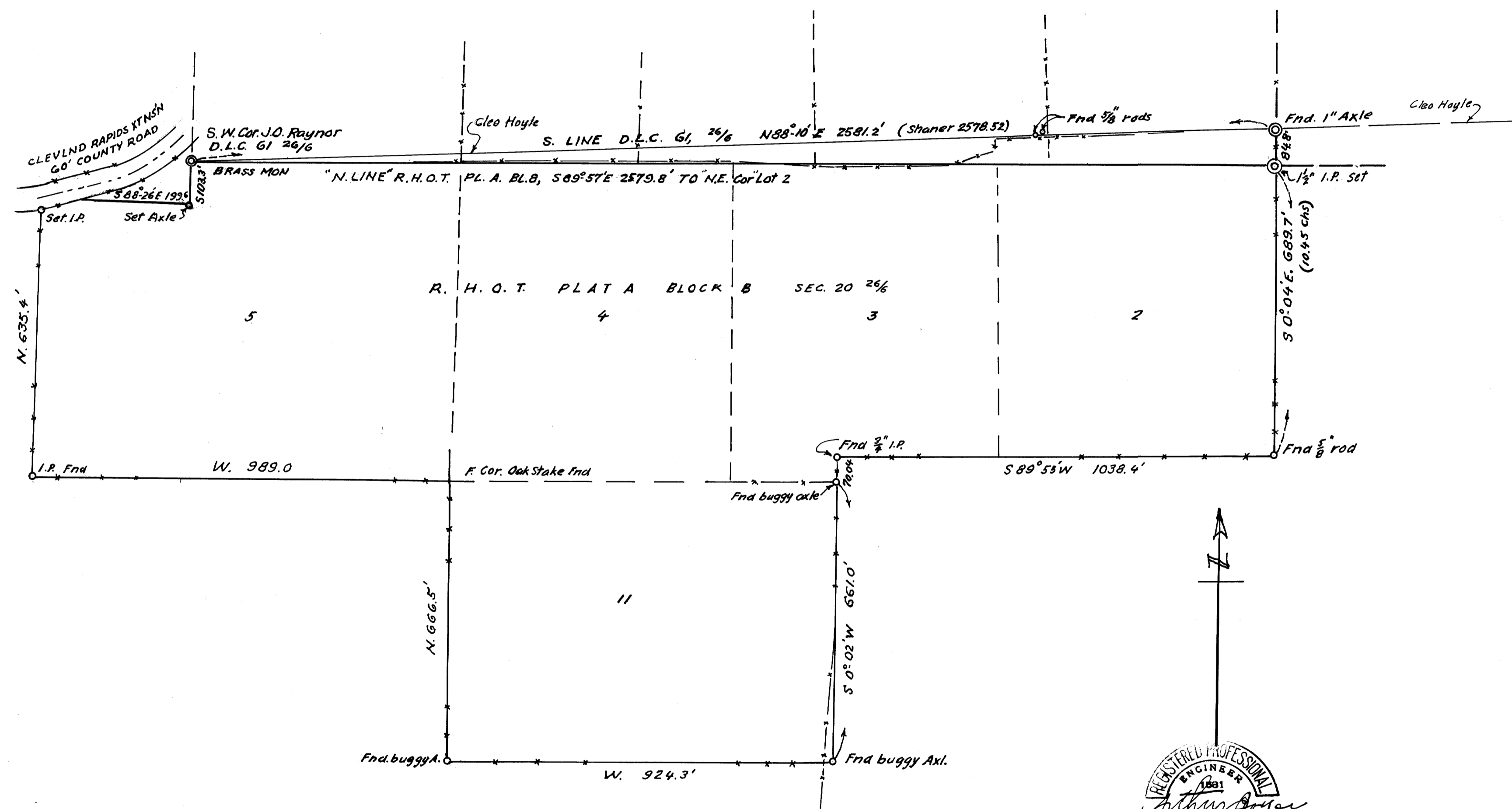


FILED
RECEIVED

OCT 9 1970

COUNTY SURVEYOR
DOUGLAS COUNTY, ORE.

CLEO HOYLE Subdivided by D.O. Bryant 1967-1-14-12



LEONARD SMITH
LOTS 2, 3, 4, 5 & 11, R.H.O.Ts. PL. A, BLK. 8.
SEC. 20, T.26 S; R.6 W; W.M.
DOUGLAS COUNTY, ORE.
OCT. 1970. 1" = 200 ft.

COUNTY SURVEYORS FILE DATA
DO NOT REMOVE FROM OFFICE