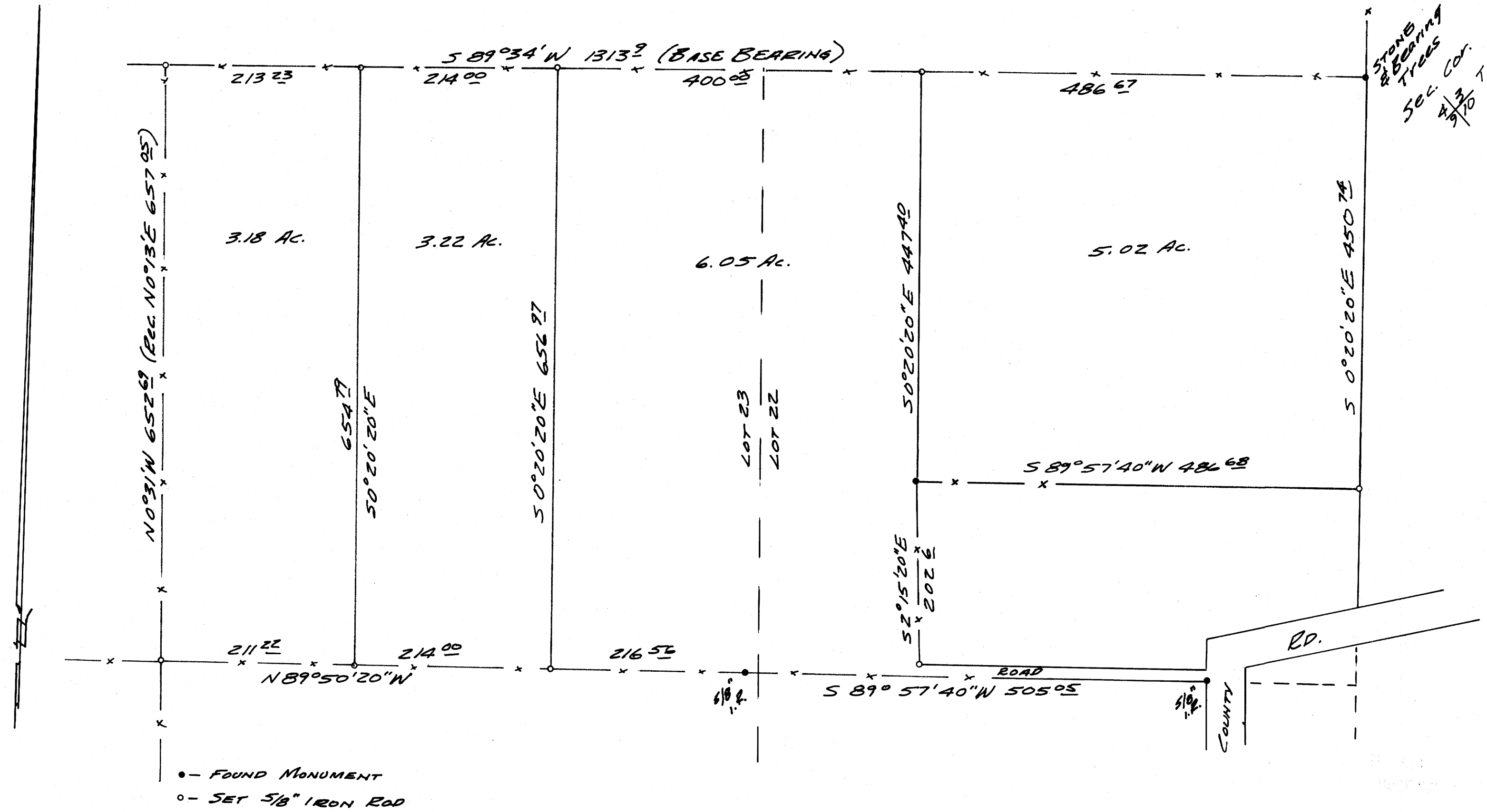


FILED  
RECEIVED

OCT 2 1970

COUNTY SURVEYOR  
DOUGLAS COUNTY, ORE.

M 40-42



STONE  
& BEARING  
TREES  
SEC. COR.  
4/3 T 275  
9/10 E 7th N.M.

- - FOUND MONUMENT
- - SET 5/8" IRON ROD

SURVEY FOR DEED DESCRIPTIONS  
IN THE NORTH 1/2 OF LOTS 22 & 23  
DOERNER'S ADDN. TO EDEN ORCHARDS  
SURVEYED FOR E. BIEBER  
by B. ROGERS  
Oct., 1970  
1" = 100'

REGISTERED  
OREGON  
LAND SURVEYOR  
*Bruce R. Rogers*  
JULY 24 1964  
BRUCE R. ROGERS  
660

COUNTY SURVEYORS FILE DATA  
DO NOT REMOVE FROM OFFICE

M 40-42