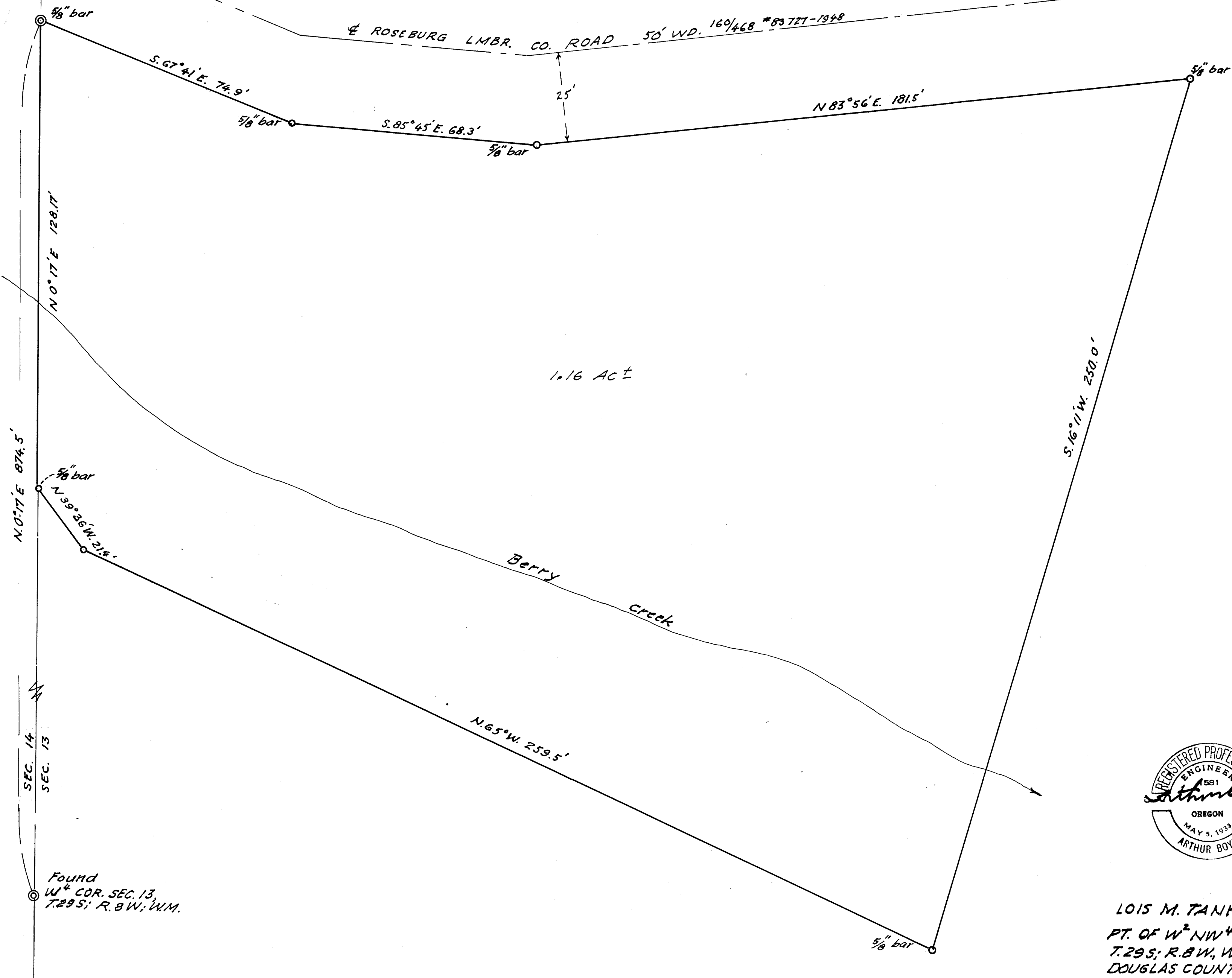


Found
NW Cor Sec. 13,
T29 S; R8 W; WM

FILED *LL*
RECEIVED
OCT 2 1970
COUNTY SURVEYOR
DOUGLAS COUNTY, ORE



1.16 Ac ±

Berry
Creek



LOIS M. TANKERSLEY,
PT. OF W² NW⁴ SEC. 13,
T. 29 S; R. 8 W; W. M.
DOUGLAS COUNTY, ORE
SEPT. 1970 1" = 20 FT. ±

COUNTY SURVEYORS FILE DATA
DO NOT REMOVE FROM OFFICE

M 40 - 41

M 40 - 41