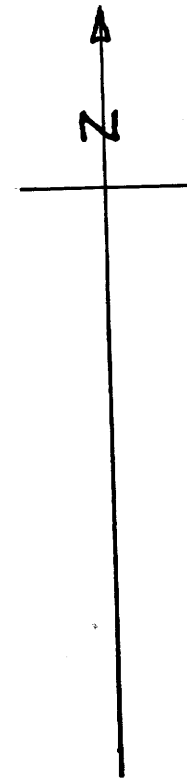
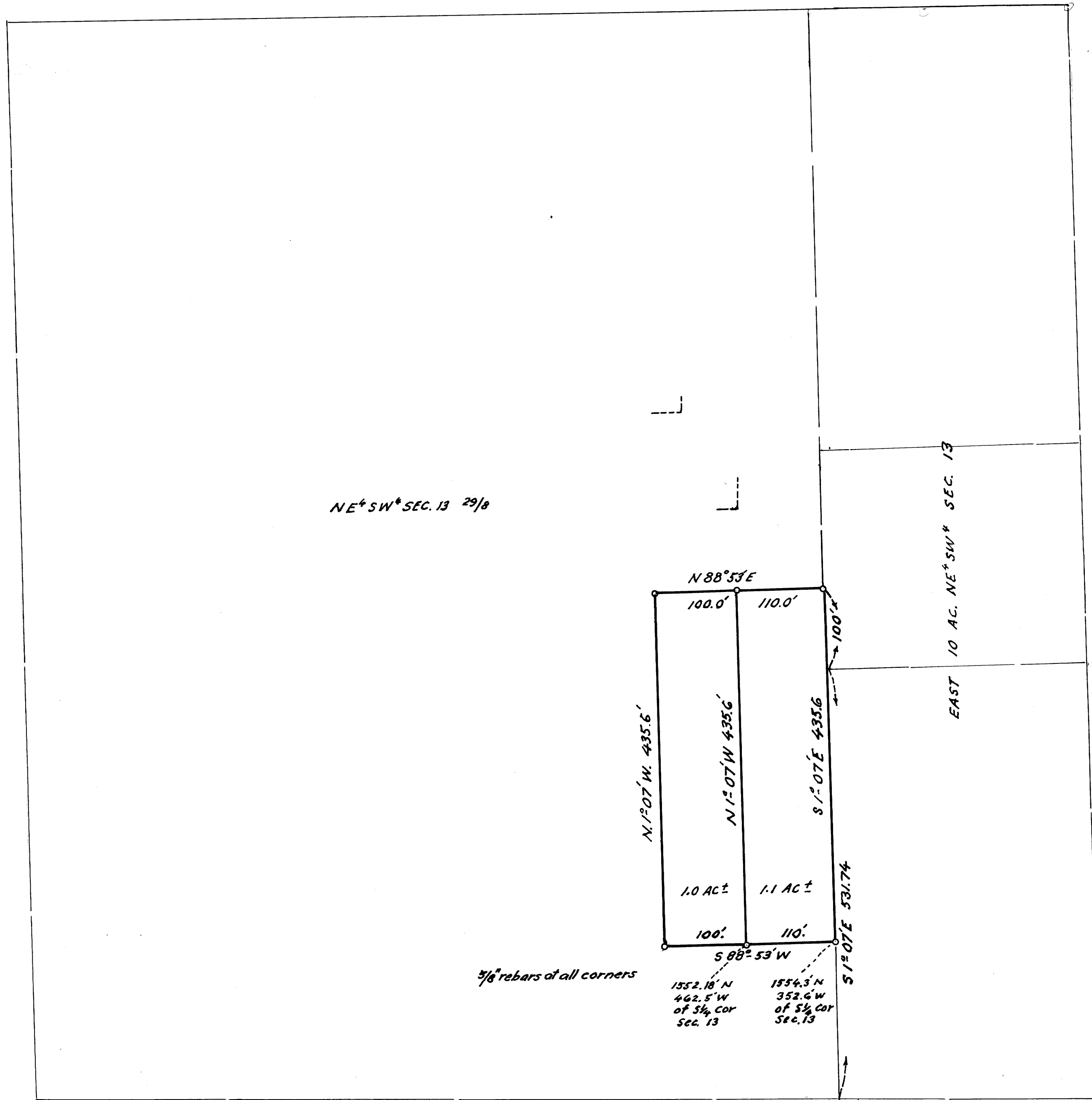


FILED  
RECEIVED

OCT 2 1970

COUNTY SURVEYOR  
DOUGLAS COUNTY, ORE.

M 40 - 40



LOIS M. TANKERSLEY  
 ACREAGE IN NE 1/4 SW 1/4 SEC. 13,  
 T29S; R8W; WIL. MER.,  
 DOUGLAS COUNTY, ORE  
 SEPT. 1970 1" = 100' ft.

COUNTY SURVEYORS FILE DATA  
 DO NOT REMOVE FROM OFFICE

M 40 - 40