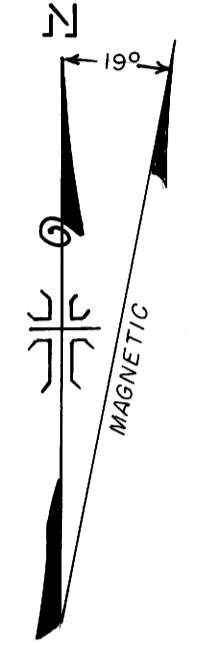
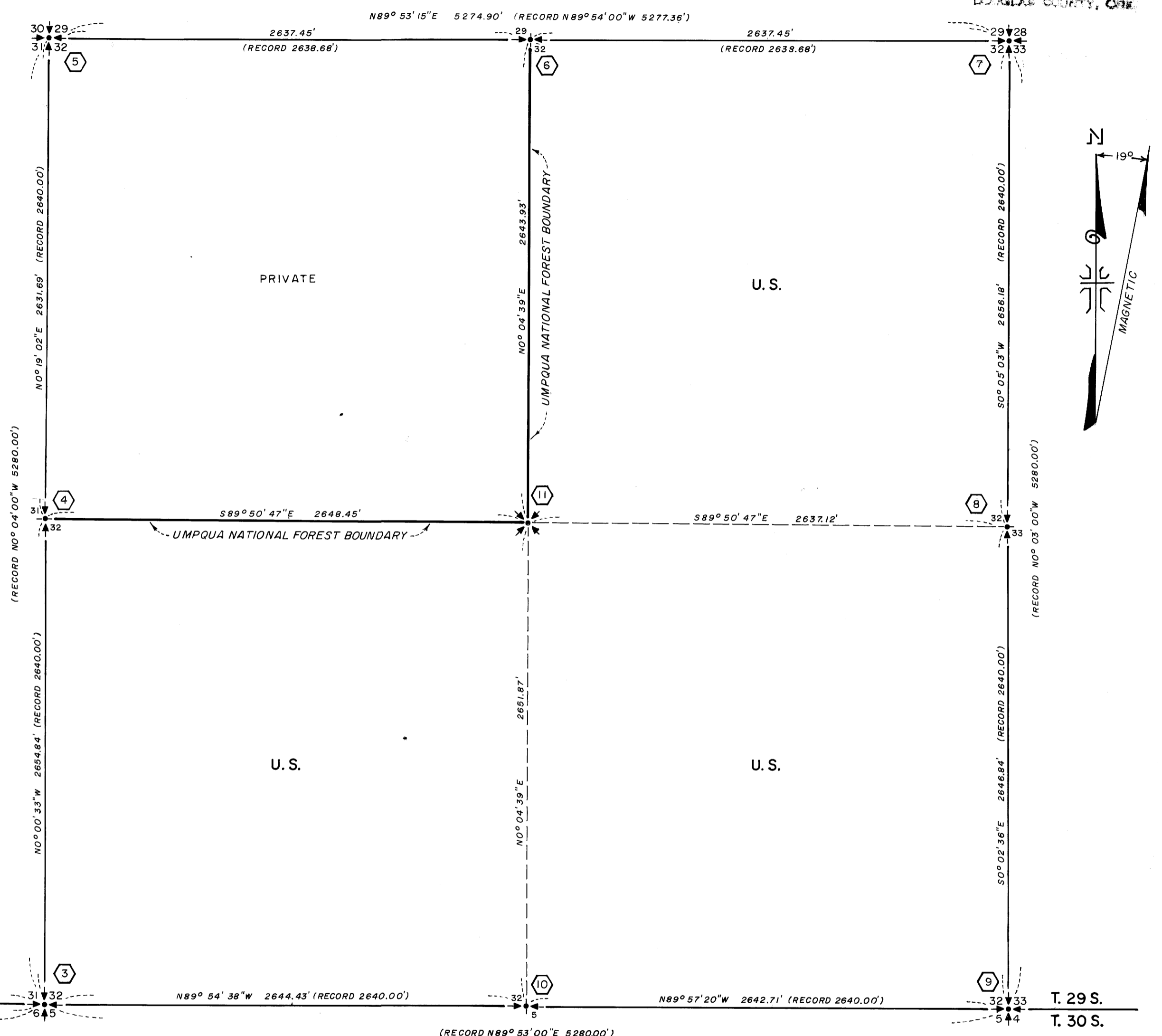


DESCRIPTION OF MONUMENTS AND ACCESSORY TIES

FILED
RECEIVED
JUL 27 1970
COUNTY SURVEYOR
DOUGLAS COUNTY, ORE.

- 1. FOUND GENERAL LAND OF FICE BRASS CAP ON 3" DIA. PIPE
STAMPED:
FROM WHICH BEARS:
ORIGINAL B.T. 18" OAK, NOW STUMP, N8°E 47.5'
16" DOUG. FIR, N73°E 17.5' (SHOWS RECENT SCAR)
ORIGINAL B.T. A 12" OAK, NOW A 17" STUMP, S 89°E 118.8'
1904 18" DOUG. FIR, S 9°E 13.0' (SHOWS RECENT SCAR)
ORIGINAL 30" PINE NOW DOWN AND BURNED, S 8°W, 24.4'
1904 B.T. A 10" DOUG. FIR, S 41°W 33.0' (SHOWS RECENT SCAR)
ORIGINAL B.T. A 18" OAK, NOW ROTTED OUT, N 70°W 37.0'
16" DOUG. FIR, N 44°W 26.8' (SHOWS RECENT SCAR)
- 2. FOUND 1" DIA. IRON ROD AND REPLACED IT WITH A 2" DIA. PIPE WITH 2 1/2" BRASS DISK
STAMPED:
FROM WHICH BEARS:
12" DIA. FIR, N 4°E 17.4', SHOWS GOOD SCAR.
ORIGINAL B.T. FOUND 30" STUMP, S 88°E 31.8'
14" DIA. ALDER, S 66°E 2.2' SCRIBES VISIBLE.
21" SUGAR PINE, S 15°W 8.7'
14" FIR, N 75°W 18.6'
ORIGINAL B.T. FOUND 30" FIR STUMP N 70°W 21.8'
- 3. FOUND 1 1/4" DIA. IRON BOLT. ALSO FOUND ORIGINAL STONE WITH 5 NOTCHES ON WEST SIDE. REPLACED 1 1/4" BOLT WITH 2" DIA. PIPE WITH 2 1/2" BRASS DISK
STAMPED:
FROM WHICH BEARS:
ORIGINAL B.T. A 30" MADRONA, BLOWN DOWN, N 88°E 32.9'
ORIGINAL B.T. A 22" WHITE FIR, BLOWN DOWN, S 38°E 32.9'
12" WHITE FIR, SCRIBES VISIBLE, S 11°W, 18.9'
9" BLACK OAK B.T., N 85°W 9.4'
ORIGINAL B.T. A 24" FIR, NOW A STUMP (LOGGED OFF) N 61°W, 25.1'
- 4. FOUND 18" X 12" X 8" BASALT STONE IN PLACE WITH 1/4" SCRIBED ON WEST FACE. FOUND ORIGINAL B.T. A 14" MADRONA DOWN ON FACE AND ROTTEN S 78°E 11.2'. REPLACED STONE WITH A 2" DIA. PIPE WITH A 2 1/2" BRASS DISK.
STAMPED:
FROM WHICH BEARS:
SCRIBED NEW B.T. A 9" FIR SCRIBED (1/4 S 32 BT) - N 83 1/2° 50.5'
SCRIBED NEW B.T. A 8 1/2" MADRONA SCRIBED (1/4 S 31 BT) - N 87°W 40.2'
BURIED ORIGINAL STONE MONUMENT ALONGSIDE PIPE.
- 5. FOUND 1" DIA. IRON PIPE WITH 2 1/2" BRASS DISK
STAMPED:
FROM WHICH BEARS:
6" MADRONA DOWN ON FACE N 8°E 24.4'
17" CEDAR, SCRIBES VISIBLE, N 44°E 46.4'
ORIGINAL B.T. 9" DIA. MADRONA, SCRIBES VISIBLE S 81°E 18.5'
9" FIR, SCRIBES VISIBLE, S 65°E 9.6'
ORIGINAL B.T. 12" DIA. MADRONA, SCRIBES VISIBLE S 81°W 20.5'
ORIGINAL B.T. 17" DIA. FIR, SHOWS GOOD SCAR, N 21°W 17.2'
- 6. SET 2" DIA. PIPE WITH 2 1/2" BRASS DISK
STAMPED:
FROM WHICH BEARS:
SCRIBED NEW B.T. A 6" DIA. MADRONA SCRIBED (1/4 S 29 BT) N 13 1/2° E 37.1'
SCRIBED NEW B.T. A 15" DIA. MADRONA SCRIBED (1/4 S 32 BT) S 71 1/4° E 43.6'
- 7. FOUND 1" IRON PIPE WITH 1/2" DIA. BRASS DISK
STAMPED:
FROM WHICH BEARS:
25" WHITE FIR B.T., SCRIBES VISIBLE N 25 1/2° E 42.7'
ORIGINAL B.T., A 15" WHITE FIR, SHOWS GOOD SCAR, S 66°E 27.7'
15" CEDAR B.T., SCRIBES VISIBLE, S 28°W 31.8'
ORIGINAL B.T. A 48" DOUG. FIR, SCRIBES FACE VISIBLE, N 35°W 46.0'
- 8. FOUND 1" DIA. IRON PIPE WITH 2 1/2" DIA. BRASS DISK
STAMPED:
FROM WHICH BEARS:
10" DIA. DOUG. FIR, SCRIBES VISIBLE, N 28°E 4.5'
ORIGINAL B.T., A 18" WHITE FIR (BLOWN DOWN) N 48°E 20.5'
13" WHITE FIR B.T., SCRIBES VISIBLE, S 45°W 12.8'
ORIGINAL B.T., A 18" WHITE FIR (BLOWN DOWN) S 58°W 38.9'
FOUND ORIGINAL STONE MONUMENT MARKED 1/4 LYING BESIDE PIPE.
- 9. FOUND 1" DIA. IRON PIPE WITH 2 1/2" DIA. BRASS DISK
STAMPED:
FROM WHICH BEARS:
8" SHASTA FIR B.T., SCRIBES VISIBLE, N 16°W 29.6'
ORIGINAL B.T., A 9" WHITE OAK, SCRIBES VISIBLE, N 38°E 47.5'
ORIGINAL B.T., A 24" DOUG. FIR, SHOWS GOOD SCAR, S 55°E 5.3'
ORIGINAL B.T., A 12" DOUG. FIR, (DOWN) S 28°W 17.8'
16" DOUG. FIR B.T., SCRIBES VISIBLE, S 62°W 41.4'
ORIGINAL B.T., A 16" DOUG. FIR, SHOWS GOOD SCAR, N 81°W 35.0'
- 10. FOUND 24" X 20" X 8" IRONSTONE WITH 1/4" SCRIBED ON NORTH FACE SET 2" DIA. PIPE WITH 2 1/2" BRASS DISK
STAMPED:
FROM WHICH BEARS:
ORIGINAL B.T., A 30" STUMP LYING ON FACE, SHOWS GOOD SCAR, N 57°W 10.6'
ORIGINAL B.T., A 30" FIR (BLOWN DOWN) SHOWS GOOD SCAR, S 34°W 25.7'
SCRIBED NEW B.T., A 8" FIR SCRIBED (1/4 S 32 BT) N 70 1/4° E 36.3'
SCRIBED NEW B.T., A 6" WHITE FIR SCRIBED (1/4 S 31 BT) S 64°W 14.9'
LEFT ORIGINAL STONE MONUMENT BESIDE NEW MONUMENT.
- 11. SET 2" DIA. IRON PIPE WITH 2 1/2" DIA. BRASS DISK
STAMPED:
FROM WHICH BEARS:
SCRIBED 17" DOUG. FIR (C 1/4 S 32 BT) S 13 1/2° E 27.9'
SCRIBED 15" DOUG. FIR (C 1/4 S 32 BT) S 86°W 20.5'



T. 29 S. 36 31 18 32 33 34 35 36 37 38 39 40 41 42 43 44 45 46 47 48 49 50 51 52 53 54 55 56 57 58 59 60 61 62 63 64 65 66 67 68 69 70 71 72 73 74 75 76 77 78 79 80 81 82 83 84 85 86 87 88 89 90 91 92 93 94 95 96 97 98 99 100
T. 30 S. 1 2 3 4 5 6 7 8 9 10 11 12 13 14 15 16 17 18 19 20 21 22 23 24 25 26 27 28 29 30 31 32 33 34 35 36 37 38 39 40 41 42 43 44 45 46 47 48 49 50 51 52 53 54 55 56 57 58 59 60 61 62 63 64 65 66 67 68 69 70 71 72 73 74 75 76 77 78 79 80 81 82 83 84 85 86 87 88 89 90 91 92 93 94 95 96 97 98 99 100

I, J.A. HOFFBUHR, A REGISTERED LAND SURVEYOR IN THE STATE OF OREGON, HEREBY CERTIFY THAT THIS PLAT AND THE NOTES HEREON, OR ATTACHED, ARE A CORRECT REPRESENTATION OF A SURVEY I PERFORMED DURING JUNE AND JULY, 1970, FOR THE U.S. FOREST SERVICE, IN ACCORDANCE WITH THE STATUTES OF THE STATE OF OREGON AND THE ARTICLES OF MY CONTRACT.

J.A. Hoffbuhr
J. A. HOFFBUHR
REGISTERED LAND SURVEYOR
OREGON LICENSE 222

COUNTY SURVEYORS FILE DATA
DO NOT REMOVE FROM OFFICE

REGISTERED
OREGON
LAND SURVEYOR
J.A. Hoffbuhr
NOVEMBER 7 1947
J. A. HOFFBUHR
222

PLAT OF SURVEY
LOCATED IN
SECTION 32, T.29 S., R.1 W., W.M.
DOUGLAS COUNTY, OREGON
FOR
THE UNITED STATES DEPARTMENT OF AGRICULTURE
UMPQUA NATIONAL FOREST
CONTRACT NO. 002848
J. A. HOFFBUHR, REG. L.S. MEDFORD, OREGON
SCALE: 1" = 500' JULY 2, 1970
BASIS OF BEARING BY SOLAR OBSERVATION
TILLER LAND SURVEY NO. 4
FIELD BOOKS NO'S 1 & 2 OF 4

4-070 M 4

FILE M 40 - 4

SURVEY NARRATIVE TO COMPLY WITH PARAGRAPH 209.250
OREGON REVISED STATUTES

SURVEY FOR: The United States Department of Agriculture
Umpqua National Forest
Contract No. 002848
Roseburg, Oregon

LOCATION: Survey located in Sections 31 and 32, Township 29
South, Range 1 West, Willamette Meridian, Douglas
County, Oregon.

PURPOSE: To re-establish the lost corners along the South
line of Section 31 and the perimeter of Section 32,
also to establish the Center One Quarter (1/4) of
Section 32 and to establish the North Center and
the West Center One Quarter (1/4) lines, these
lines to be surveyed and posted as boundaries of
the Umpqua National Forest.

PROCEDURE: Two Tellurometer Control Base Stations were established
on a ridge, Southeasterly of the Umpqua River. One in the Northwest
One Quarter (1/4) of Section 26 and one in the Northwest One Quarter
(1/4) of Section 35 of the same Township and Range. Eccentric points
were established near each of the Sections and Quarter Corners. The
distances of these spider lines were determined by double tellurometer
measurements and the angles were measured with a T-2 Wild Theodolite.
The angles were measured by turning two directs and two indirects of
the angle and the horizon closure.

A double traverse was run from each eccentric point to the
corners for ties. The distances between the found corners were
obtained by co-ordinate inverse computations.

The bearings for this survey are derived from 3 sets of solar
observations, each set being composed of one direct and one indirect
solar sighting with the T-2 Theodolite. The difference between the
three sets was negligible, therefore, the mean of the three sets was
used for the purpose of this survey.

The information regarding the status of each corner found and
those that were re-established is shown individually on the attached
certified copy of the survey.

The said Center Quarter lines also being the Umpqua National
Forest Boundary were established in the field as indicated on the
map and posted and marked in accordance with the United States Forest
Service requirements.

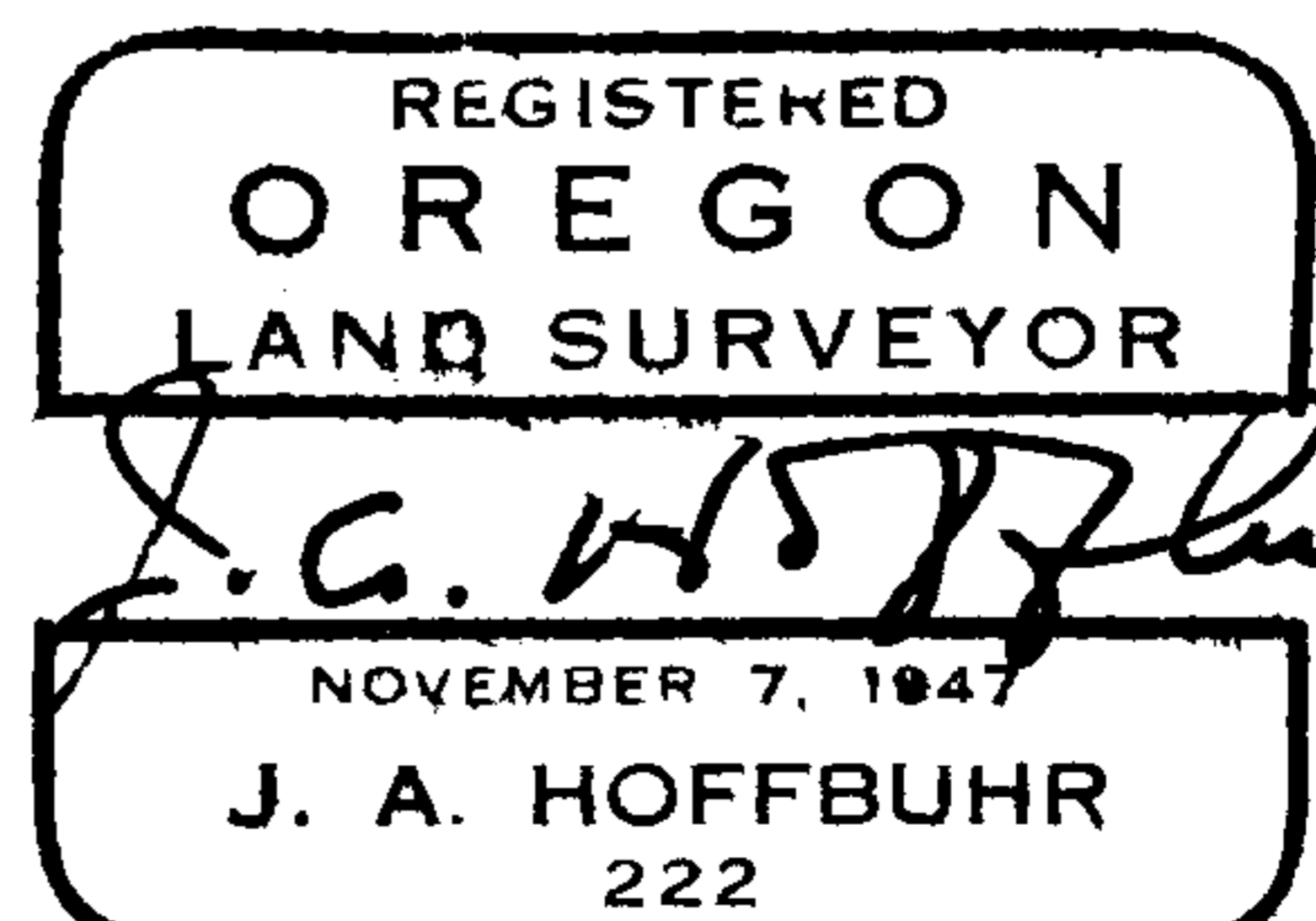
Sufficient information for corner location was found at all the
locations, except the North One Quarter (1/4) Corner of Section 32.
This corner location was established by a single proportionate
measurement as shown.

The bearing trees both old and new were also marked with the
United States Forest Service Bearing Tree Marking Plate in accordance
with the Forest Service requirements.

FILED *ly*
July 24, 1970
RECEIVED

JUL 27 1970

COUNTY SURVEYOR
DOUGLAS COUNTY, ORE



J. A. Hoffbuhr C.S. File 55 / 158
Registered Land Surveyor

File M 40 + 4