

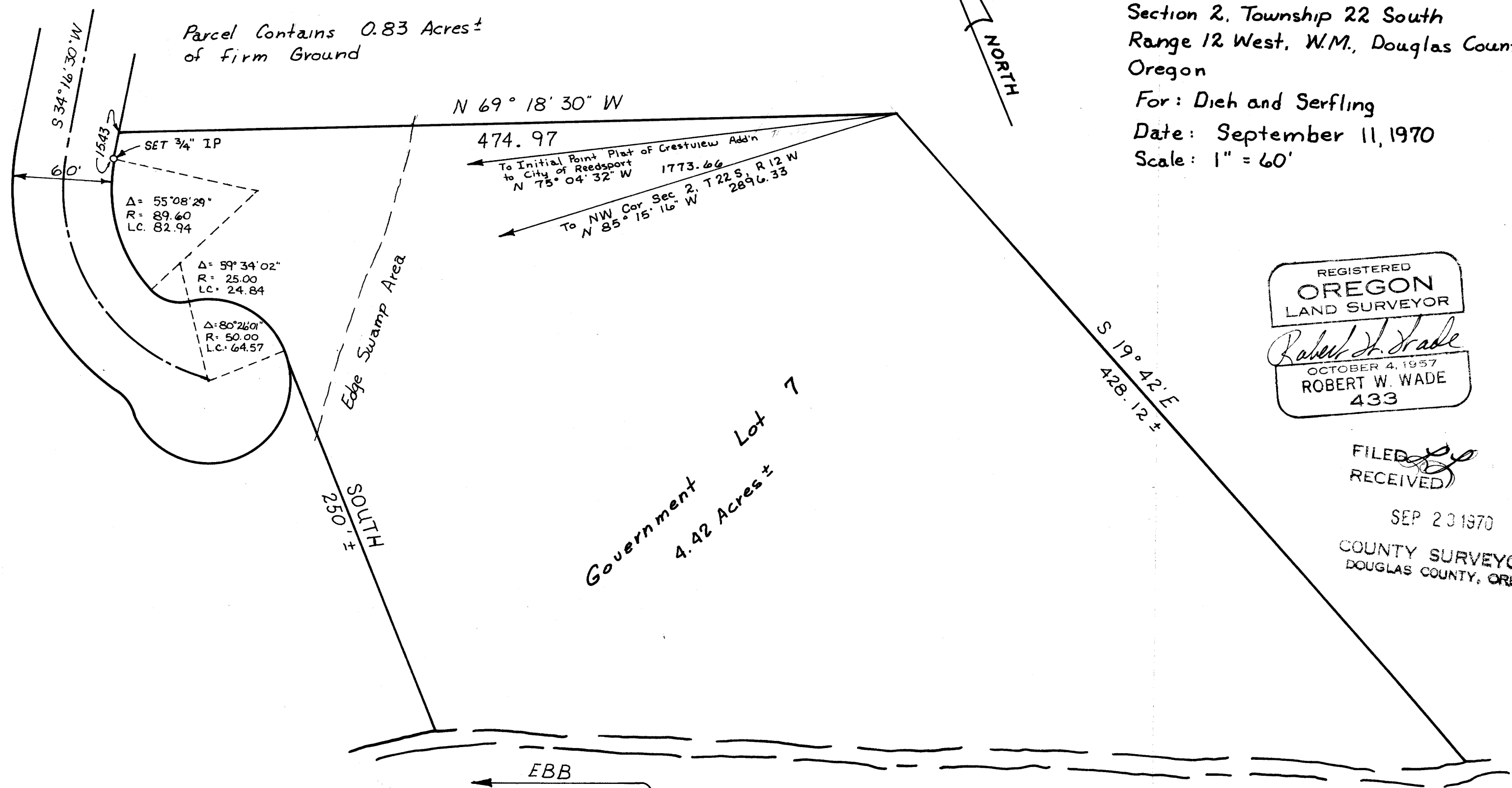
M 40-34

PROPERTY SURVEY

A tract of Land in Government Lot 7,-6
Section 2, Township 22 South
Range 12 West, W.M., Douglas County
Oregon

For: Dieh and Serfling
Date: September 11, 1970
Scale: 1" = 60'

Parcel Contains 0.83 Acres±
of Firm Ground

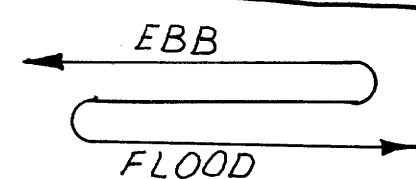


REGISTERED
OREGON
LAND SURVEYOR
Robert W. Wade
OCTOBER 4, 1957
ROBERT W. WADE
433

FILED
RECEIVED

SEP 23 1970
COUNTY SURVEYOR
DOUGLAS COUNTY, ORE.

COUNTY SURVEYORS FILE DATA
DO NOT REMOVE FROM OFFICE



SCHOFIELD CREEK

Revised September 17, 1970

| | |
|--|---|
| A MELAN GESFORD ARCHITECTS COMMUNITY 5TH & HIGHLAND | C FRICHSEN ENGINEER PLANNERS COOS BAY, OREGON |
|--|---|

M 40-34