

*SURVEY FOR DEED DESCRIPTION
IN SEC.S 9 & 10, T28S, R6W. W.M.*

**COUNTY SURVEYORS FILE DATA
DO NOT REMOVE FROM OFFICE**

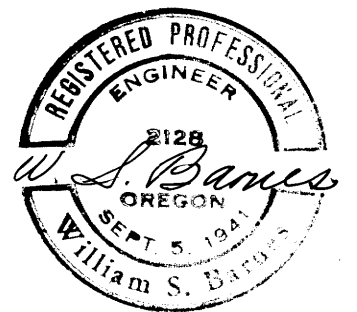
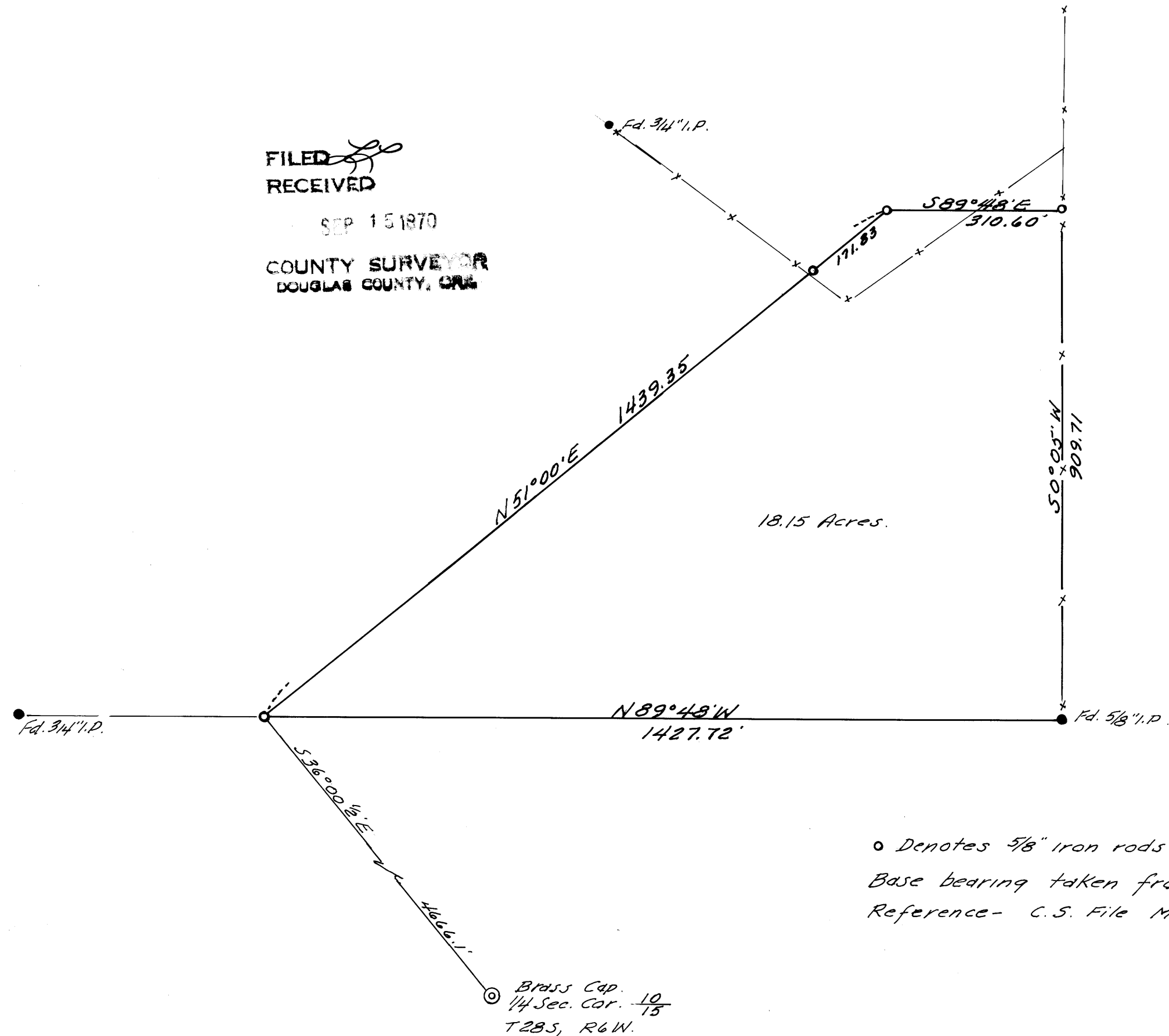
*SURVEYED FOR- ROY WELLS
SURVEYED BY- W. S. BARNES*

*SEPT. 1970
SCALE 1"=200'*

FILED
RECEIVED

SEP 15 1970

**COUNTY SURVEYOR
DOUGLAS COUNTY, ORE**



*o Denotes 5/8" iron rods set.
Base bearing taken from south prop. line N89°48'W.
Reference- C.S. File M 21-36*