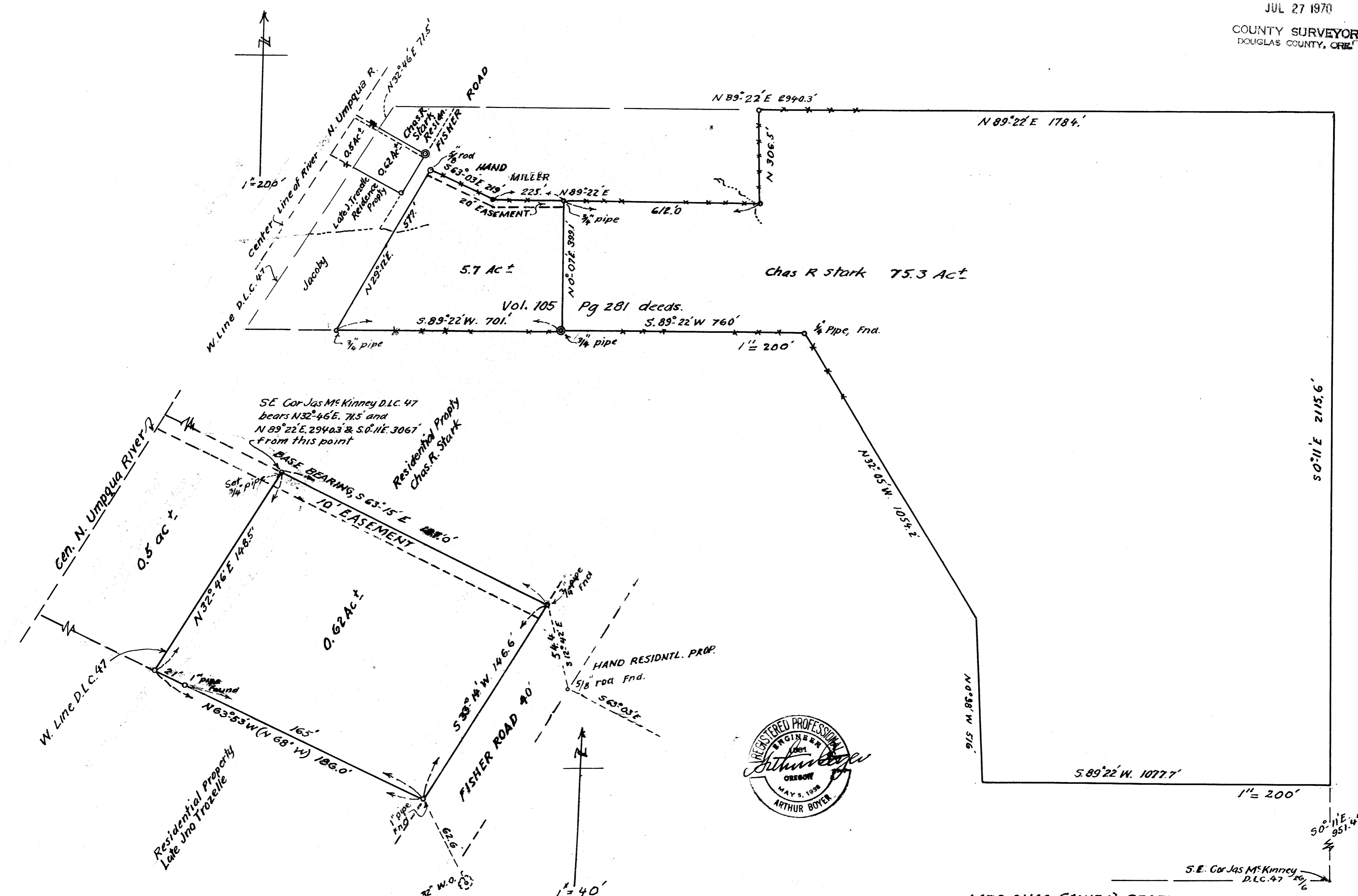


FILED
RECEIVED
JUL 27 1970
COUNTY SURVEYOR
DOUGLAS COUNTY, ORE

M 40-3



MRS CHAS (ANITA) STARK
PT. OF JAS. MCKINNEY D.L.C. 47 & OF SEC. 27 AND SEC. 26
T 26 S. R 6 W; W. M.; DOUGLAS COUNTY, ORE
JULY 1970

COUNTY SURVEYORS FILE DATA
DO NOT REMOVE FROM OFFICE

M 40-3