

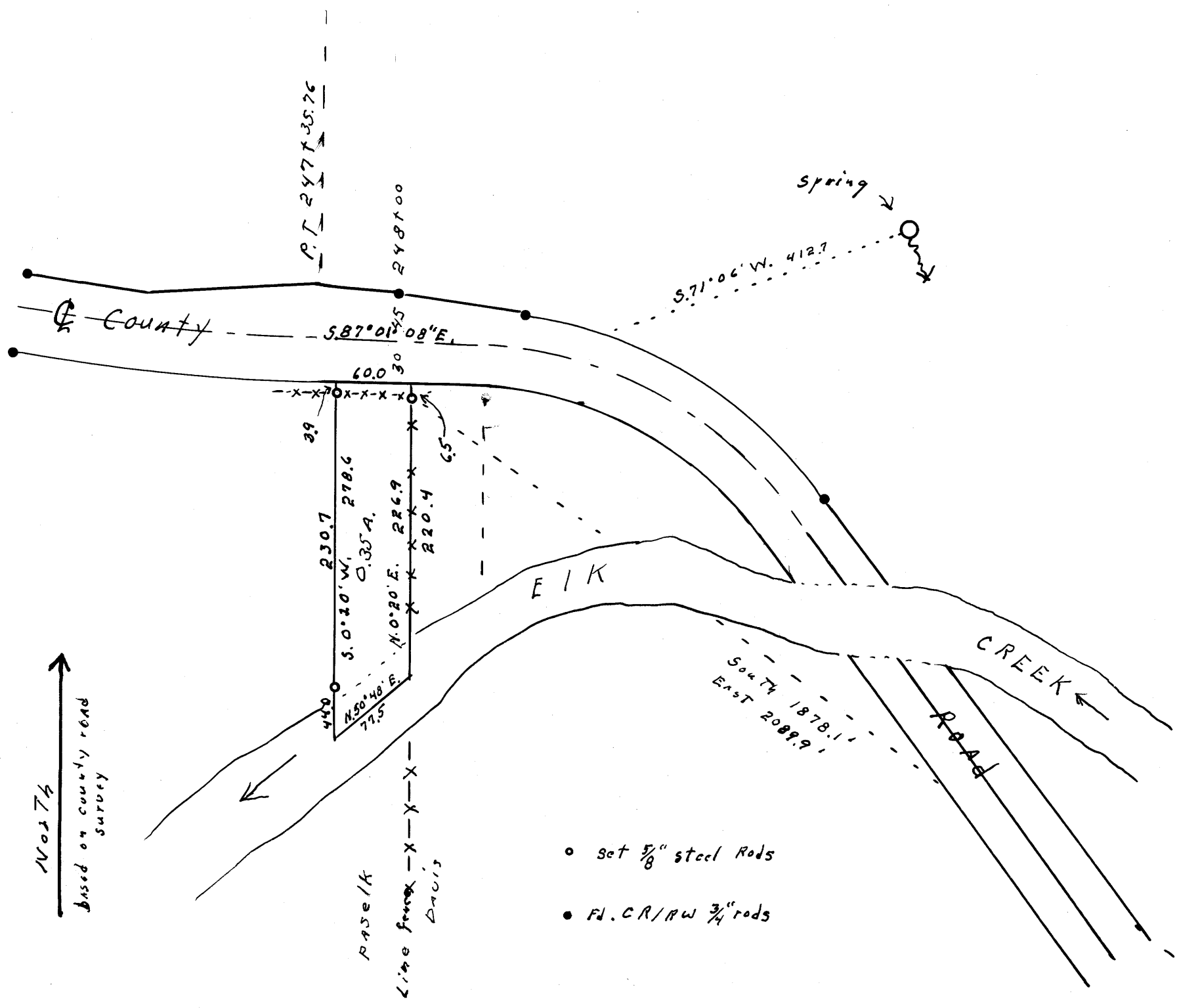
FILED *SL*  
RECEIVED

SEP 10 1970

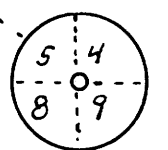
COUNTY SURVEYORS  
OFFICE

M 40 - 29

SURVEY FOR DEED DESCRIPTION  
SE $\frac{1}{4}$  SECT. 5, T. 23 S., R. 4 W. W.M.  
HARRY T. + TERECITA E. PASCIK - YONCALLA  
Scale: 1" = 100'  
Sept. 5, 1970



REGISTERED  
OREGON  
LAND SURVEYOR  
*Wilford N. Haines*  
MAY 7, 1948  
WILFORD N. HAINES  
239



T. 23 S., R. 4 W. W.M.  
F.L. Brass cap set by  
county surveyors  
office in 1958

M 40 - 29