

COUNTY SURVEYORS FILE DATA
DO NOT REMOVE FROM OFFICE

SURVEY TO LOCATE PROPERTY CORNERS
FOR DESCRIPTION-ADDING SPRING & PUMP SITE
IN SECTION 12, T.28 S., R.5 W., W.M., DOUG. CO., ORE.
SURVEYED FOR - GLENN EMRICH
SURVEYED BY - HERBERT L. NORTHCRAFT

SCALE 1" = 100'

AUG, 1970

FILED
RECEIVED

SEP 8 1970

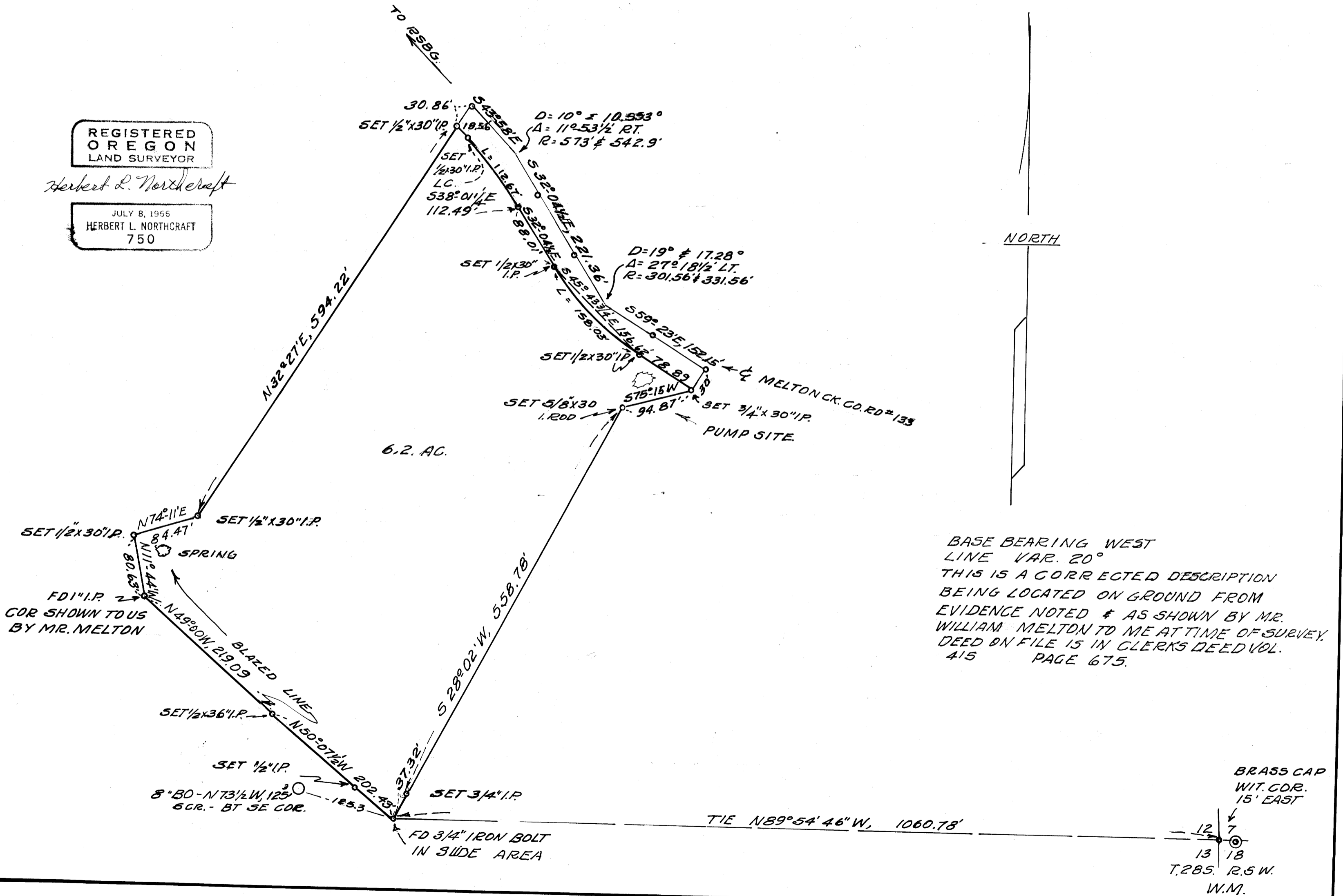
COUNTY SURVEYOR
DOUGLAS COUNTY, ORE.

M 40 - 26

REGISTERED
OREGON
LAND SURVEYOR

Herbert L. Northcraft

JULY 8, 1966
HERBERT L. NORTHCRAFT
750



M 40 - 26