

COUNTY SURVEYORS FILE DATA
DO NOT REMOVE FROM OFFICE

SURVEY FOR DEED DESCRIPTION
IN SECTION 6, T29S, R8W, W.M.

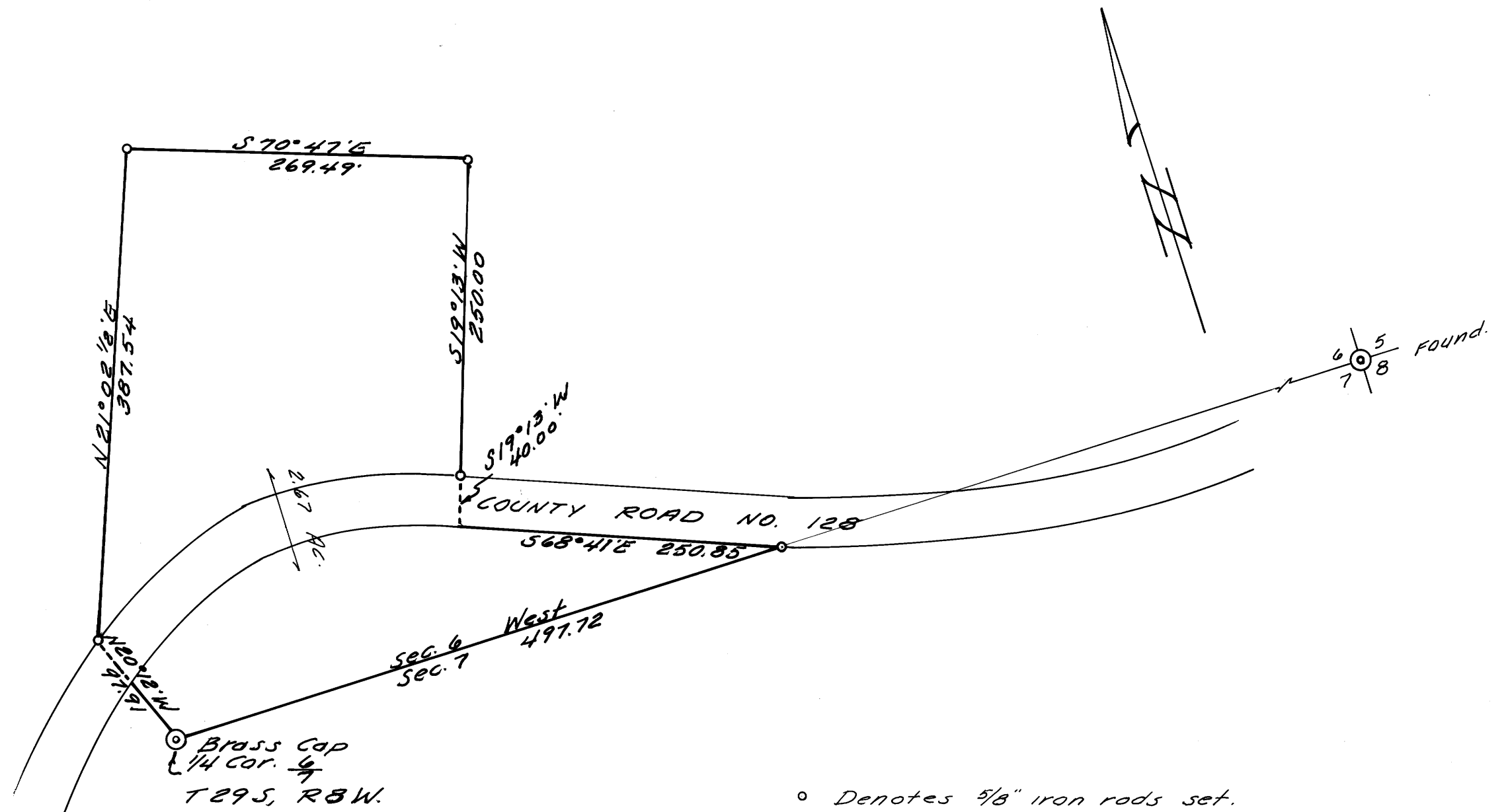
SURVEYED FOR - FRANK KINNAN
SURVEYED BY - W.S. BARNES

AUG. 1970
SCALE - 1" = 100'

FILED
RECEIVED

AUG 28 1970

COUNTY SURVEYOR
DOUGLAS COUNTY, OREGON



o Denotes 5/8" iron rods set.
Base bearing taken from sec. line 6/7.



F M 40 - 20