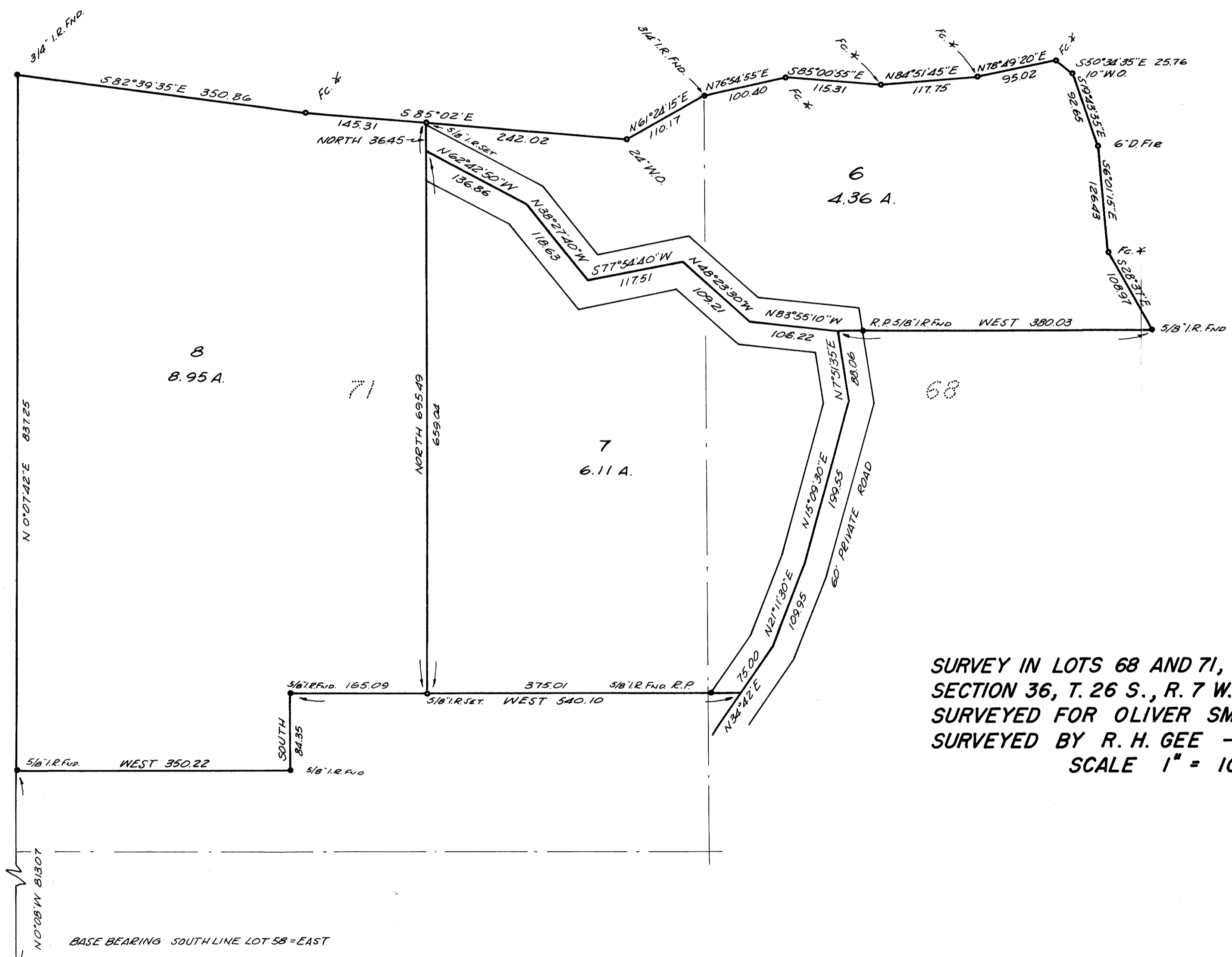


FILED *ll*
 RECEIVED
 JUL 24 1970
 COUNTY SURVEYOR
 DOUGLAS COUNTY, ORE.

M 40-2



SURVEY IN LOTS 68 AND 71, MELROSE ORCHARDS
 SECTION 36, T. 26 S., R. 7 W., W.M.
 SURVEYED FOR OLIVER SMITH
 SURVEYED BY R. H. GEE — JULY, 1970
 SCALE 1" = 100'

EAST 839.00
 WEST 1/4 COR.
 SEC. 36, T. 26 S., R. 7 W., W.M.
 BASE BEARING SOUTH LINE LOT 58 = EAST



COUNTY SURVEYORS FILE DATA
 DO NOT REMOVE FROM OFFICE

M 40-2