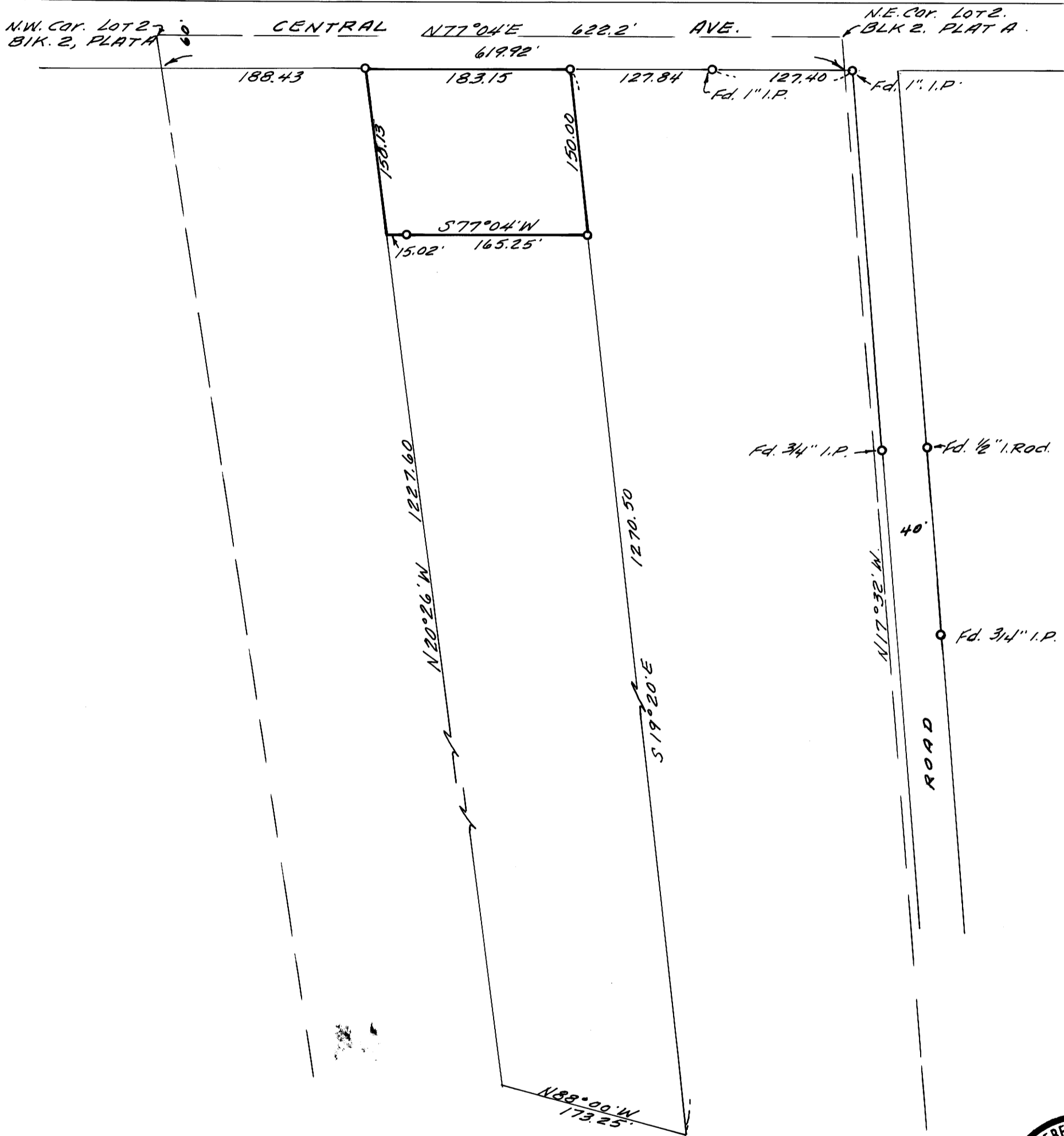


SURVEY TO ESTABLISH PROPERTY CORNERS
 IN LOT 2, BLOCK 2, PLAT "A", S.L. & W. CO.
 DOUGLAS, COUNTY, OREGON.

SURVEYED FOR - PRESS LEE
 SURVEYED BY - W. S. BARNES

AUG. 1970
 SCALE 1"=100'

COUNTY SURVEYORS FILE DATA
 DO NOT REMOVE FROM OFFICE



o 5/8" Iron Rods Set.

Base bearing taken from west line of 40' road.

References - C.S. Map M3-52 & PLAT A subdivision map.

Note: Deed is incorrect in that it designates the N.W. Cor of Lot 2, Block 2 as being on the south side of Central Ave., said cor. is in the center of Central Ave.