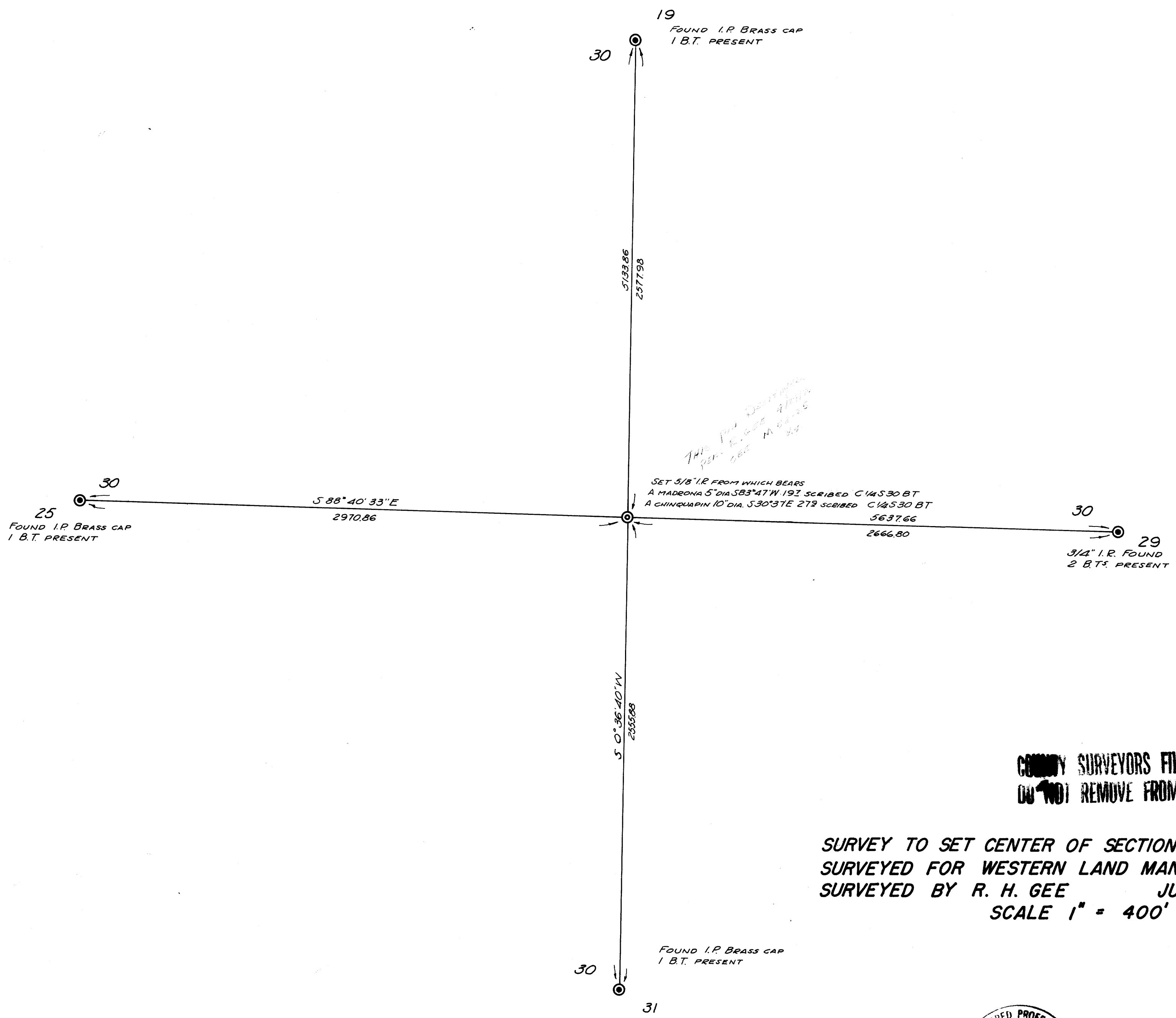


FILED
RECEIVED

AUG 28 1970

COUNTY SURVEYOR
DOUGLAS COUNTY, ORE.



COUNTY SURVEYORS FILE DATA
DO NOT REMOVE FROM OFFICE

SURVEY TO SET CENTER OF SECTION 30, T. 29 S., R. 6 W., W. M.
SURVEYED FOR WESTERN LAND MANAGEMENT, INC.
SURVEYED BY R. H. GEE JULY, 1970
SCALE 1" = 400'



M 40 - 17

M 40 - 17