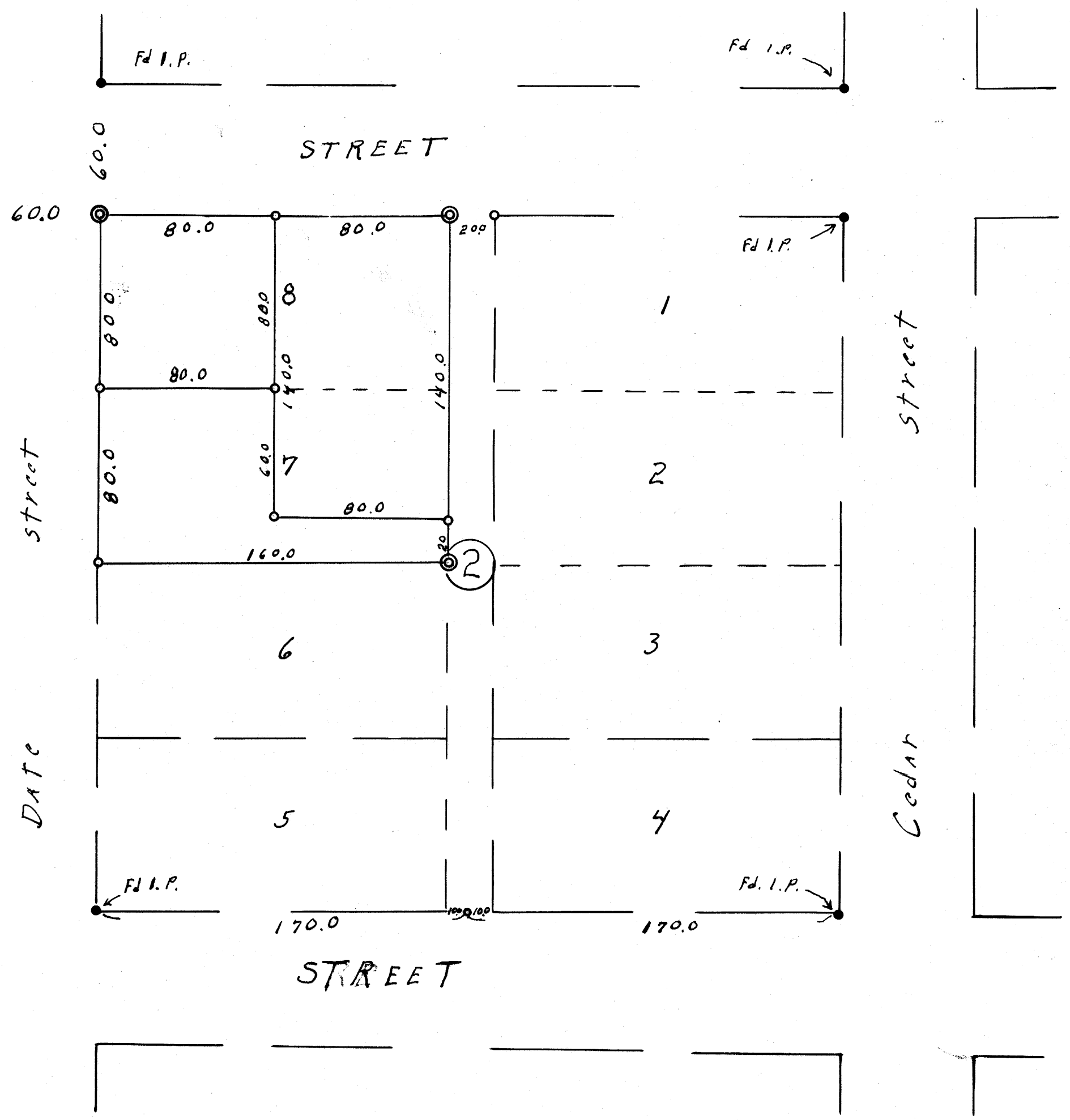


BLOCKS 2+4 SOUTH DRAIN  
 Drain plywood  
 Scale: 1" = 50'  
 Drain, Oregon  
 August 20, 1970

REGISTERED  
 OREGON  
 LAND SURVEYOR  
*Wilford N. Haines*  
 MAY 7, 1948  
 WILFORD N. HAINES  
 239

- Monuments Found
- set 5/8" x 36" steel Rods
- ⊙ Set 3/4" x 36" steel Rods
- 



FILED  
 RECEIVED  
 AUG 26 1970  
 COUNTY SURVEYOR  
 DOUGLAS COUNTY, ORE.

T 22-5 SE NW SEC 17

M 40-15

M 40-15