

COUNTY SURVEYORS FILE DATA
DO NOT REMOVE FROM OFFICE

SURVEY FOR KYES RADIO STATION

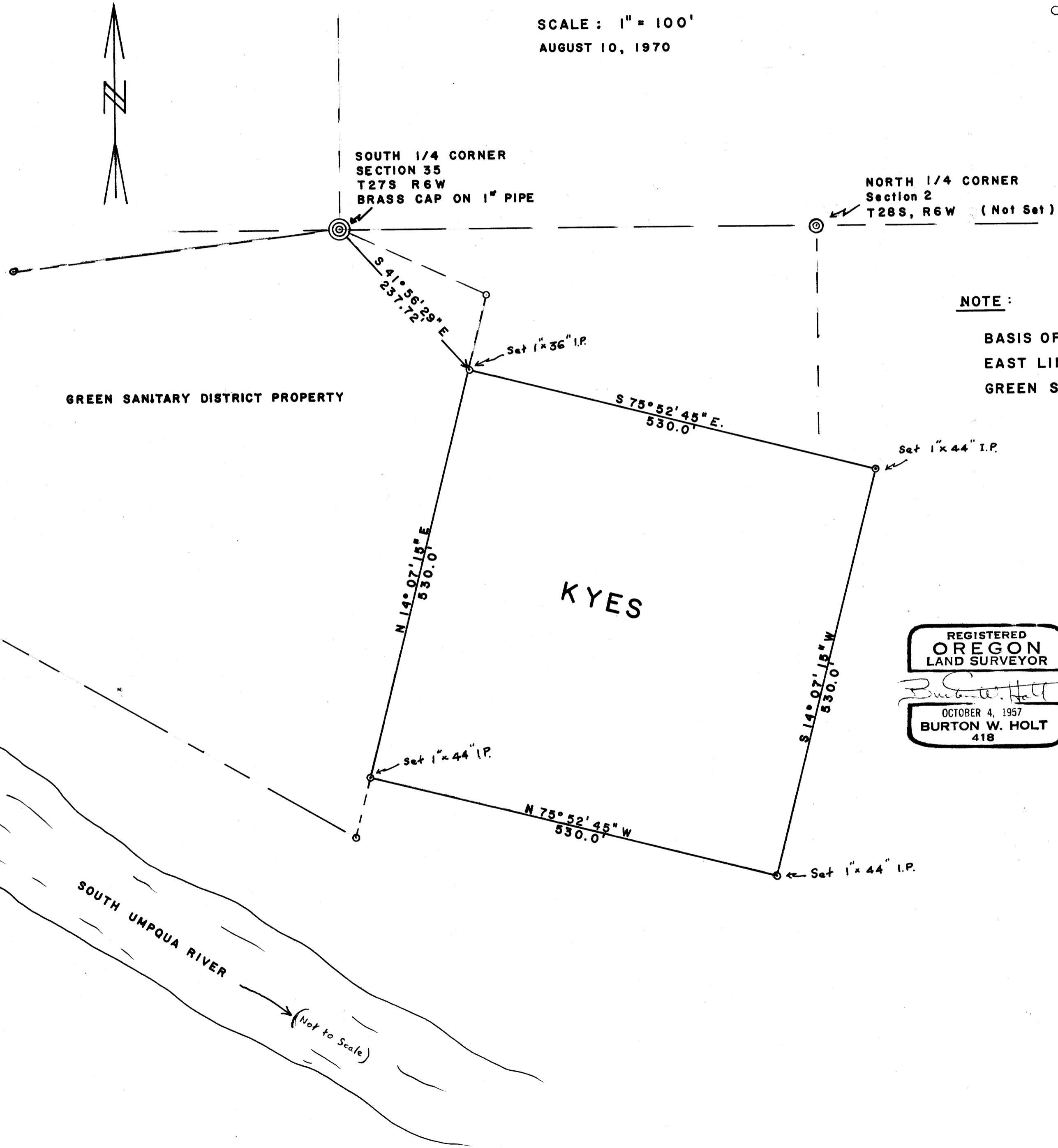
SECTION 2, T28S, R6W W.M.
DOUGLAS COUNTY, OREGON

SCALE: 1" = 100'
AUGUST 10, 1970

FILED *[Signature]*
RECEIVED

AUG 12 1970

COUNTY SURVEYOR
DOUGLAS COUNTY, ORE.



NOTE:

BASIS OF BEARINGS
EAST LINE OF
GREEN SANITARY DISTRICT PROP.

REGISTERED
OREGON
LAND SURVEYOR

Burton W. Holt
OCTOBER 4, 1957
BURTON W. HOLT
418

M 40 - 12

M 40 - 12