

SEC. 33 T30S R6W W.M.
 SURVEY TO ESTABLISH PROPERTY CORRS.
 SURVEYED FOR LARRY & JERRY KLOPE
 SURVEYED JULY 1970 BY N.H. HOOVER SCALE 1"=100'

Set 5/8" Iron Rod — ●
 Fd. 1" Iron Pipe — ○

FILED
 RECEIVED

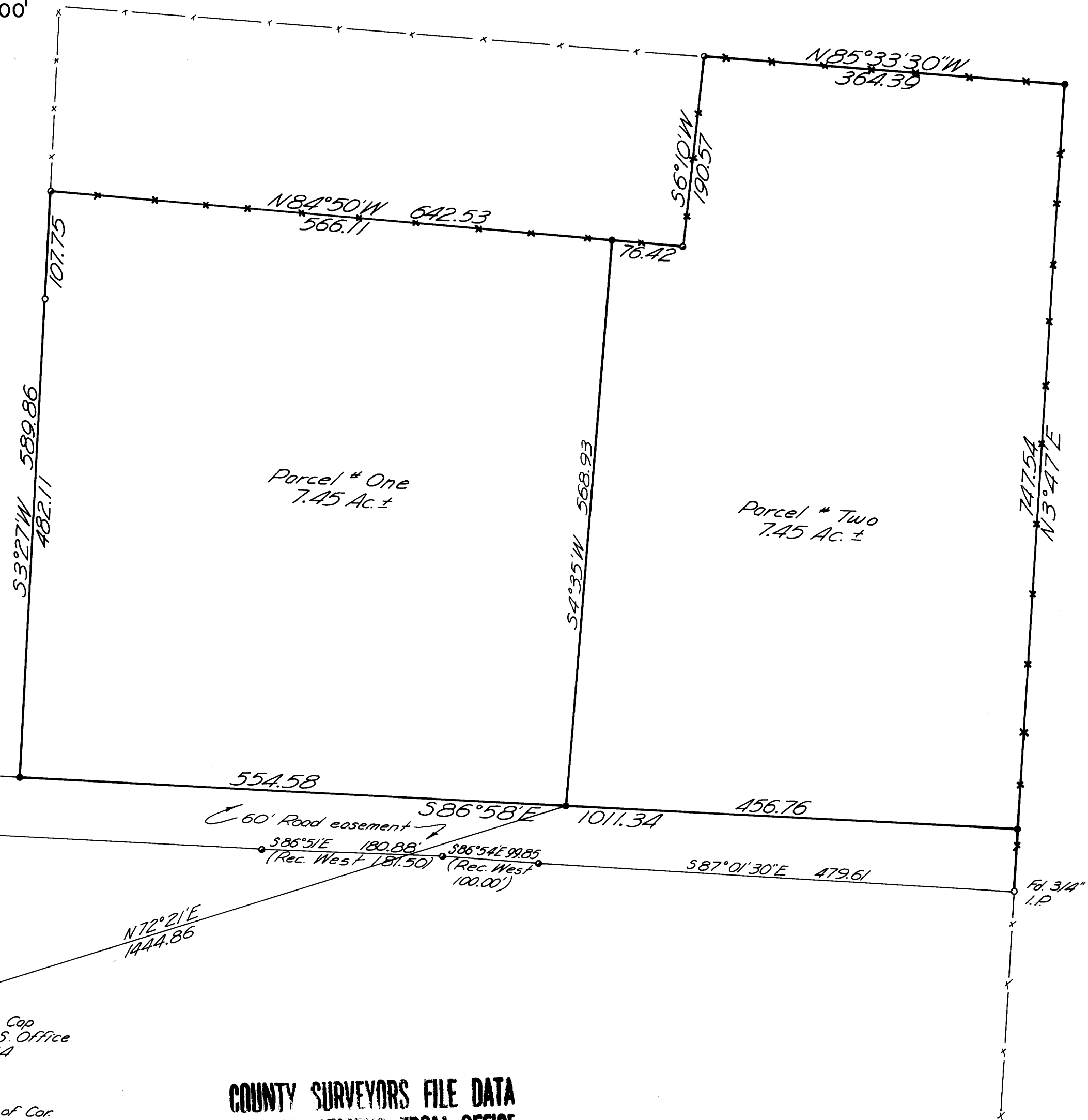
AUG 10 1970

COUNTY SURVEYOR
 DOUGLAS COUNTY, OREGON

East boundary Rd #97

REGISTERED
 OREGON
 LAND SURVEYOR

Nile Hoover
 July 14, 1967
 NILE HOOVER
 799



T30S R6W W.M.
 32 33 Fd. Brass Cap
 5 4 Mrkd. C.S. Office
 T31S R6W W.M. 1954

Brng. Tree 18" Maple 8' West of Cor.
 " " 12" Fir w/tag, no data
 " " 24" Fir scribe chopped out

COUNTY SURVEYORS FILE DATA
 DO NOT REMOVE FROM OFFICE

40-10

01-04 W