

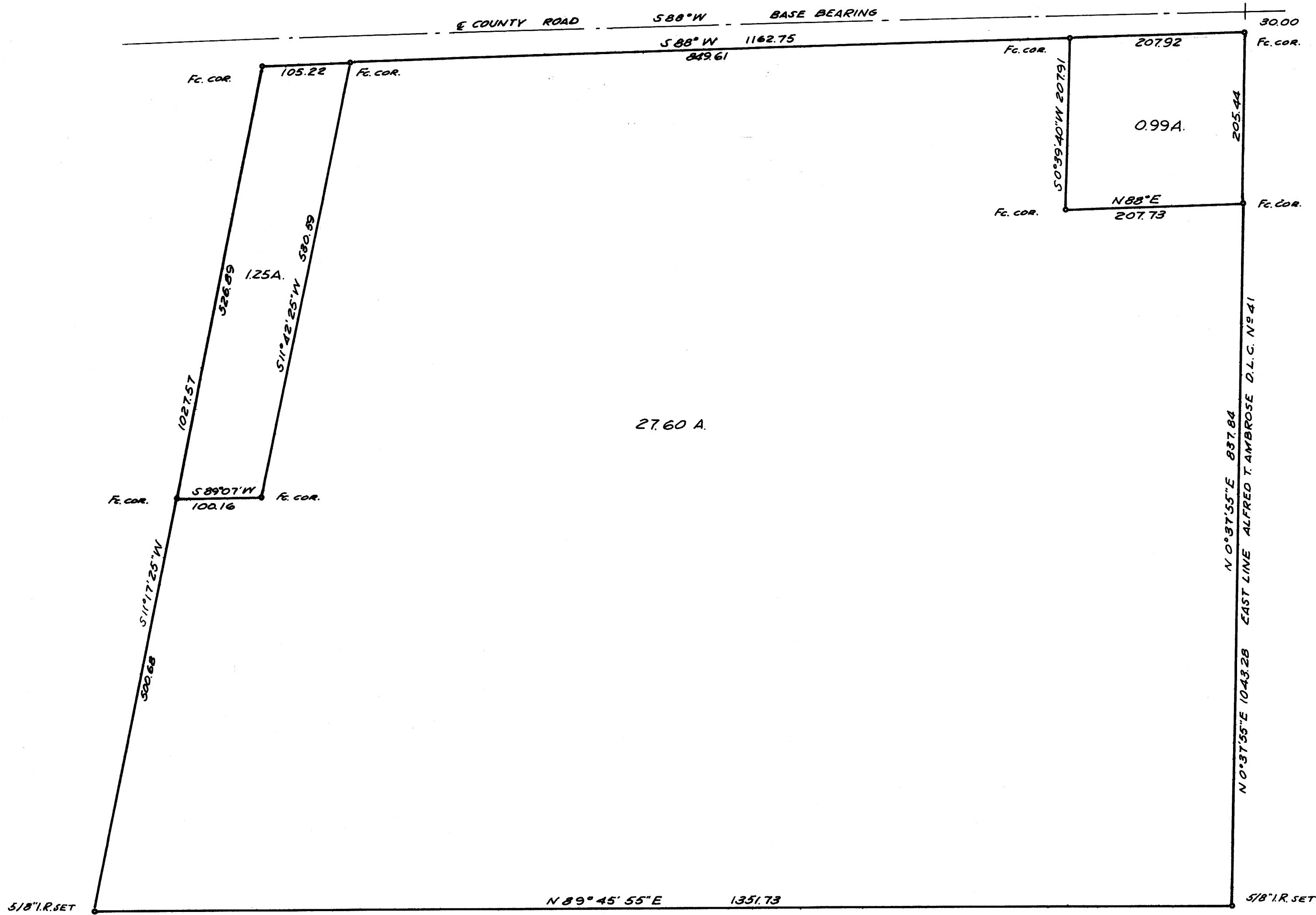
FILED
RECEIVED

JUL 20 1970

COUNTY SURVEYOR
DOUGLAS COUNTY, ORE.

9/12/83
41

NE COR. D.L.C. No. 41



SURVEY IN ALFRED T. AMBROSE D.L.C. No. 41, T. 23 S., R. 5 W., W.M.
 SURVEYED FOR D. R. CHENOWETH
 SURVEYED BY R. H. GEE — DECEMBER, 1969
 SCALE 1" = 100'



COUNTY SURVEYORS FILE DATA
 DO NOT REMOVE FROM OFFICE

3-10 P MAP FILE M. 40-1

FILE M. 40-1