

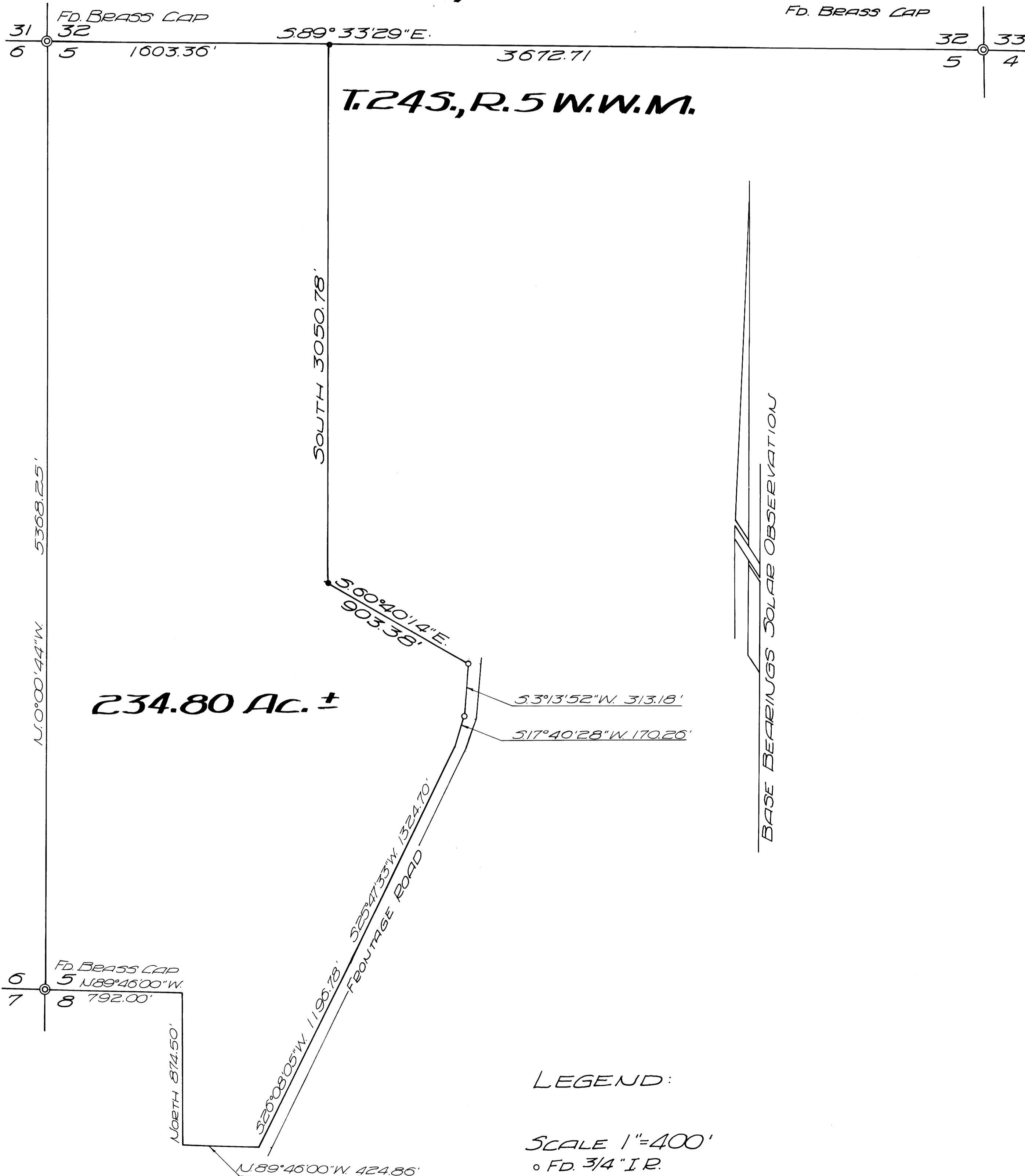
SURVEYED FOR DEED DESCRIPTION LOCATED IN SEC 5 & 8, TWP. 24 S., R. 5, W. W. M. SURVEYED FOR DELMAR RICE OCT. 1969 BY BAUGHMAN & ACKARET INC.

COUNTY SURVEYORS FILE DATA
DO NOT REMOVE FROM OFFICE

72 19 870
COUNTY SURVEYOR
DOUGLAS COUNTY, DRE

REGISTERED
REGIONAL
LAND SURVEYOR
Glenn S. Baughman
JULY 19 1961
GLENN S. BAUGHMAN
585

T. 23 S., R. 5 W. W. M.



234.80 Ac. ±

LEGEND:

SCALE 1" = 400'

- FD. 3/4" I.R.
- SET 5/8" I.R.
- ◎ FD. BRASS CAP