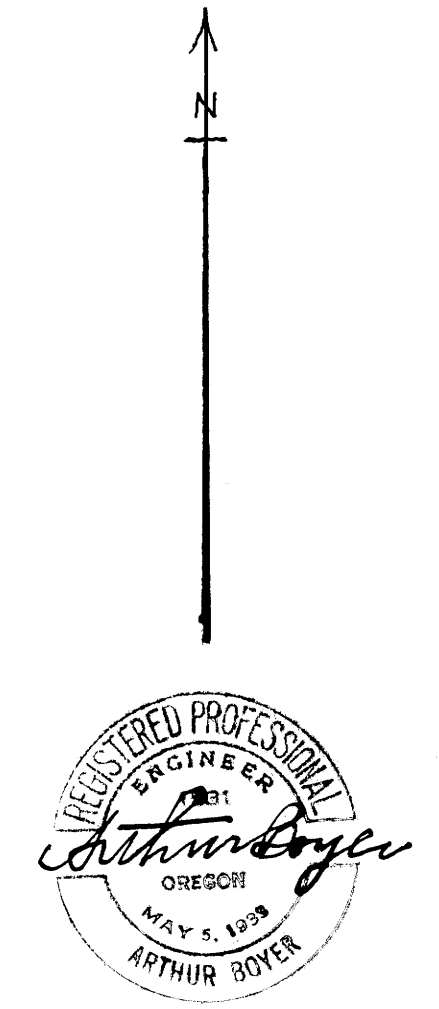
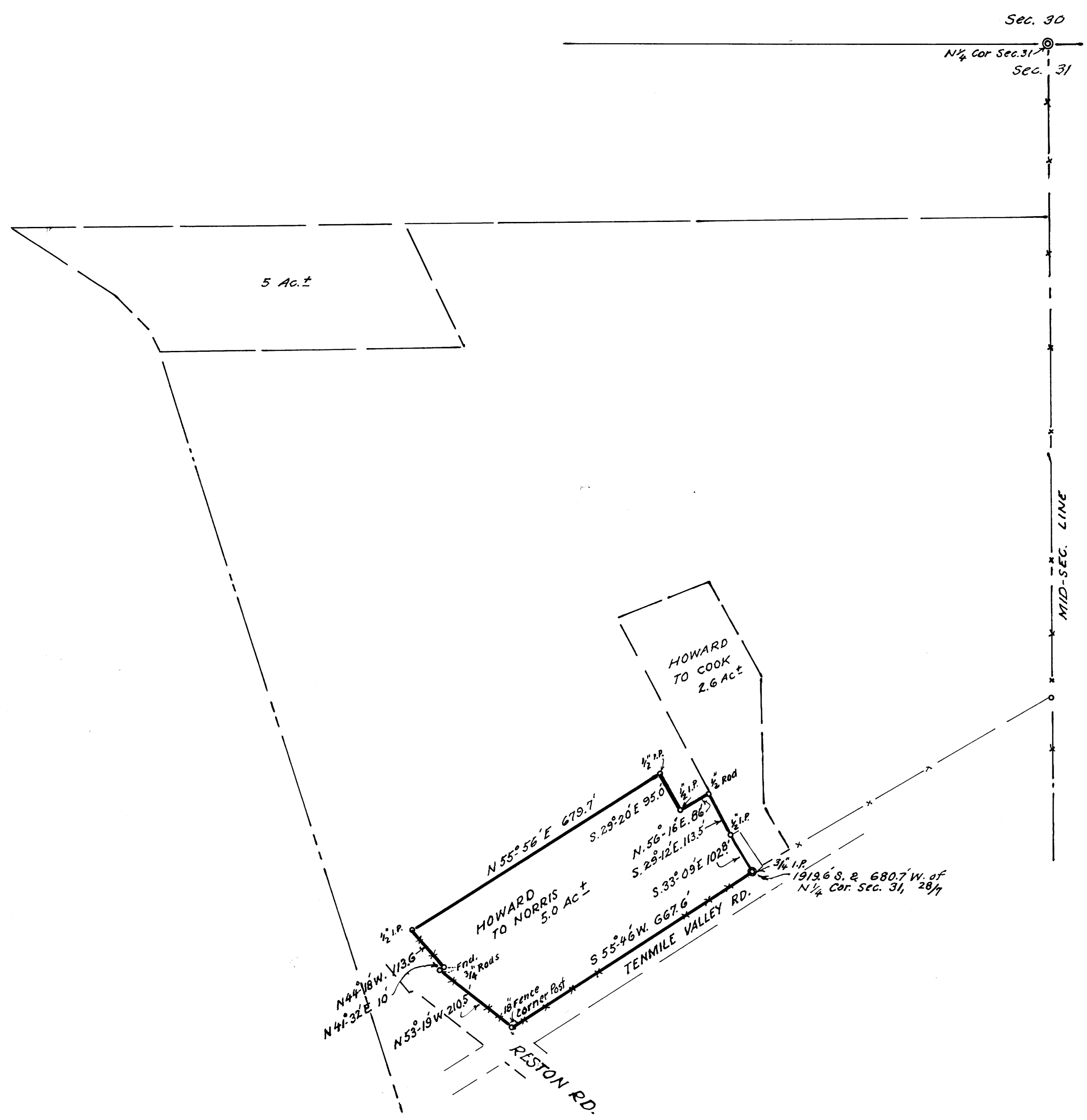


FILED
RECEIVED
FEB 13 1970
COUNTY SURVEYOR
DOUGLAS COUNTY, ORE.

M 39 - 8



RALPH & ALTA HOWARD
TO NORRIS
IN NW⁴ SEC. 31, T28S; R7W; W.M.
DOUGLAS COUNTY, ORE.
FEB. 1970 *AB* 1" = 200'

COUNTY SURVEYORS FILE DATA
DO NOT REMOVE FROM OFFICE

M 39 - 8