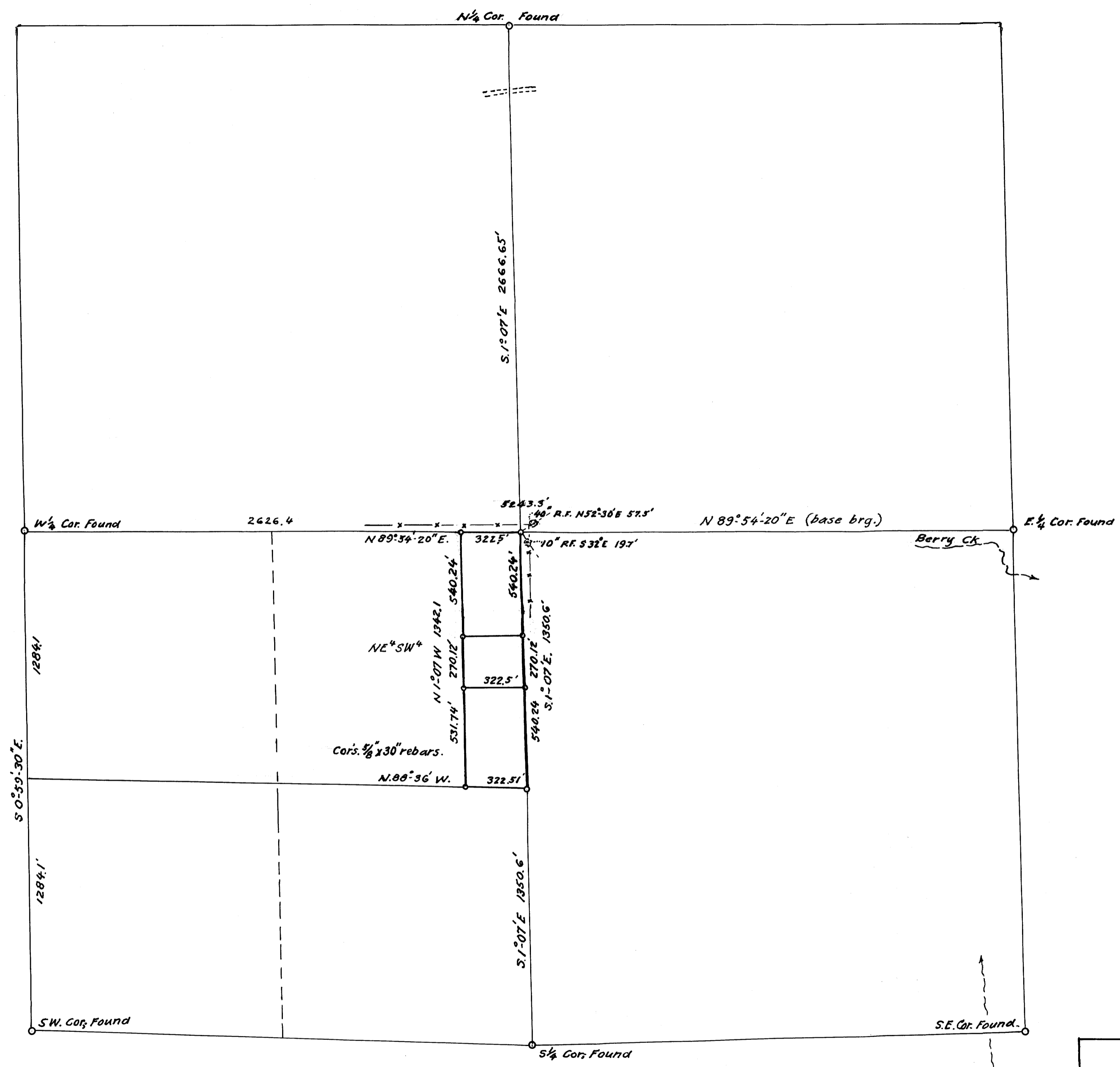


M 39-79A

FILED  
RECEIVED  
AUG 12 1970  
COUNTY SURVEYOR  
DOUGLAS COUNTY, OREGON



MRS A. W. KEARBY

EAST 10 AC. NE<sup>1</sup>/<sub>4</sub>SW<sup>1</sup>/<sub>4</sub> SEC. 13,  
T.29S; R.8W; WIL. MER.  
DOUGLAS COUNTY, OREGON.  
AUG. 1970 1" = 400 ft.

COUNTY SURVEYORS FILE DATA  
DO NOT REMOVE FROM OFFICE

(AMENDMENT  
OF M39-79)

M 39-79A